



**Western Cape
Government**

Health

DIGITAL PRESS CONFERENCE

Health Response Update

Dr K Cloete & Prof M Davies

3 December 2020

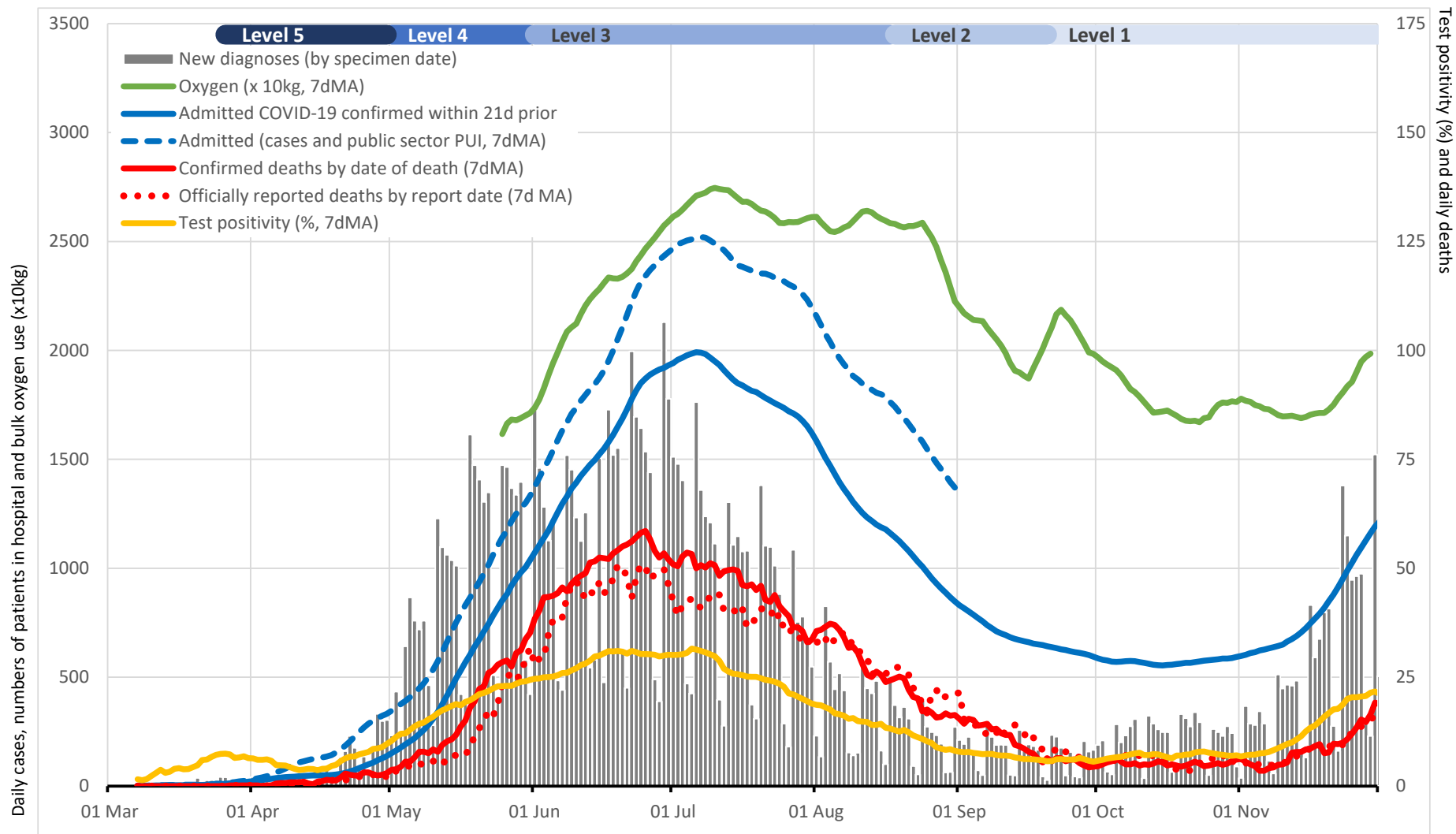
Overview

1. Surveillance Update – Provincial trends
2. Surveillance & Response Update – District trends
3. Surveillance & Response Update – Garden Route
4. Update on the Health System Recovery and 5-point COVID Resurgence Strategy
5. COVID-19 transmission & stopping spread
6. Conclusions

Surveillance Update – Provincial trends

Integrated testing, case, hospitalisation and mortality trends

(by event dates, until 30 November 2020)





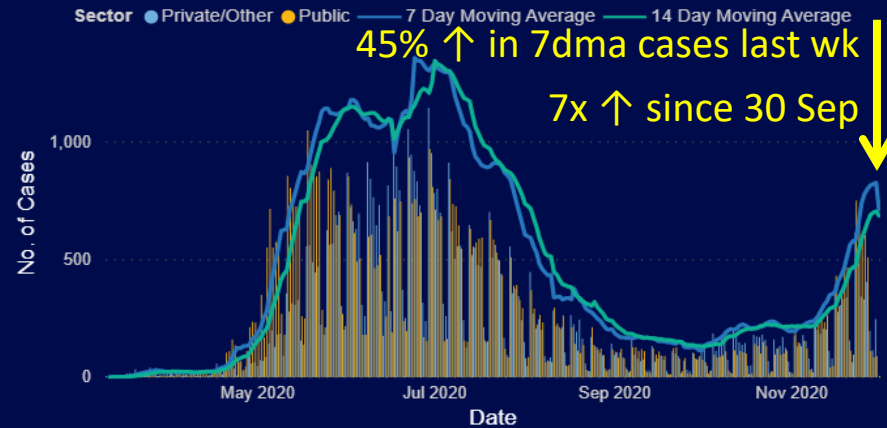
Provincial Resurgence Overview

Health Impact Assessment
WC Department of Health
Last Updated:
Wednesday, 2 December 2020

Select District, Subdistrict:

- ☐ Cape Winelands
- ☐ Central Karoo
- ☒ City of Cape Town
 - ☐ Eastern
 - ☐ Khayelitsha
 - ☐ Klipfontein
 - ☐ Mitchells Plain
 - ☐ Northern
 - ☐ Southern
 - ☐ Tygerberg
 - ☐ Western
- ☐ Garden Route
- ☐ Overberg
- ☒ West Coast

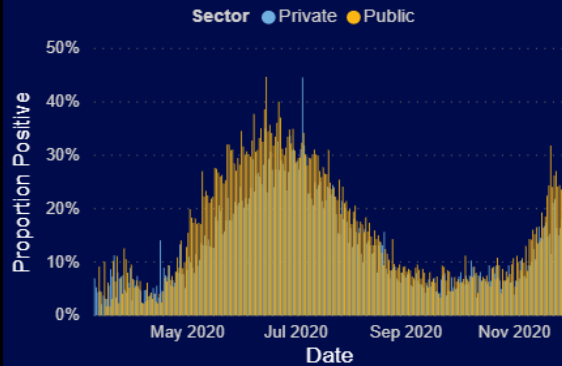
No. of Cases, 7 Day Moving Average and 14 Day Moving Average by Date and Sector



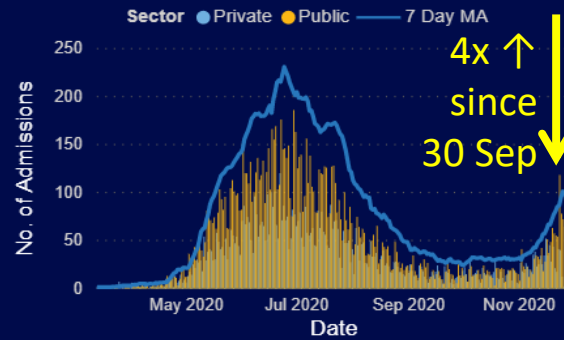
3/10/2020

12/2/2020

Proportion Positive by Date and Sector



No. of Admissions and 7 Day MA by Date and Sector



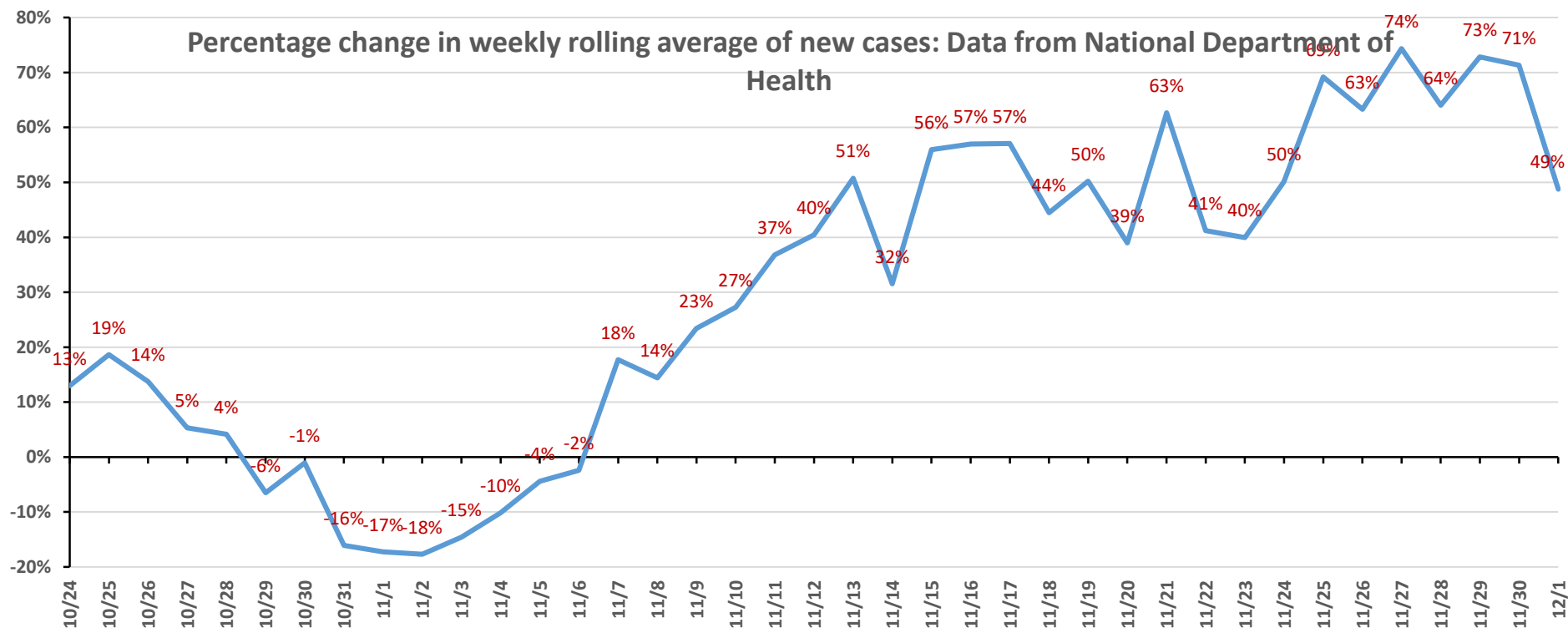
No. of Deaths and 7 Day MA by Date and Sector



Provincial Overview

- The Province as a whole continues to see a marked increase in cases.
- The % proportion positive continues to rise, and is now above 20% - up from 16% a week ago. Presently, we are matching levels previously seen on May 16 2020.
- Hospitalisations have continued to show an increase in the Garden Route and now in the Metro. We are also seeing an increase in deaths.

Growth in cases based on NDoH reported case numbers



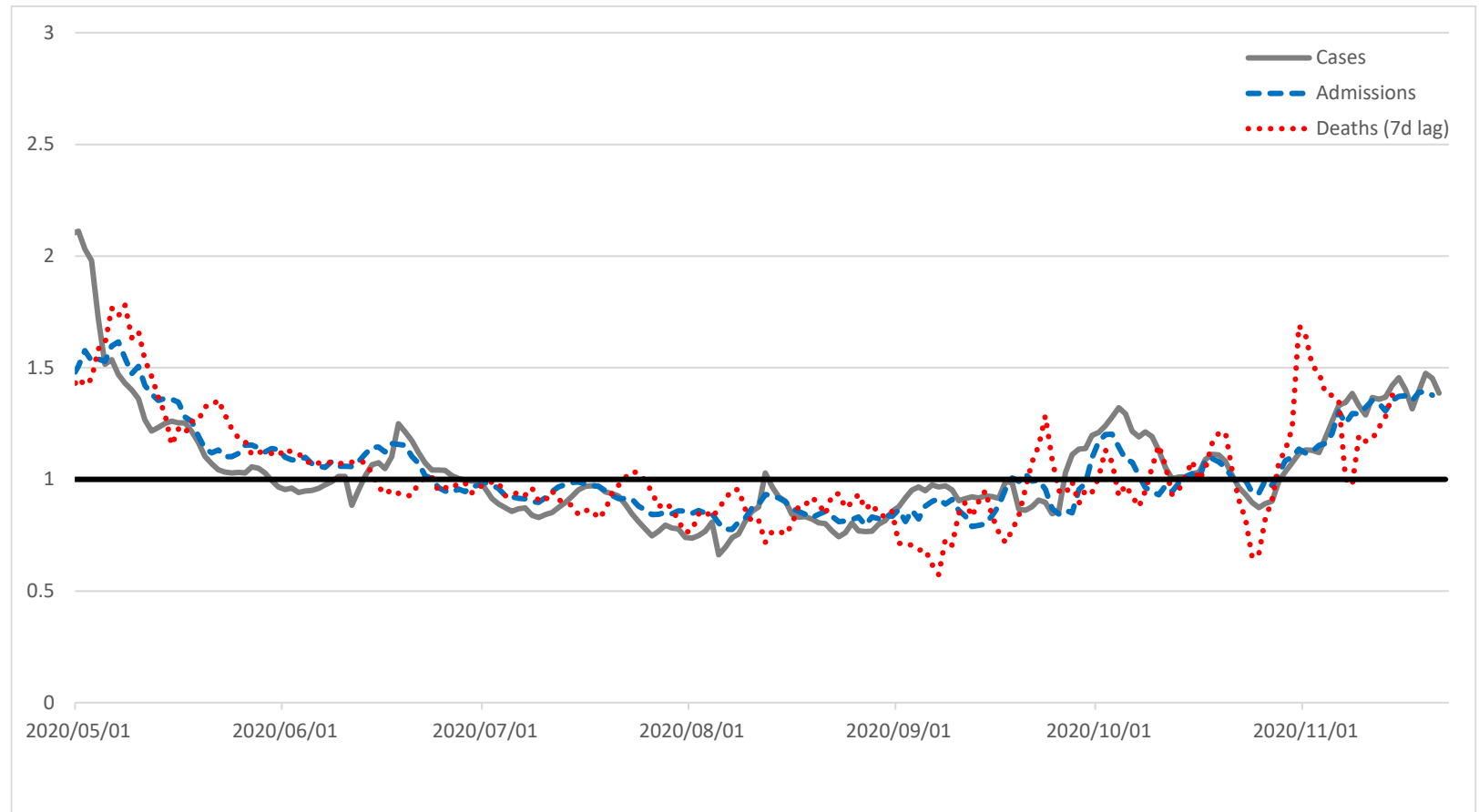
WC daily report- 25 November 2020: New COVID-19 cases in the last 7 days= 5322

WC daily report- 2 December 2020: New COVID-19 cases in the last 7 days= 7518

Percentage change = 41.3%

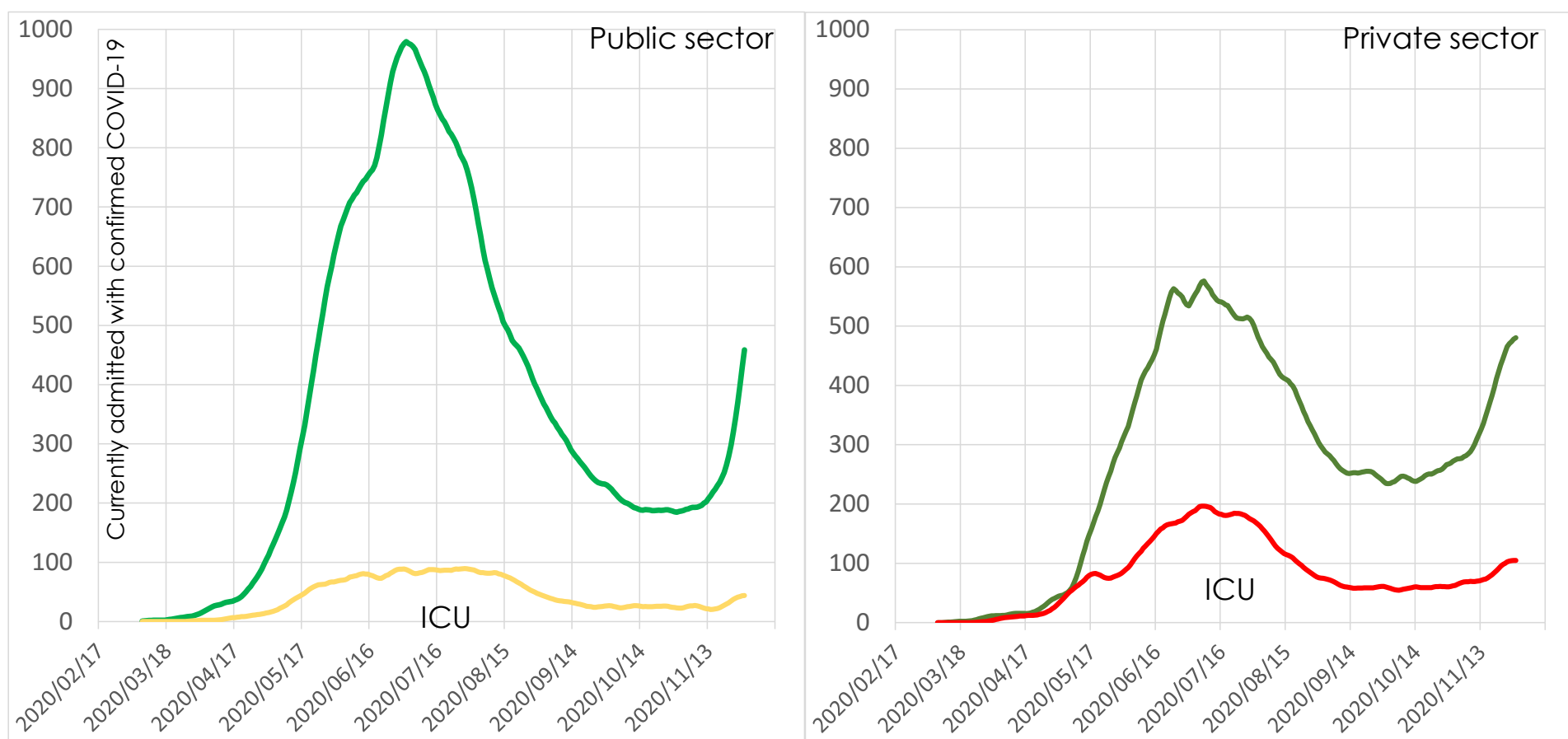
- Using NDOH data, we see that the percentage change in the weekly average of new cases is **49%**
- If we look at the Western Cape Data from the daily report, the percentage change in the weekly average of new cases is 41.3%
- The increase is still driven by the Garden Route, but in the last week, the Western Cape Metro, Central Karoo, Theewaterskloof and Cape Winelands have all shown increases in cases.

$R_t \approx 1.4$ based on cases or admissions



EpiEstim, 7d moving estimate

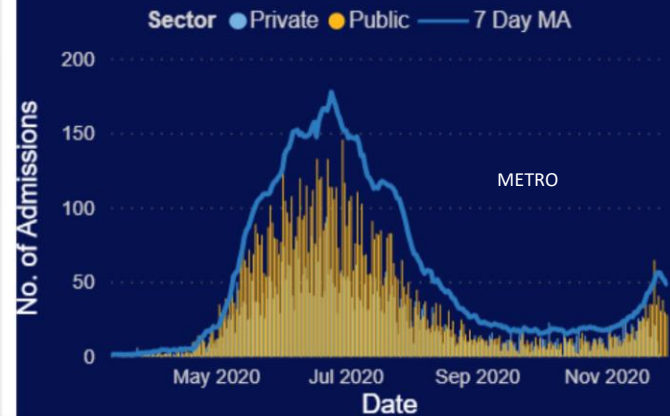
Hospitalisation



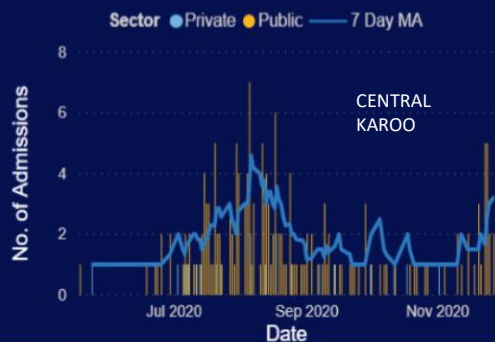
Lines are not stacked. PUIs excluded

Hospital Admissions By Health District

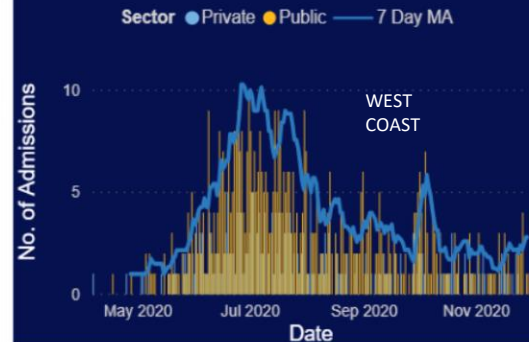
No. of Admissions and 7 Day MA by Date and Sector



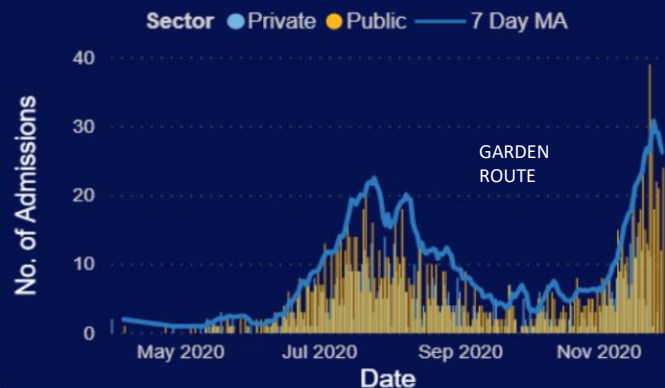
No. of Admissions and 7 Day MA by Date and Sector



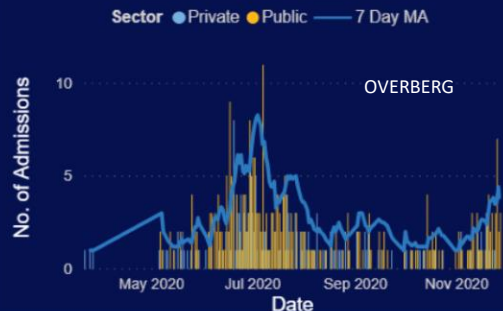
No. of Admissions and 7 Day MA by Date and Sector



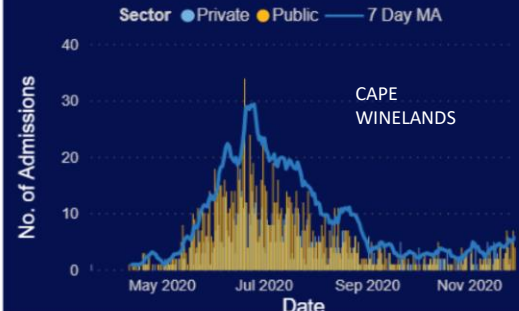
No. of Admissions and 7 Day MA by Date and Sector



No. of Admissions and 7 Day MA by Date and Sector

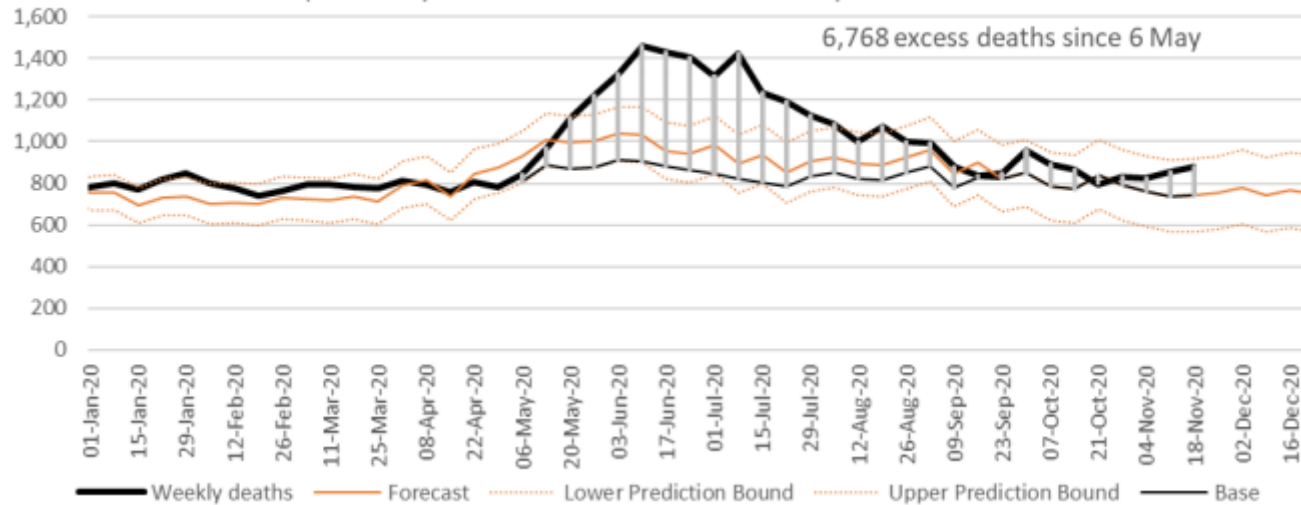


No. of Admissions and 7 Day MA by Date and Sector



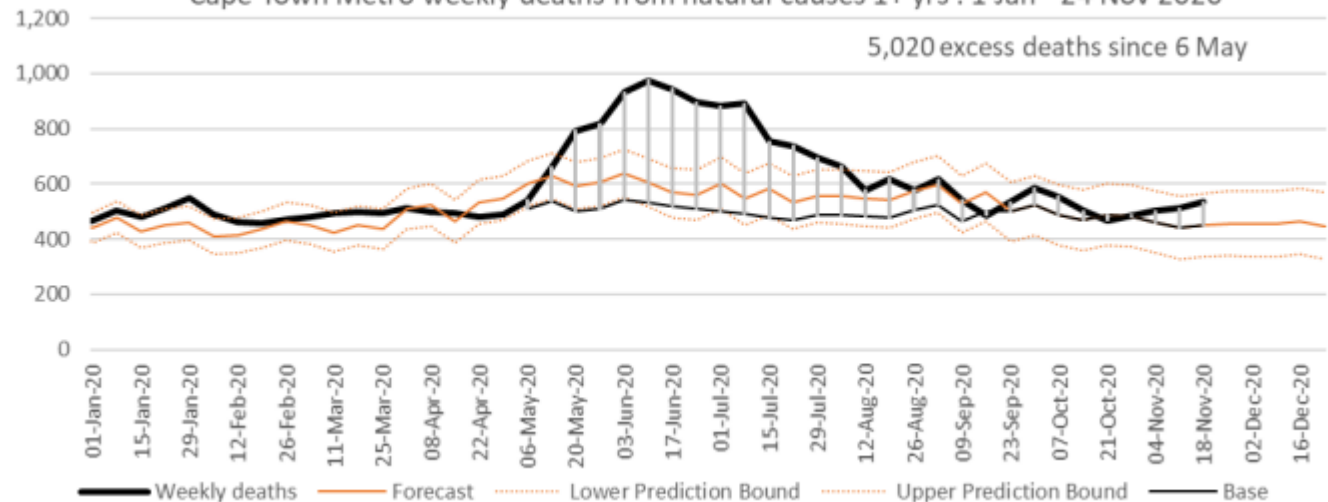
Excess mortality

Western Cape weekly deaths from natural causes 1+ years : 1 Jan - 24 Nov 2020



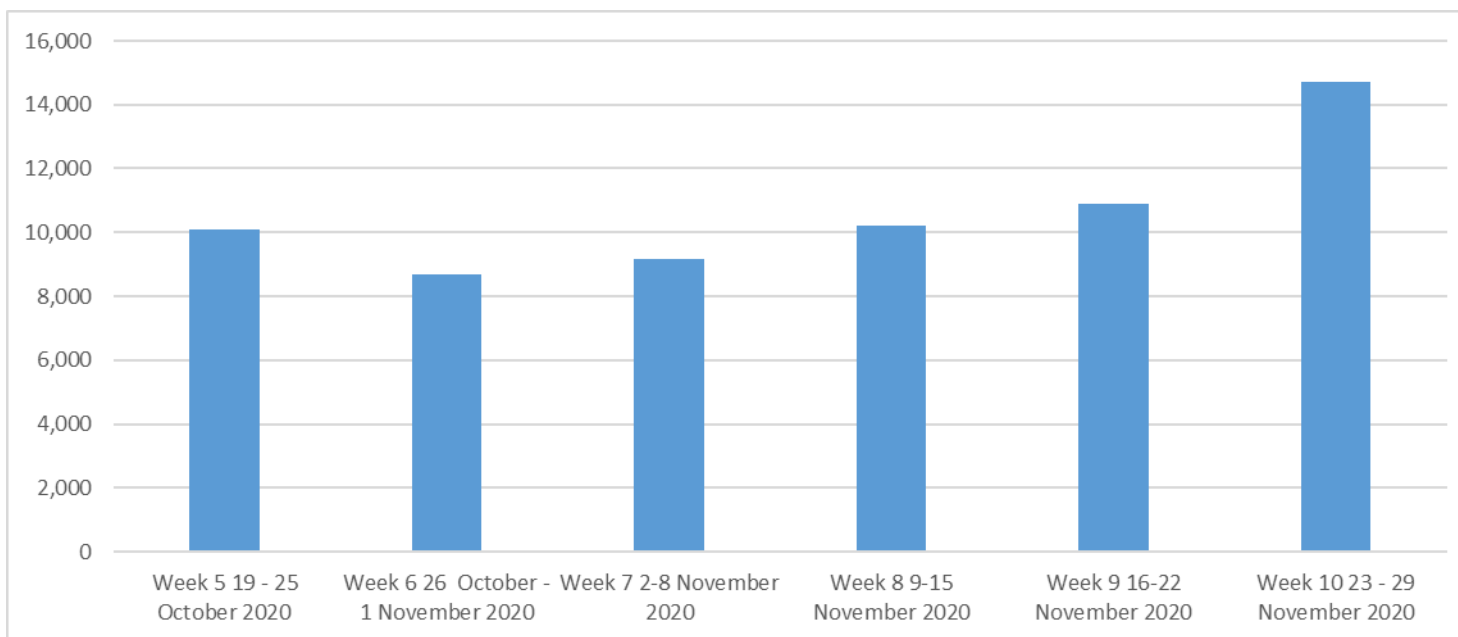
Excess deaths are still within prediction bounds, but trending upwards

Cape Town Metro weekly deaths from natural causes 1+ yrs : 1 Jan - 24 Nov 2020

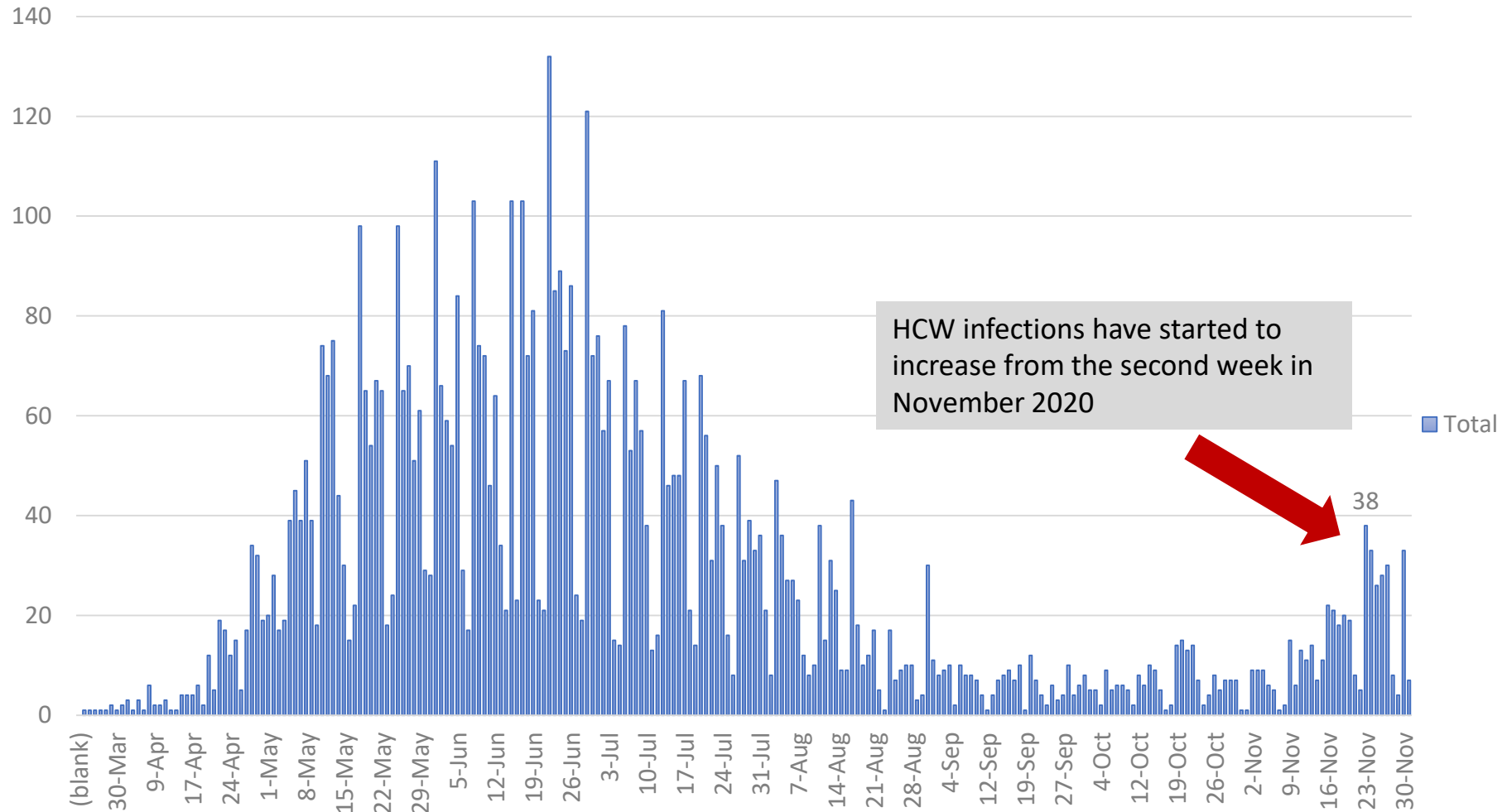


Total Number of Public Sector Tests Done

TOTAL NUMBER OF TESTS DONE	
Week	Total
Week 5 19 - 25 October 2020	10,081
Week 6 26 October - 1 November 2020	8,674
Week 7 2-8 November 2020	9,167
Week 8 9-15 November 2020	10,229
Week 9 16-22 November 2020	10,909
Week 10 23 - 29 November 2020	14,706
TOTAL	63,766



WCG: Health, Health Worker COVID-19 Infections



COVID-19 infections in HCW- 3 November 2020-3 December 2020

Healthcare Worker Resurgence Monitor

Health Impact Assessment
WC Department of Health
Last Updated:
Wednesday, 2 December 2020

11/2/2020

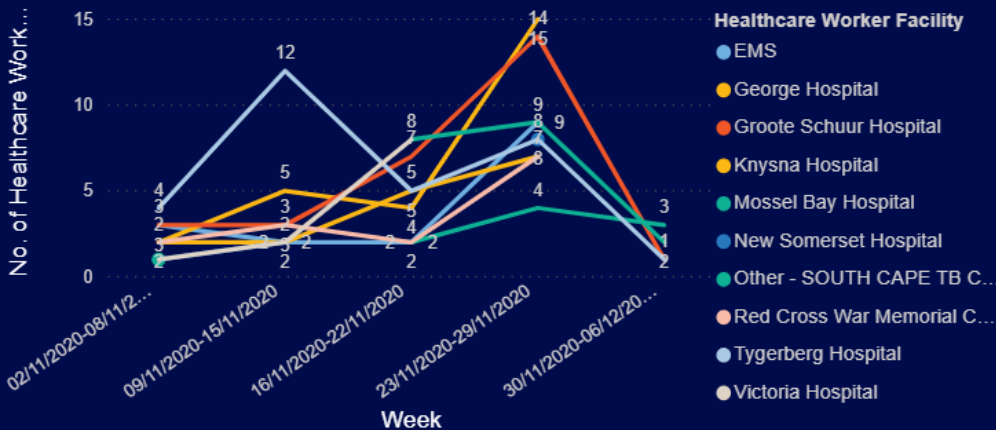
12/2/2020



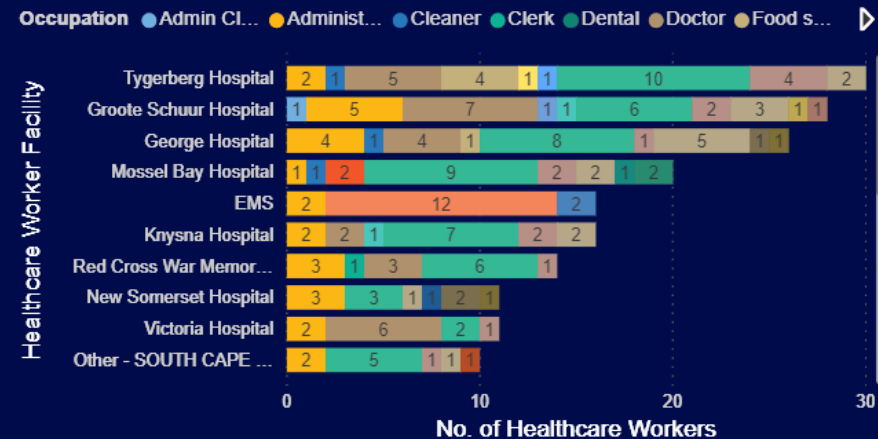
Top 20 Facilities with COVID-19 Healthcare Worker Cases by Week

Healthcare Worker Facility	02/11/2020-08/11/2020	09/11/2020-15/11/2020	16/11/2020-22/11/2020	23/11/2020-29/11/2020	30/11/2020-06/12/2020	Total
Tygerberg Hospital	4	12	5	8	1	30
Groote Schuur Hospital	3	3	7	14	1	28
George Hospital	2	5	4	15		26
Mossel Bay Hospital	1		8	9	2	20
EMS	3	2	2	9		16
Knysna Hospital	2	2	5	7		16
Red Cross War Memorial Children's Hospital	2	3	2	7		14
New Somerset Hospital	1	2		8		11
Victoria Hospital	1	2	8			11
Other - SOUTH CAPE TB CENTRE	1		2	4	3	10
Caledon Hospital			2	6		8
Total	21	42	66	114	11	254

Top 10 Facilities with COVID-19 Healthcare Worker Cases by Week



Top 20 Facilities with COVID-19 HCW Cases by Occupation



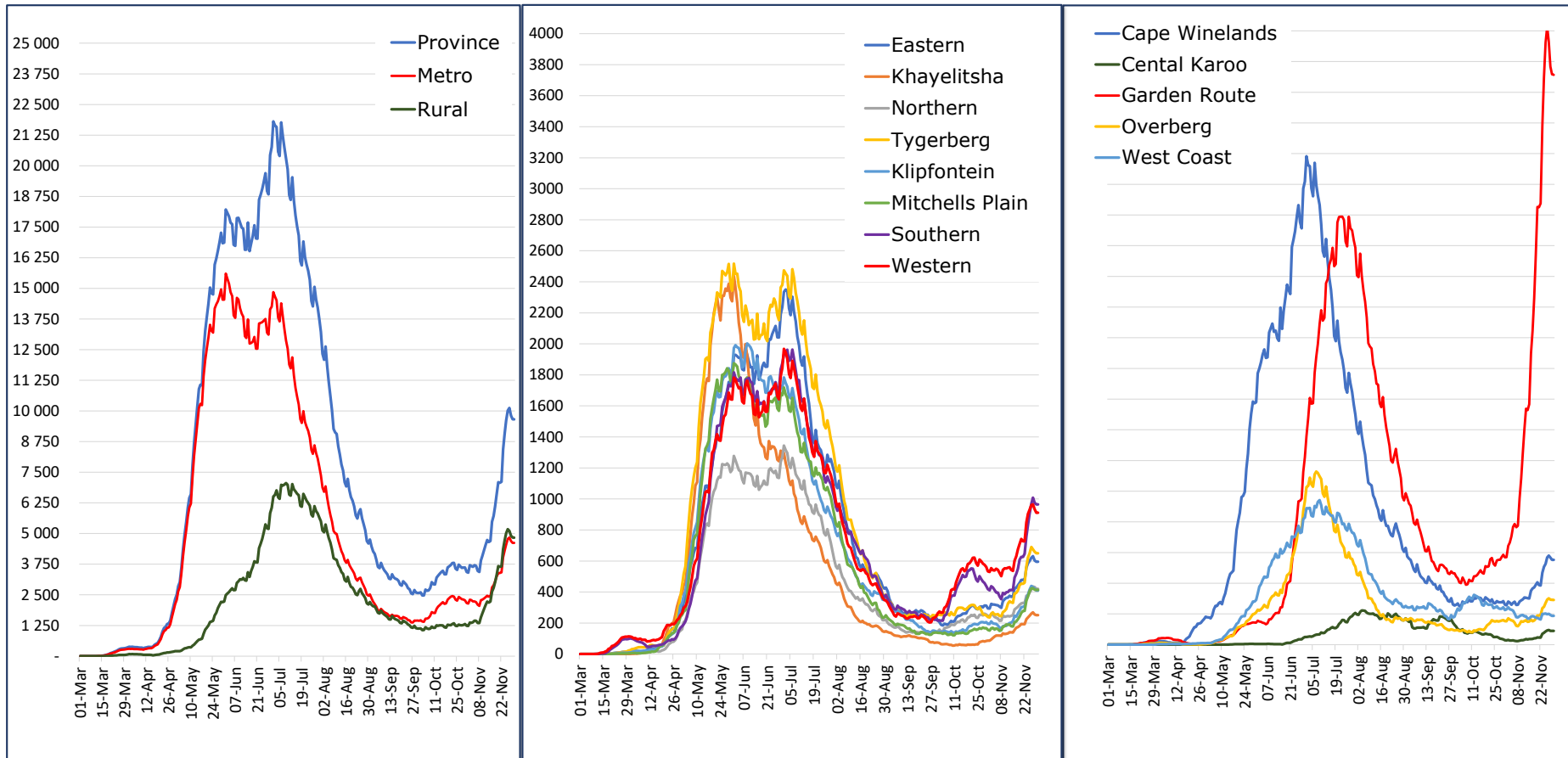
This graphic shows the health facilities with the highest CoVID-19 infections from 2 November to 2 December 2020

Cases have increased faster over the last 2 weeks

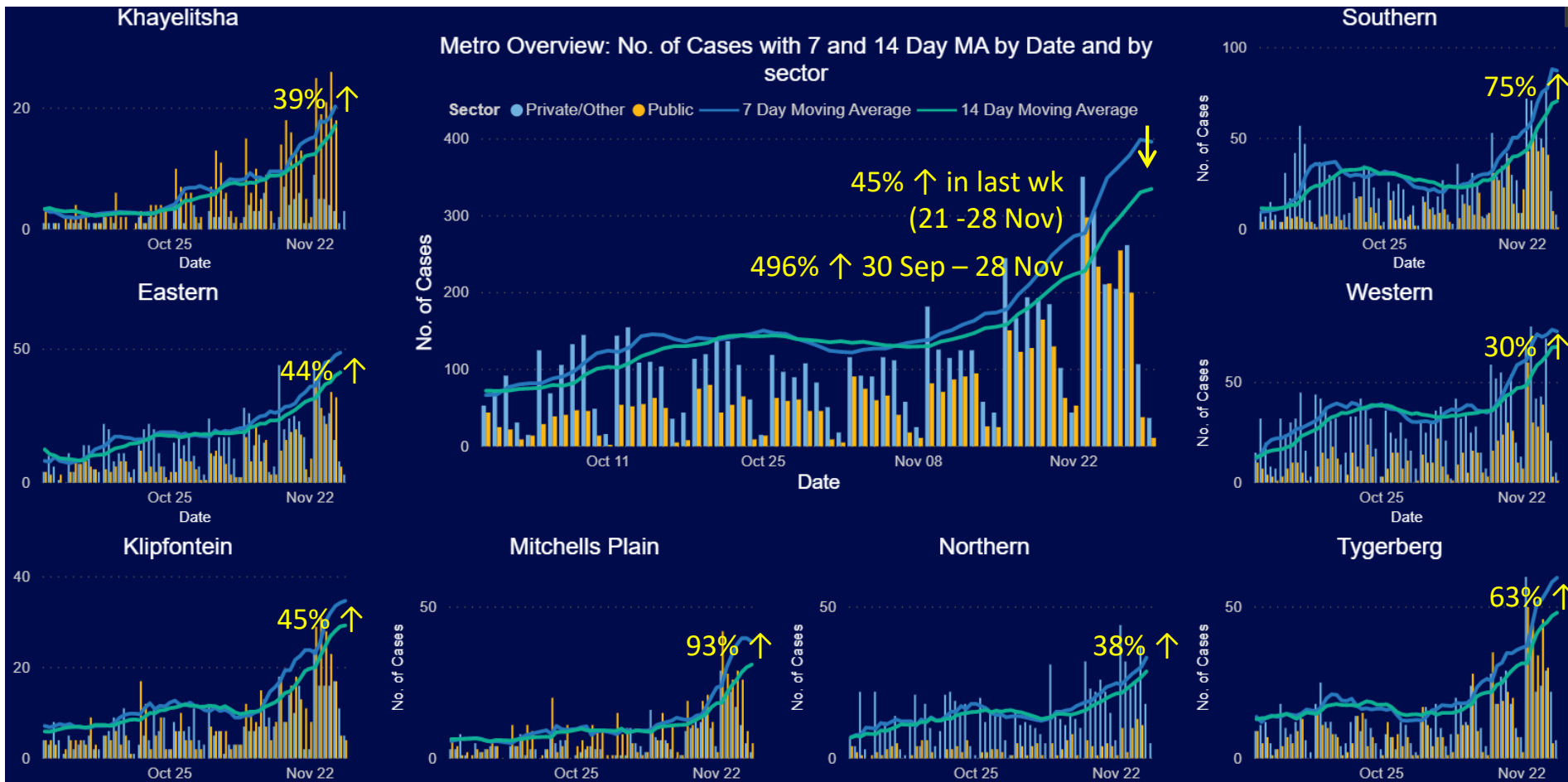
The high number of health worker infections in Garden Route hospitals reflects the high infection rate in the area.

Surveillance & Response Update – District trends

Active cases by subdistrict

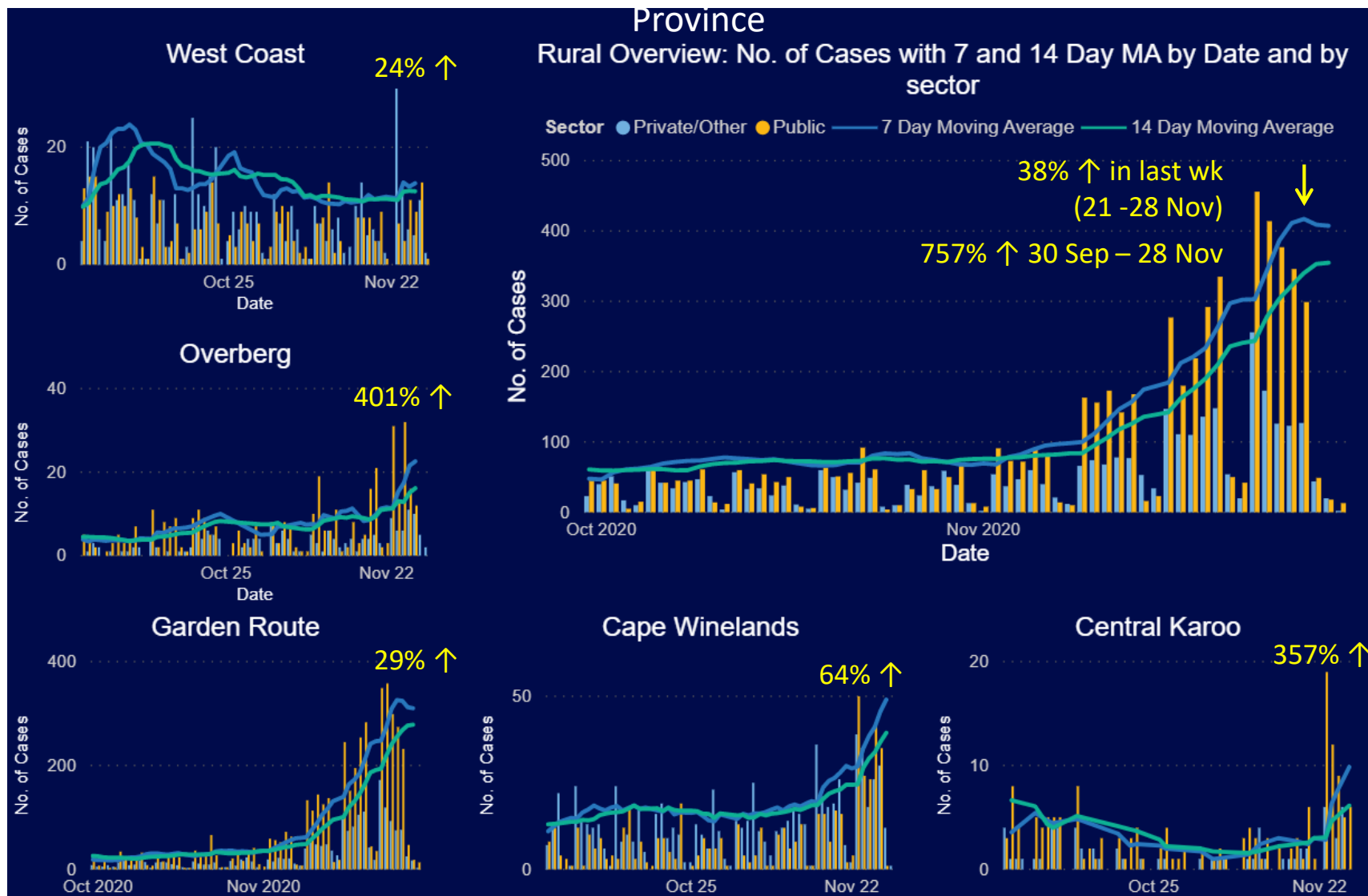


Growth in cases: Metro



% increases in last week shown in yellow for each subdistrict and Metro as a whole
 % increase since end of September also shown for Metro

Growth in cases: Rural Districts



% increases in last week shown in yellow for each Rural district and Rural overall
% increase since end of September also shown for Rural overall

2 December
2020

Surveillance Huddle Report



1 December 2020:

Surveillance Huddle

1. Central Karoo: staff at Beaufort West Hospital affected, unfortunately 1 deceased.
2. Overberg: Community transmission in Theewaterskloof, mainly household clusters. There was a toy run in Overstrand with minimal social distancing and mask wearing - remain vigilant. Aware of a holiday home swap that occurs between Hermanus & Eastern Cape - noted as a major concern.
3. Garden Route: widespread community transmission; Staff affected in various subdistricts/facilities. NHLS mobile units working well although still need to resolve PCR test following negative antigen test - meeting with virologists was scheduled for today. Interns appointed to assist with contact tracing - will be based at the Garden Route district office
4. Cape Winelands: Community spread in Bella Vista, Witzenberg. Various workplaces affected - Ceres Fruit growers, Ceres fruit juices, Bella Fruita Pakstoor. Communicating with all workplaces and EHOP visited Pakstore to monitor the situation and provide support. Community outreach via loudhailers, CBS. Community spread across all subdistricts; use of loud hailing x2/week in Langeberg with EHP monitoring compliance. In Drakenstein increased community awareness supported by CBS/NGOs as well as SAPS, law enforcement. Targeting work transport (fully loaded bakkies; farm trucks) to adhere to mask wearing, sanitizing. CBS conducting screening and referral for COVID-19 testing.
5. Metro
 1. KMPSS: noted increase in numbers, nothing specific to report
 2. SWSS: Cases largely testing in the private sector. Managing some workplace clusters.
 3. NTSS: community transmission. cases "forget" if they attended functions when questioned
 4. KESS: School with positive cases. Debbie Haines and school nurse are attending to this. World AIDS day event in Khayelitsha today noted in chat (~ 500 youth in attendance)!

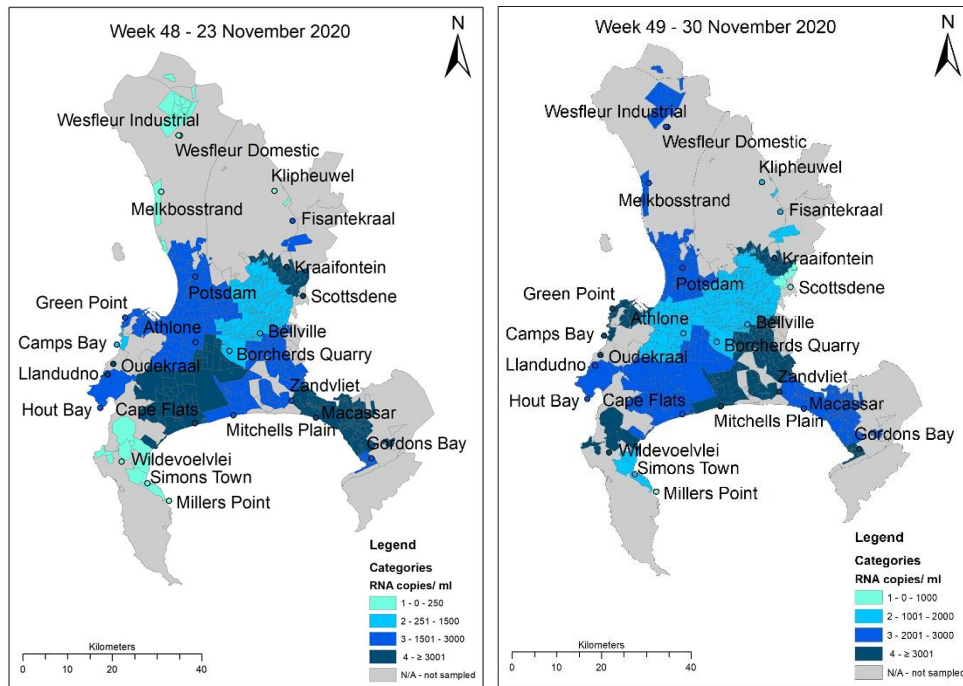
Additional points:

1. Communications provided feedback: balance out the bad news with some good news. Messaging updated to reflect airborne transmission/droplet spread and the importance of social distancing etc. Planned digital communications including social media, messages to communities via physical media, local radio stations etc. too. *"In the air, not just on your hands."*

SAMRC COVID- 19 AND WASTEWATER EARLY WARNING SYSTEM

WEEK 48
update

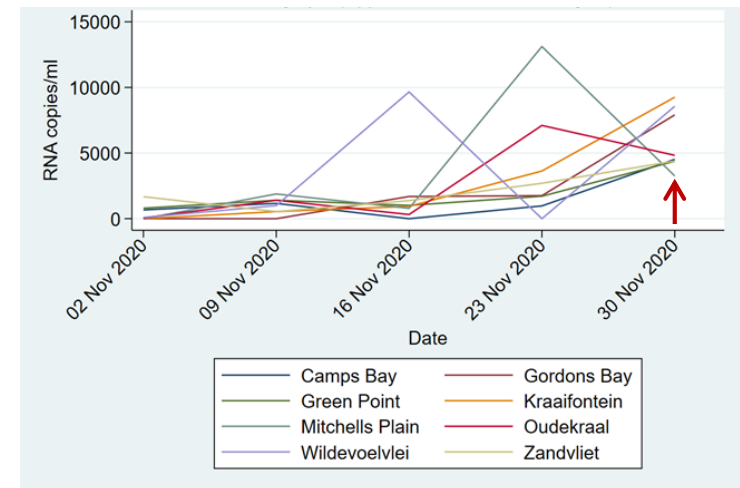
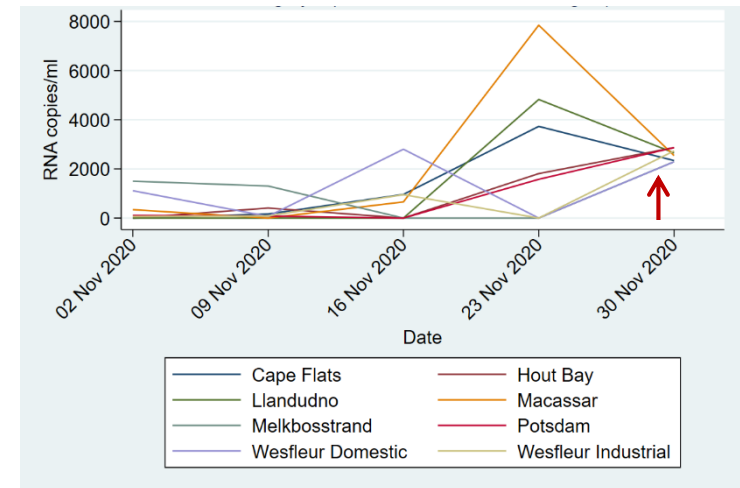
City of Cape Town – 24 wastewater treatment plants



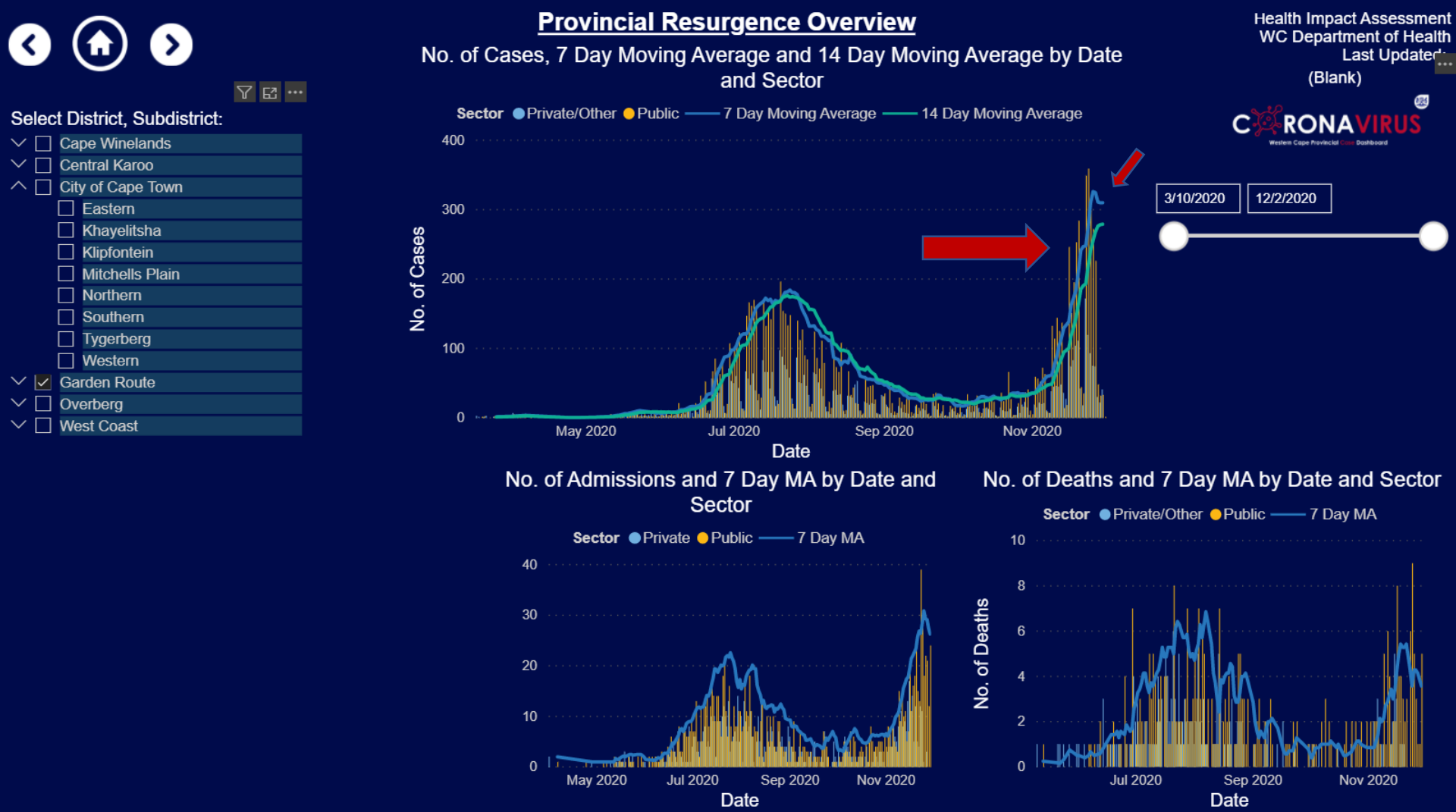
24% ↑ in average SARS-CoV-2 RNA across Metro

Largest increases in:

Camps Bay
Gordons Bay
Green Point
Kraaifontein
Wildevoelvie



Surveillance & Response Update – Garden Route



The Garden Route shows a marked increase with the second peak exceeding the first peak.

The high case load was followed by high hospitalisations both in the private and public sector.

The seven day moving average for the first time is turning towards the 14 day moving average - It is too early to be optimistic, but we will watch this space.

Garden Route 30 November 2020 : New daily cases

Hessequa – 0

Mossel Bay-
40

George – 65

Knysna/Bitou
– 85

Kannaland –
2

Oudtshoorn -
5

Garden Route: Containment Strategy

- Surveillance using available data and on the ground knowledge. Daily district surveillance huddles.
- Intensified screening, testing and contact tracing as well as outbreak cluster management.
- Communication campaign using social media to encourage positive behaviour
- Increasing hospital capacity.
- Start COVID-19 Antigen testing.
- Multisectoral response including health, local government, law enforcement, education, private sector etc.
- Training of additional staff for contact tracing

2 December 2020

Surveillance Huddle Report- P1

Garden Route

Garden Route Districts Daily Huddle

2 Dec 2020

1. Sincere condolences to Central Karoo team for loss of a staff member to Covid
2. 5-point resurgence strategy received from Dr Cloete noted

Hessequa

1. New cases: 0
2. Tests done: 0
3. Pending: 38
4. Lab TAT: Good
5. Riversdale Hospital: 1; one PUI death
6. Staff situation: one in quarantine

Mossel Bay

1. New cases: 40 (NHLS 18 Pvt 22)
2. Areas: Asla and Kwanonqaba remain the focus; main age group 30-39 yrs. and then 40-49 yrs.
3. Tests done: 211
4. Pending: 358
5. Active cases: 656
6. Lab TAT: 24-48 hours
7. Mossel Bay Hosp: 11
8. Private Hosp: 32
9. One death
10. Some hiccoughs with district office support for contact tracing; to ensure necessary communication between role players; system is in development
11. Staff situation: pos 19 and 5 in quarantine

George

1. New cases: 65
2. Distribution remains the same; last 3 days highest numbers in descending order: Pacaltsdorp, Thembaletu, Conville and Rosemore
Of note is that in last 3 days the proportion of private shows an increase: now 32%
3. Tests done: 265 (this is a huge number for the team; some had to be deferred, particularly at Pacaltsdorp Clinic)
4. Lab TAT: 24-48 hrs
5. George Hosp: 63
6. Private Hosp: 33
7. Harry Comay Hosp: 24
8. Uniondale: 1
9. 3 deaths from yesterday
10. NHLS mobile unit:
 - Some concern that if we have to test all the negative results, that is going to defeat the purpose and create additional logistical considerations

2 December 2020

Surveillance Huddle

Report- P2

Garden Route

- Results not showing on dashboard; need to follow up urgently -Dr M

11. Staff situation: pos 19 and many in quarantine

George Hospital

1. 8 more staff tested positive, now 38 active cases
2. Patients: 63
3. Ethics committee active

Knysna/Bitou

1. New cases: 85
Clusters: Sedgemere old-age home: 5 staff pos; visiting there today
Epilepsy SA residential home: first resident tested pos
DB Childrens Home: comprehensive plan in place to manage situation and under control presently
2. Tests done: 285
3. Pending: 364
4. Active cases: Knysna 395 and Bitou 240
5. Lab TAT: 24-48 hrs
6. Knysna Hosp: 43
7. Private Hosp: filled to capacity except for one available bed; under tremendous pressure
8. Of concern is Dr XX of Bitou positive with 2 assistants now in quarantine
9. 3 deaths
10. Staff situation: Pos 10 and 9 in quarantine
11. NHLS mobile unit: also concern re need to have to do further PCR test for negative patients; await final decision

Kannaland

1. New cases: 2
2. Tests done: 16
3. Pending: 40
4. Active cases: 20 (of which 16 are in Ladismith)
5. Lab TAT: 48 hrs – slightly longer than usual; to watch carefully
6. Contact tracing: struggling with inaccurate addresses and asking individual clinics to assist
7. JOC started functioning again after a period of inactivity
8. Staff situation: 5 in quarantine

Oudtshoorn

1. New cases: 5
2. Tests done: 72
3. Pending: 70
4. Active cases: 217; distribution is random and widespread
5. Oudtshoorn Hosp:
6. Private Hosp:

Concluding remarks

- The Garden Route is experiencing an established resurgence
- The outbreak is present in all sub-districts, Previously, the numbers were low in Kannaland and Oudtshoorn, but this has since changed with increasing case numbers in Oudtshoorn.
- The outbreak is leading to higher admissions for the private and public sector causing increased pressure on hospital services.

Update on the Health System Recovery and 5-point Resurgence strategy



Resurgence, Health System Recovery and Reset Strategy

1. Continue to be vigilant and manage COVID-19, with agility:

- a) Change **community behaviours** to **prevent infections**
- b) Surveillance and **outbreak response** to **contain the spread**
- c) Scale up **health platform capacity** to **manage COVID disease**
- d) Maintain **comprehensive health services** to provide **essential non-COVID services**
- e) Safeguard and **protect the well-being of health care workers**

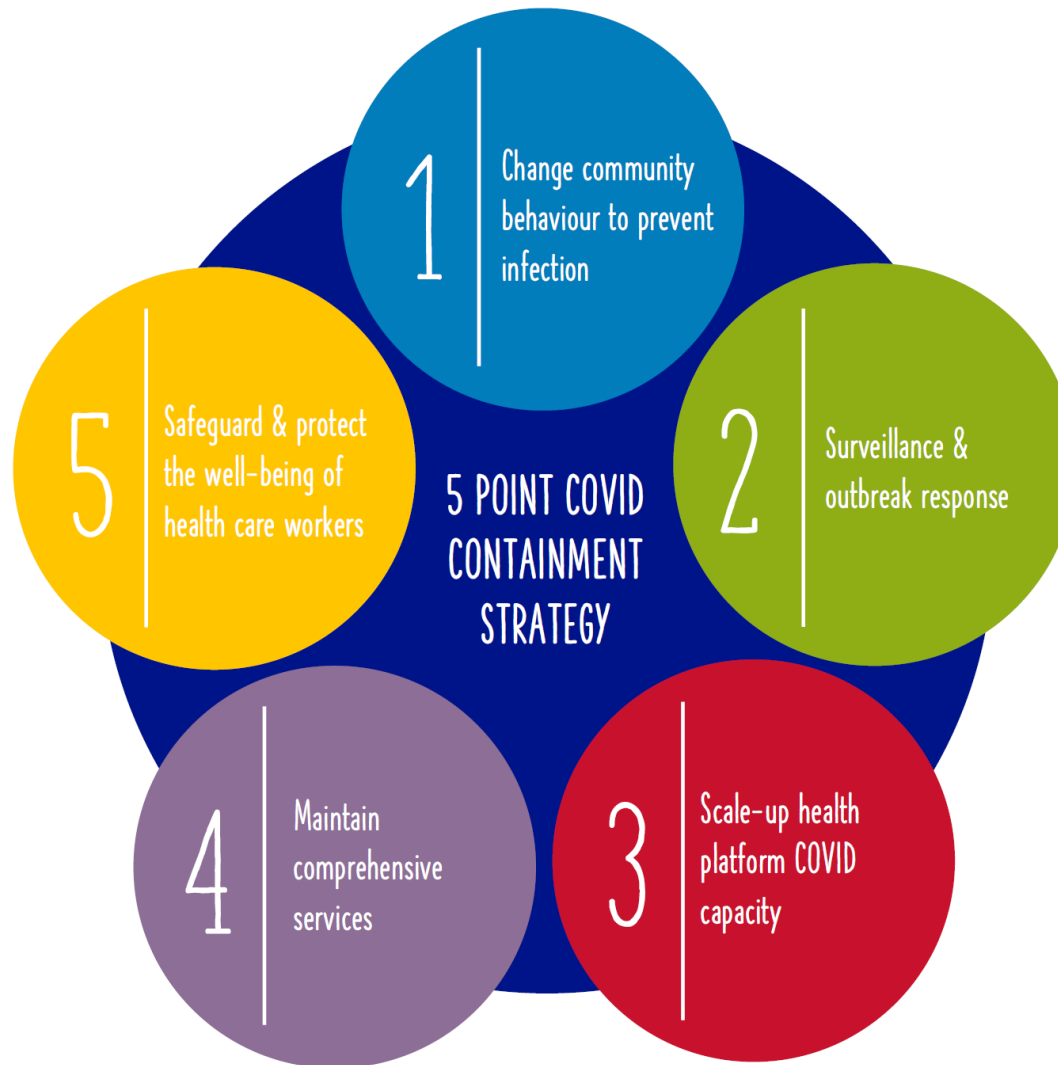
2. Re-introduce comprehensive health services, in a different way:

- a) Prioritise the **most essential and highest impact services**
- b) Re-design how we **render these essential activities**, within a **COVID reality**
- c) Align with the **WCG recovery strategy** for **safety, well-being** and **jobs**

3. Strengthen our organisational capacity towards Universal Health Coverage (UHC):

- a) Intentional **learning** and introducing an **evidence-informed, data-led** approach
- b) Move towards **key system levers for UHC**, e.g. service design, strategic purchasing, etc.
- c) Adaptive **governance and leadership** for **resilience**, with **focus on our people**

5-point COVID Containment Strategy



5-point COVID Containment Strategy

1. Change community behaviours to prevent infections:

- a) Need **strong and bold central public messaging** and **targeted local messaging**
- b) Co-ordinated **Provincial, District and local JOC enforcement**, lead by Law Enforcement and EHPs

2. Surveillance and outbreak response:

- a) The **surveillance** and **outbreak containment strategy** is being implemented
- b) The **daily huddles** are functioning well to contain local outbreaks

3. Scale up health platform COVID capacity:

- a) Local teams putting **contingency plans** in place in **each geographic area**
- b) Defined **trigger points** for **step-wise escalation** of **inter-mediate, acute** and **critical care** access

4. Maintain comprehensive services:

- a) Ensure a **core quantum of essential services** be maintained, while scaling up COVID capacity
- b) Plan and **carefully reduce comprehensive services** to allow for COVID capacity

5. Safe-guard and protect well-being of health care workers:

- a) Ensure **sufficient PPE** to protect all front-line staff members
- b) Implement **OHS policy fully**, including addressing **mental well-being** for staff

Acute service platform – general comments

1. Currently **1253 Covid patients** in our acute hospitals (**680** in **public** hospitals & **573** in **private** hospitals)
2. COVID **hospitalisations** have **begun increasing sharply** whilst we are experiencing **trauma, surgical, psychiatric** and **neonatal pressures**.
3. The metro hospitals are running at an average **occupancy rate of 79%** whilst **rural hospitals** are running at an average **occupancy rate of 79%**.
4. **COVID & PUI cases** make up **9%** of hospital admissions in the **metro** and **15% of hospital admissions in the rural areas** (both increasing daily).
5. The **Hospital of Hope** (Brackengate) currently has **102** patients (1008 cumulative admissions), and **Sonstraal** currently has **4 COVID patients** (and 21 TB patients).
6. The **oxygen utilisation** remains stable (**40%** of available capacity) and the mass fatality centre has admitted 437 bodies to date (currently 6).

METROPOLE ACUTE CARE AVAILABILITY & UTILISATION

	Operational Beds	Filled Beds	Available Beds	BUR %
TBH - Tygerberg Hospital	1,227	956	271	78%
GSH - Groote Schuur Hospital	825	593	232	72%
RXH - Red Cross War Memorial Children's Hospital	195	161	34	83%
NSH - New Somerset Hospital	330	257	73	78%
ERH - Eerste River Hospital	185	143	42	77%
FBH - False Bay Hospital	76	52	24	68%
HHH - Helderberg Hospital	196	146	50	74%
KHA - Khayelitsha Hospital	341	326	15	96%
KBH - Karl Bremer Hospital	360	285	75	79%
MPH - Mitchells Plain Hospital	426	361	65	85%
VHW - Victoria Hospital	210	186	24	89%
WFH - Wesfleur Hospital	58	31	27	53%
Totals	4,429	3,497	932	79%

Operational Beds = Beds that are Equipped and Staffed

Bed Utilisation Rate = % Operational Beds Occupied

OCCUPANCY IN METRO ACUTE CARE PLATFORM IS 79%; 7% COVID CASES

What do we know about COVID-19 spread – what can we do?



Coronavirus is in the AIR !

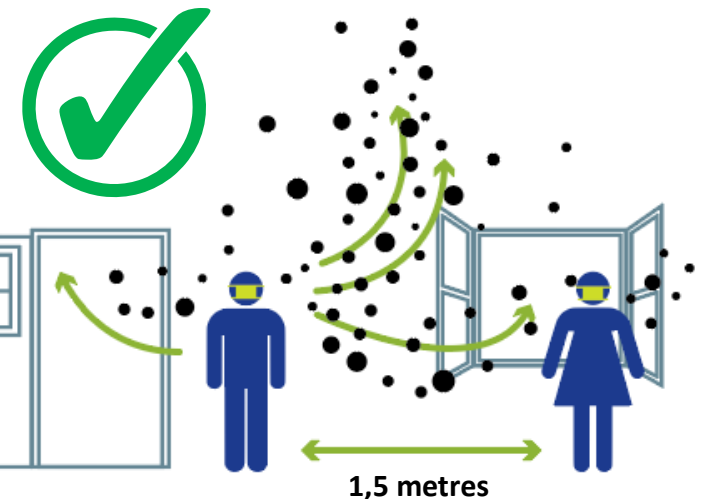
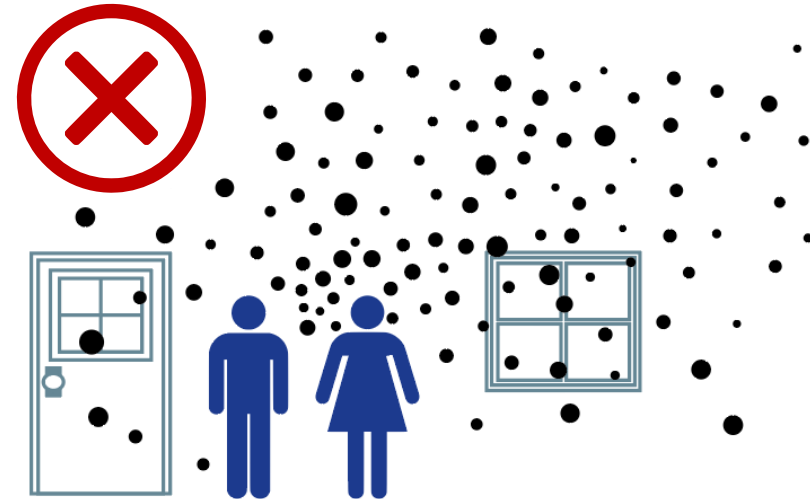
Previously we thought ...

Hands and surfaces important in spread.

Now we know ...

Air droplets cause most COVID-19 spread.

We are breathing in small droplets containing virus.



The virus can spread from an infected person's mouth or nose in small liquid particles when the person coughs, sneezes, sings, breathes heavily or talks.

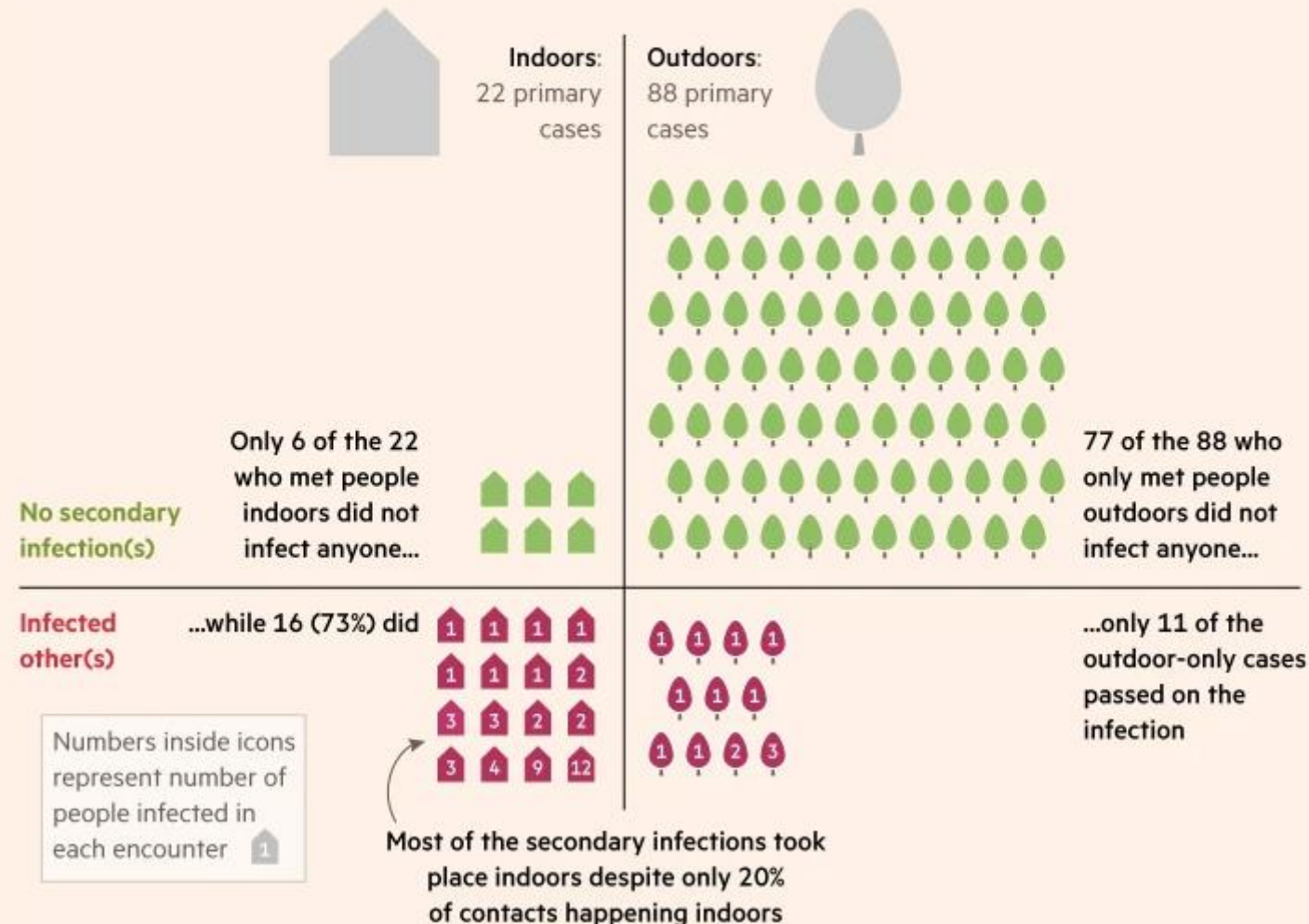
Interim guidance 1 Dec 2020

What can we do...

- Be careful about sharing your "air space"
- Keep your distance
- Ensure good ventilation
- Wear a mask

Studies suggest Covid-19 transmission is much less likely in outdoor spaces than indoor settings

Researchers traced the contacts of 110 people with Covid-19, and recorded when the virus was passed on to a contact, split by whether or not the primary case had met people indoors



Transmission ~18 x more likely in indoor settings

Coronavirus spreads where people GATHER

Previously...

Gatherings of people were limited by lockdown which flattened the Wave 1 curve.

Now we know ...

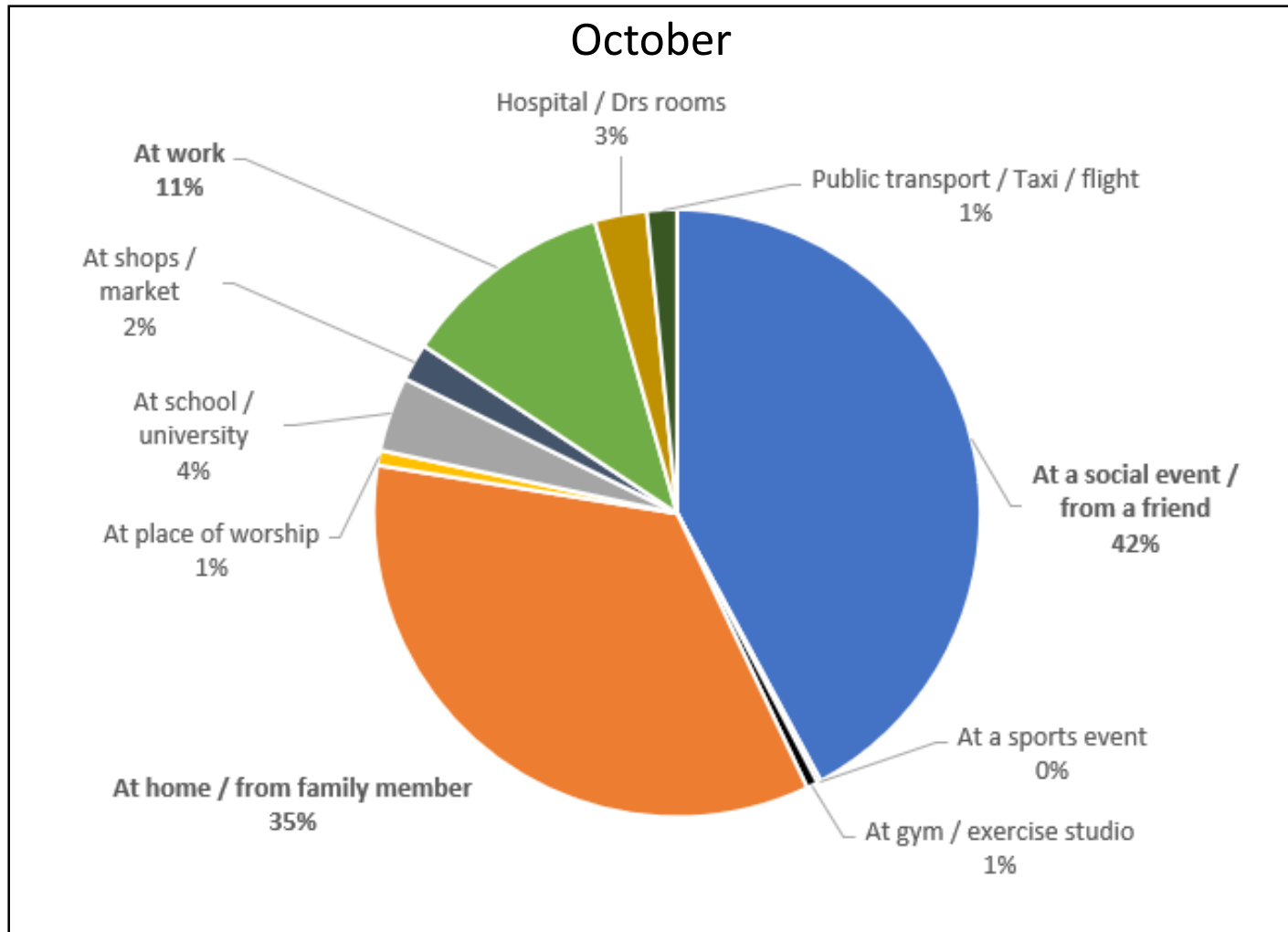
Social gatherings can contribute substantially to spread

What can we do...

- Avoid gatherings
- Limit size (more people = more risk)
- Keep them short (longer = more risk)
- Go outdoors (indoor = more risk)
- Practise distancing, ventilation, mask wearing and respiratory hygiene at work.



Possible locations of infection in Southern Western



Coronavirus spreads early

Previously we thought ...

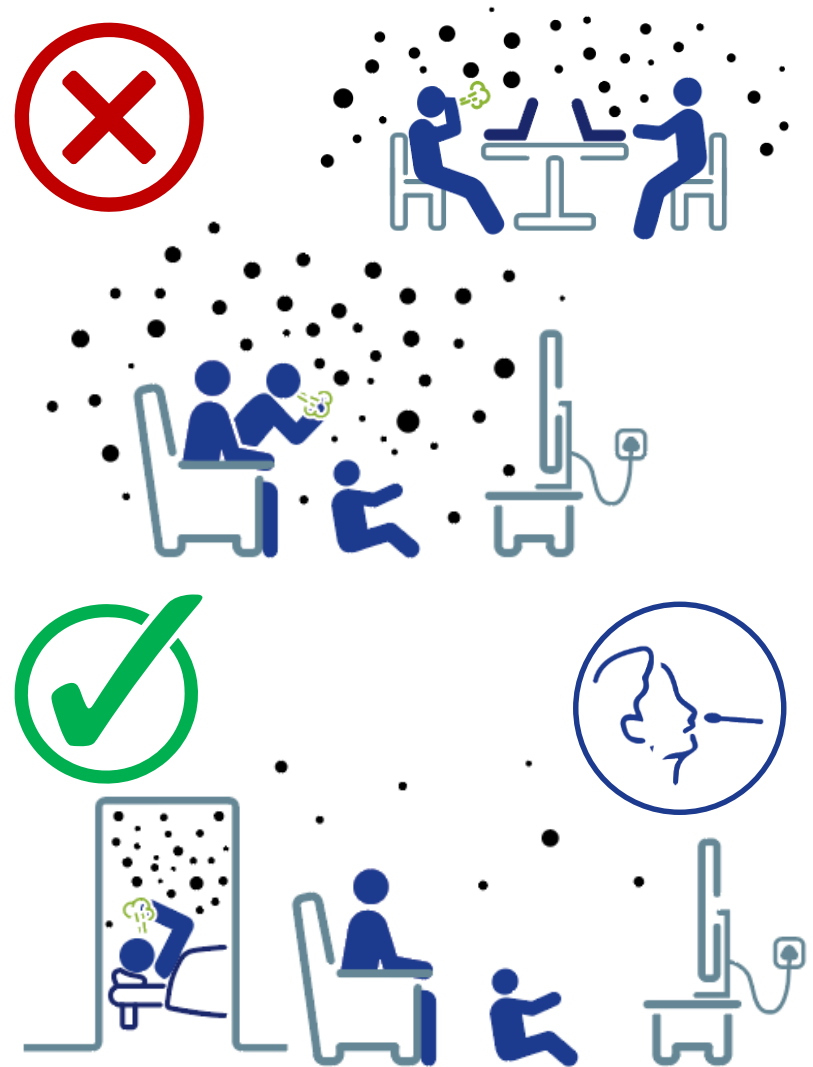
Sometime between 2 days before and up to 14 days after symptoms start.

Now we know ...

Most transmission occurring in first 2 days of infection.

What can we do...

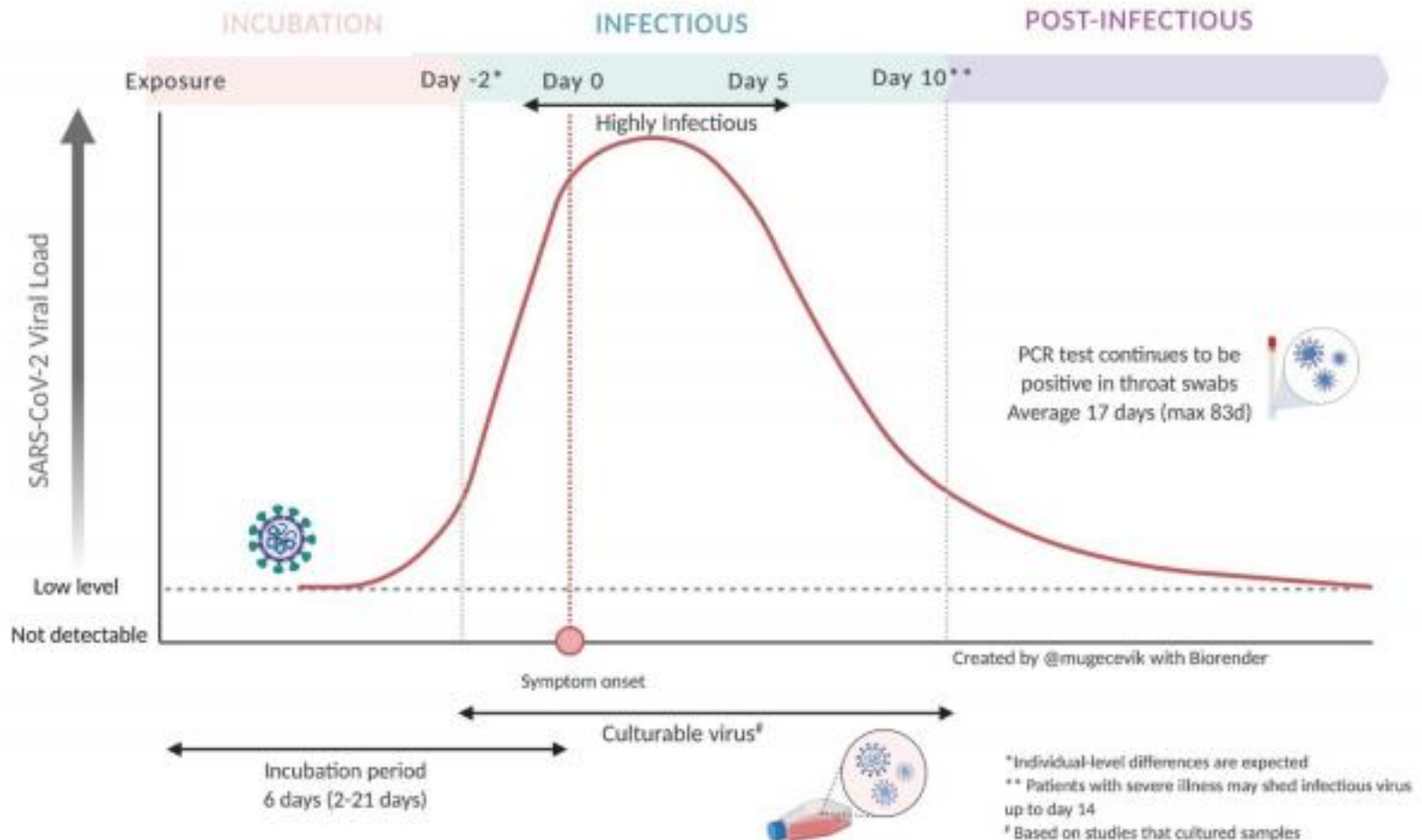
- Quarantine if you have had a close contact.
- Stay home if any symptoms and test.
- Isolate while awaiting test results including from other household members and especially those at risk of severe COVID-19.
- Complete isolation period if you test positive.



Peak infectiousness around start of symptoms

SARS-CoV-2 viral load and period of infectiousness

Cevik M et al. <https://doi.org/10.1101/2020.07.25.20162107>



Coronavirus spreads early

Previously we thought ...

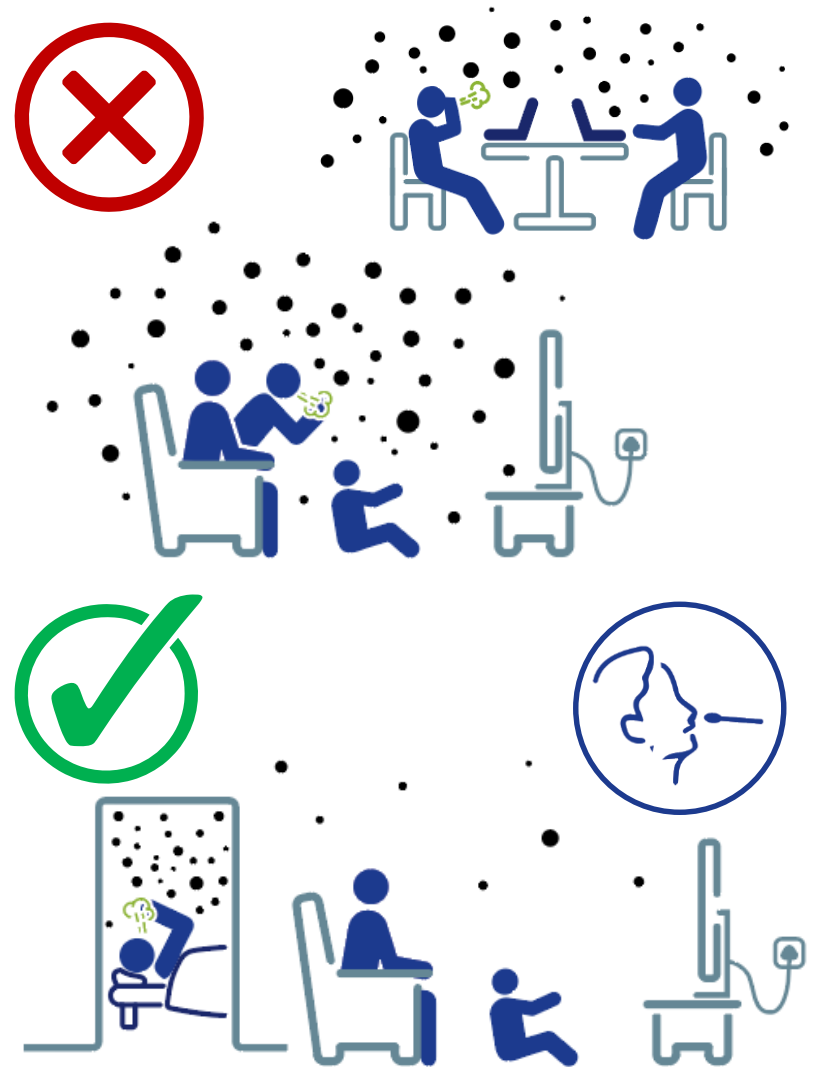
Sometime between 2 days before and up to 14 days after symptoms start.

Now we know ...

Most transmission occurring in first 2 days of infection.

What can we do...

- Quarantine if you have had a close contact.
- Stay home if any symptoms and test.
- Isolate while awaiting test results including from other household members and especially those at risk of severe COVID-19.
- Complete isolation period if you test positive.



Coronavirus is spread by children, teenagers & adults

Previously we thought ...

Mainly spread by symptomatic adults.

Now we know ...

- Spread by people of all ages including children, teenagers and adults with few or no symptoms.
 - People at highest risk of severe COVID-19: > 55 years and those with diabetes.
-

What can we do...

- Shield people at risk of severe COVID-19
- All ages need to work together to break transmission chains.



Protect yourself and others

December 2020

Protect yourself and others this summer

-  Sick? Stay home & arrange a test
-  Keep physical distance
-  Wear a mask
-  Cover your cough
-  Open doors & windows
-  Avoid crowds, close-contact & confined spaces
-  Wash/sanitise hands often



STAY SAFE
MOVE FORWARD

 Western Cape Government Health

FOR MORE INFORMATION:
Western Cape COVID-19 Hotline: 080 928 4102 (tollfree)
www.westerncape.gov.za

Gatherings: making safer choices



GO SMALLER

COVID-19 spreads at gatherings.
Re-consider the size of your Christmas gathering.

STAY SAFE
MOVE FORWARD



GO OUTDOORS

COVID-19 spreads at gatherings.
Re-consider indoor gatherings and take them outdoors.

STAY SAFE
MOVE FORWARD



GO SPACIOUS

COVID-19 spreads at gatherings.
Re-consider confined spaces and keep your gathering spacious.

STAY SAFE
MOVE FORWARD



GO VIRTUAL

COVID-19 spreads at gatherings.
Re-consider having a traditional Christmas gathering.

STAY SAFE
MOVE FORWARD

Conclusions

Concluding remarks

1. The **increase in active cases** in **all districts** (especially **Garden Route & Cape Metro**), represents an **established resurgence** in the Western Cape.
2. Our **local teams** are on **high alert for local surveillance and response** to clusters.
3. The biggest concern is the **non-adherence to protective behaviours** – there is a big need for **targeted enforcement and behaviour change** interventions.
4. The **hospitalisation data** shows a rapid **increase at this point** and **mortality rates are starting to increase**.
5. We have **contingency plans per geographic area** to **scale up hospital COVID capacity** as required, in response to increase hospitalisations.
6. Our key concern is that our **health care workers face significant strain** over the coming weeks. We need to **safe-guard them and their families**.
7. It is essential to ensure a **strong focus on behaviour change to ensure containment** for the next **18-24 months**, while we deal with the **challenges of the WCG recovery plan**, in the face of significant **upcoming budget challenges**.

Thank you