



**Western Cape  
Government**

Health

# DIGITAL PRESS CONFERENCE

Health Response Update

Prof Mary-Ann Davies

4 November 2020

# Purpose

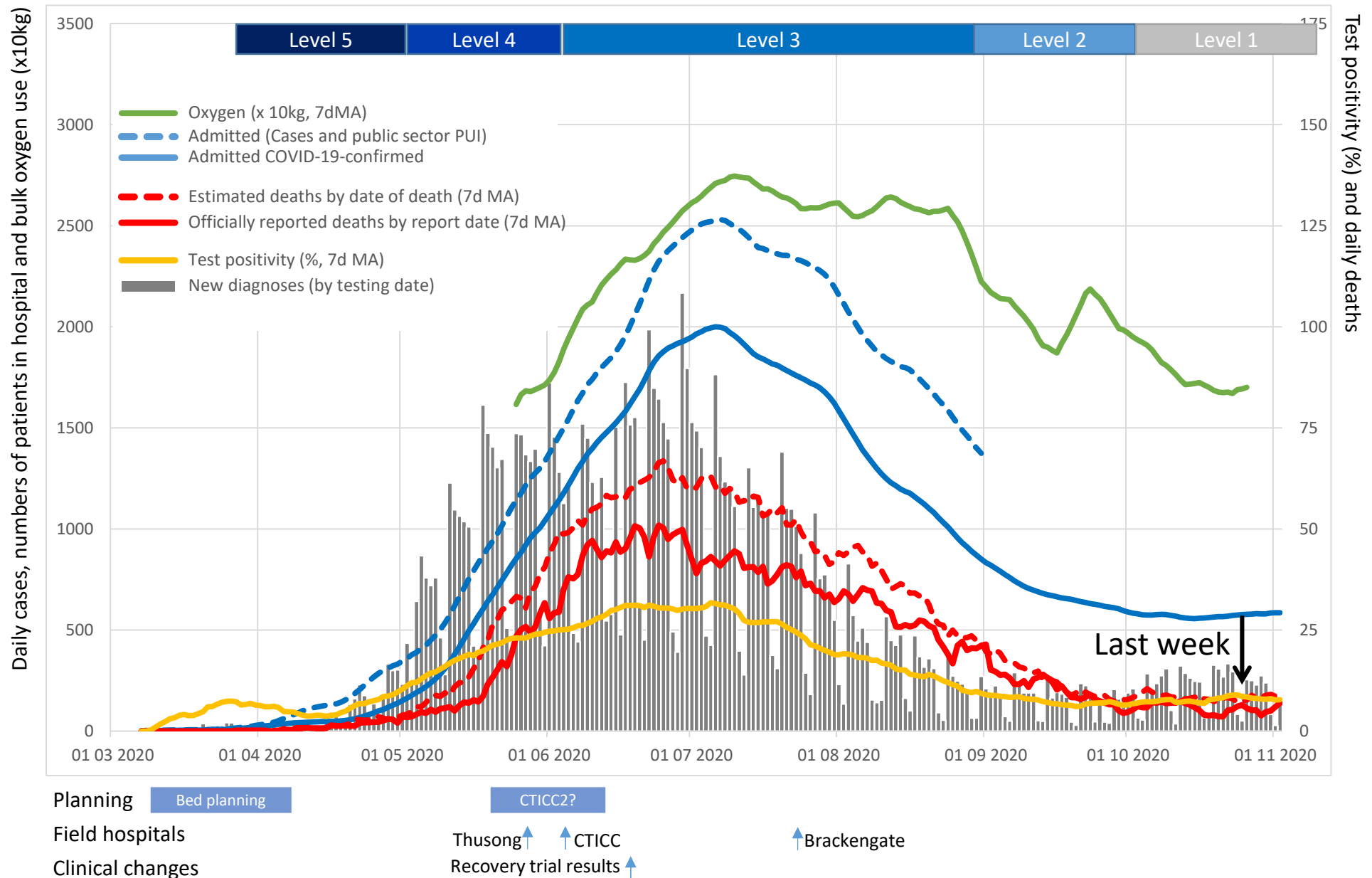
---

1. Update on cases, hospitalisations, mortality and testing
2. Focus on surveillance and outbreak response
3. Conclusions

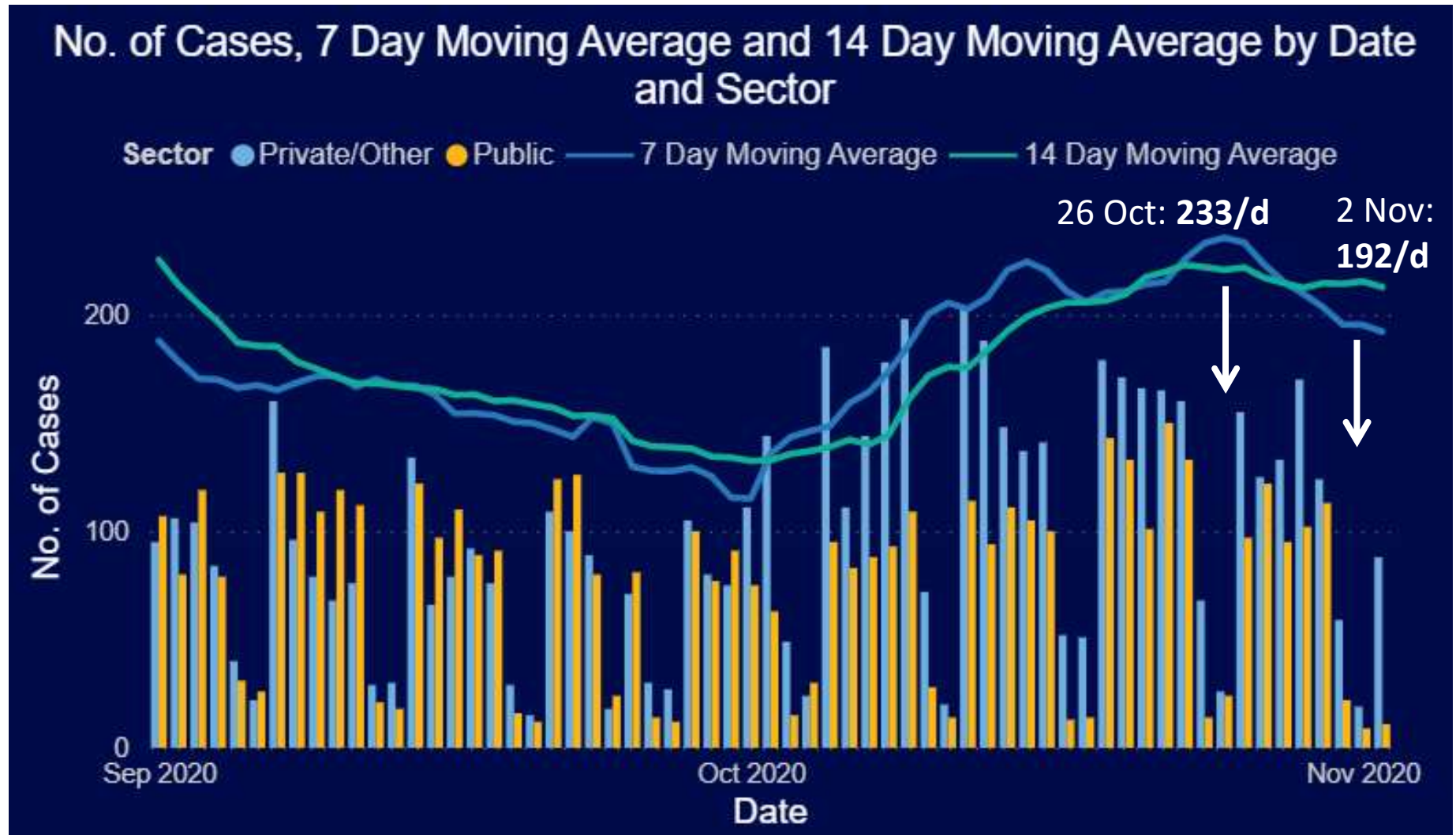
# Update on cases, hospitalisations and mortality



# Integrated testing, case, hospitalisation and mortality trends



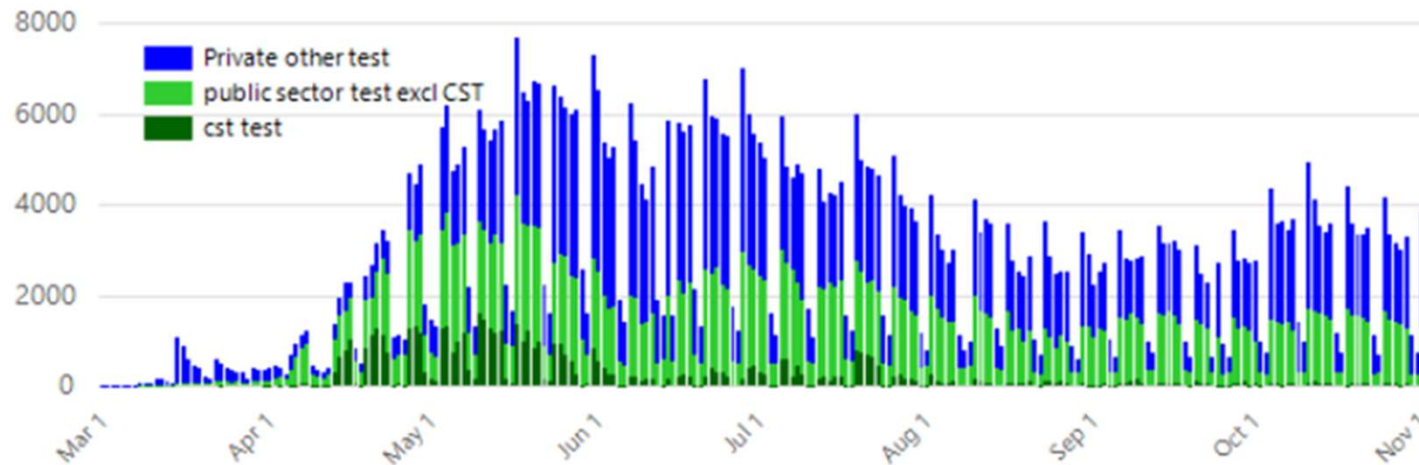
# COVID-19 case reporting trends in the Western Cape



No further increase in new cases per day

# COVID-19 testing trends in the Western Cape

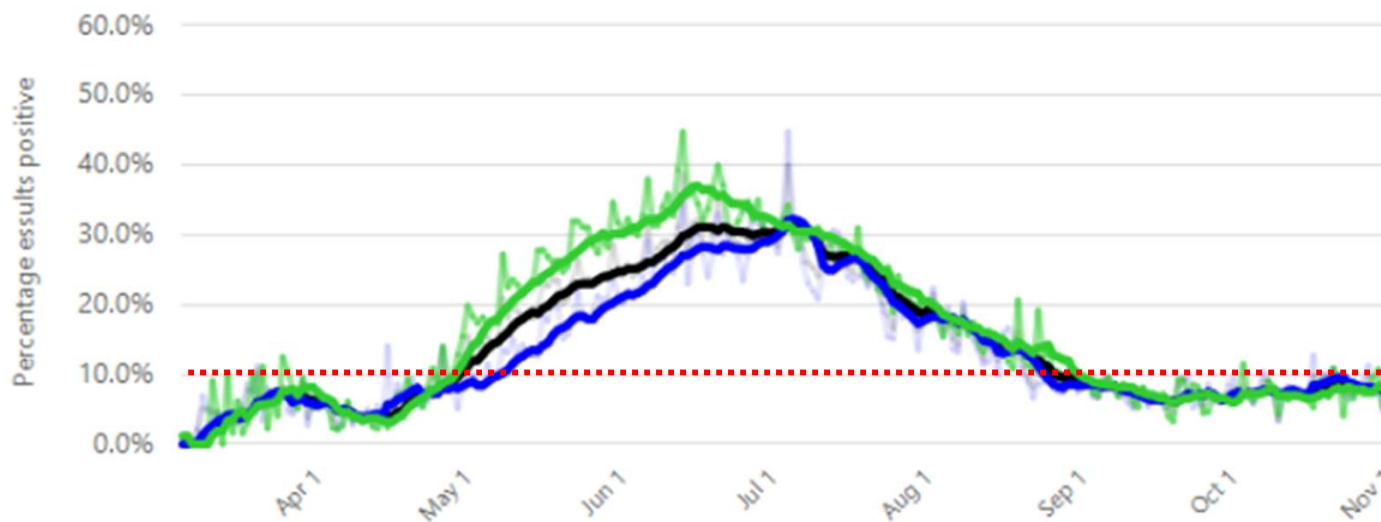
Numbers of tests done



20,000 tests  
per week;

~87% in  
public sector

Test positivity over time

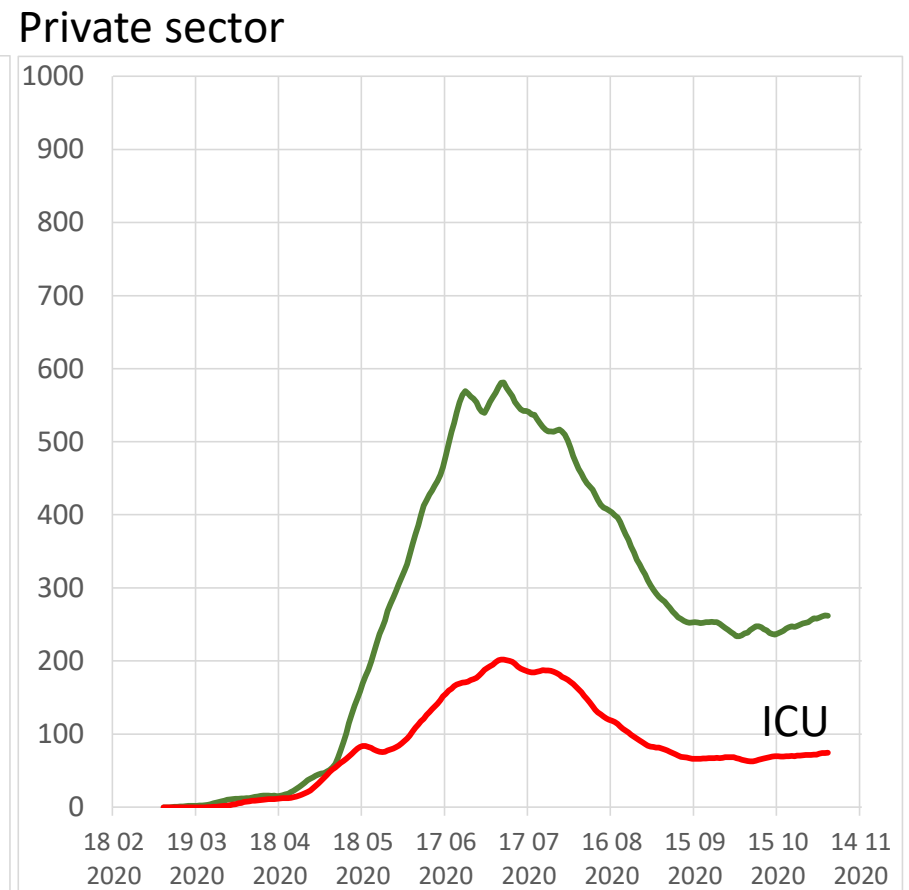
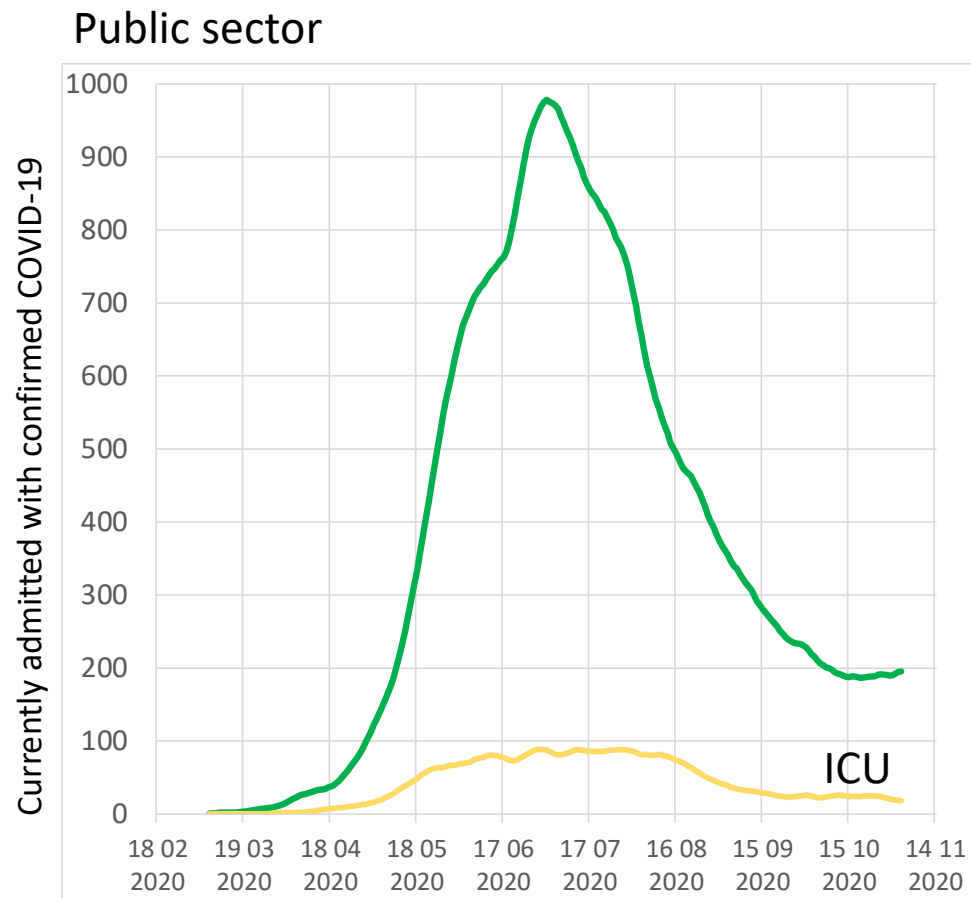


**% positive**

Last wk: 11%

Now: <10%

# Trends in hospitalisation

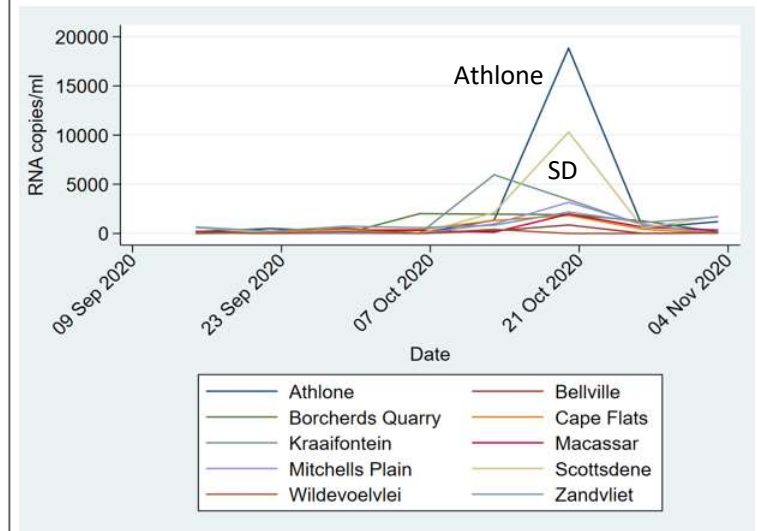
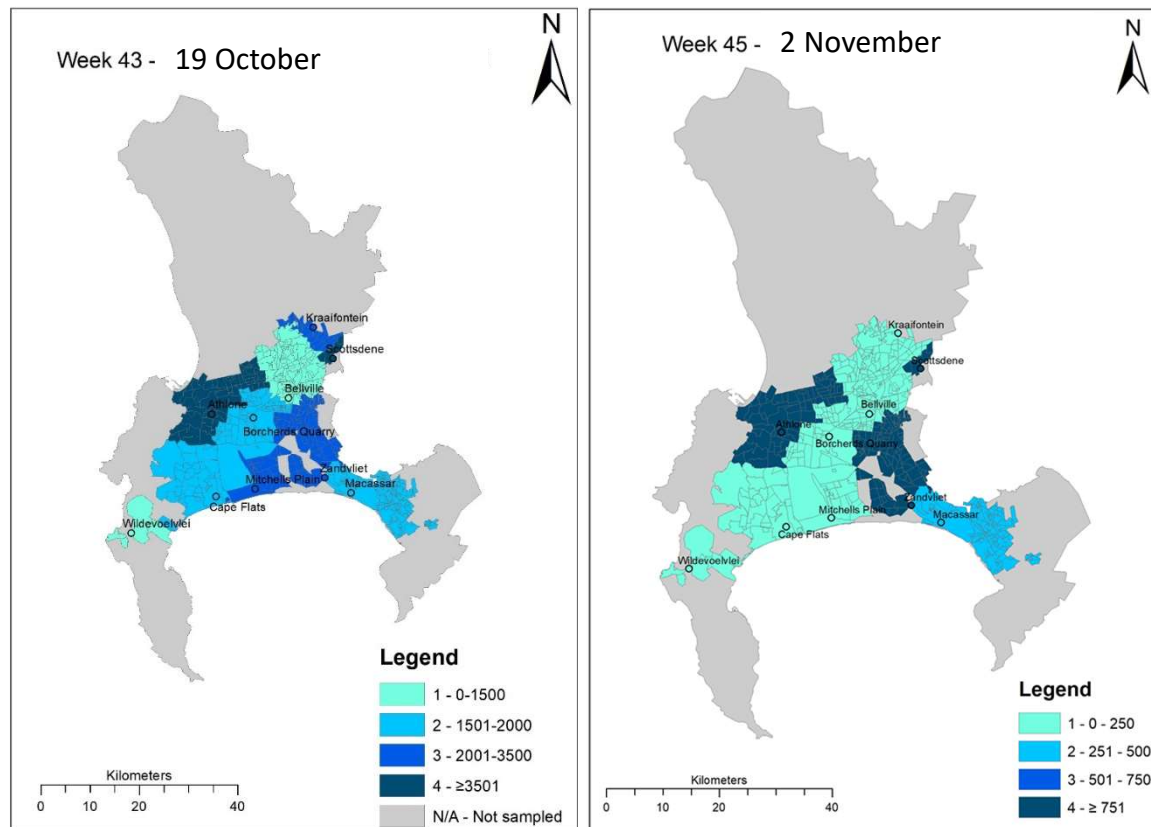


*Lines are not stacked. PUIs excluded*

# Triangulating with waste-water surveillance

## SAMRC COVID- 19 AND WASTEWATER EARLY WARNING SYSTEM

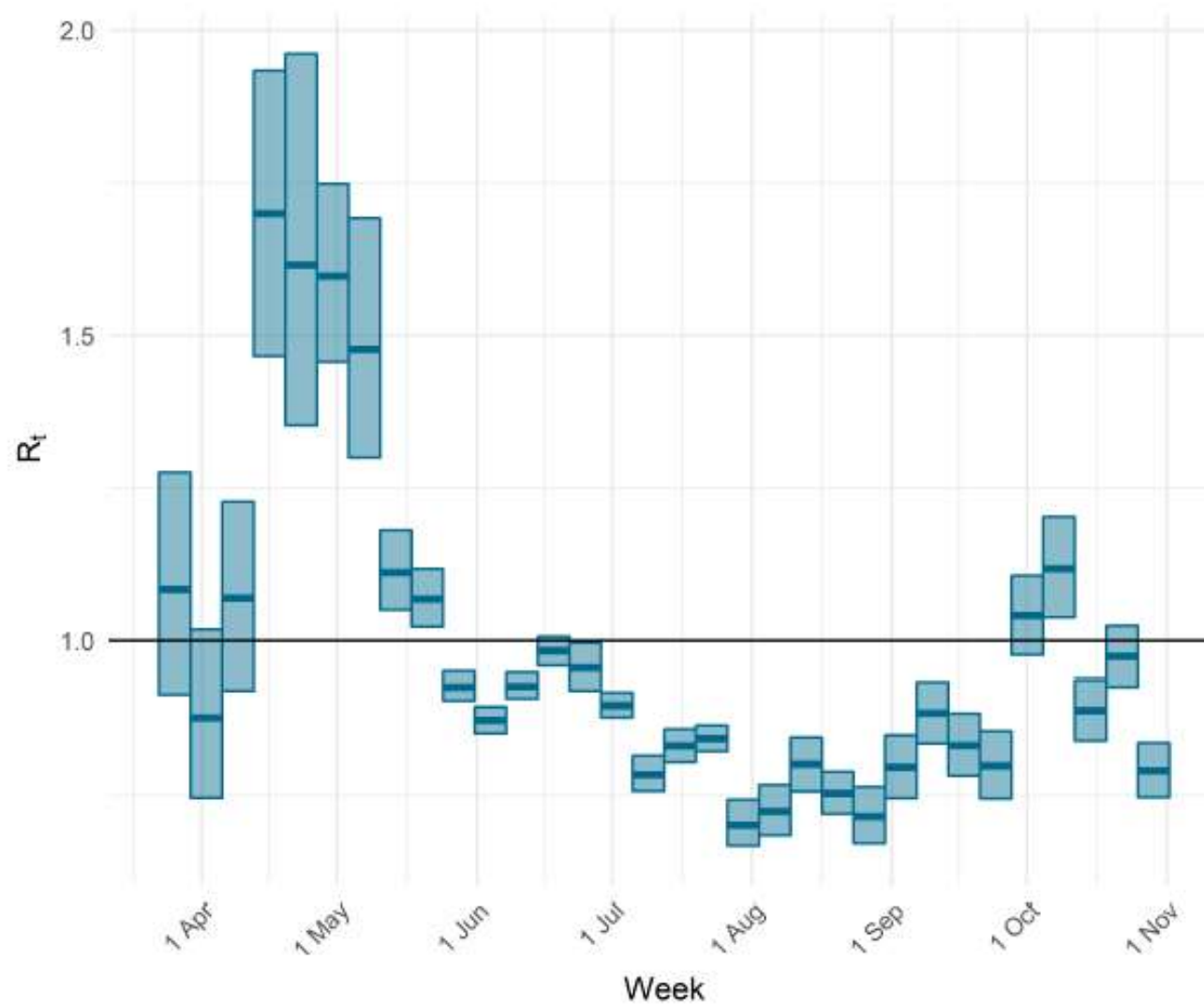
City of Cape Town – 10 wastewater treatment plants



**\*Note:** RNA copies categories adjusted weekly, according to the inter quartile range.



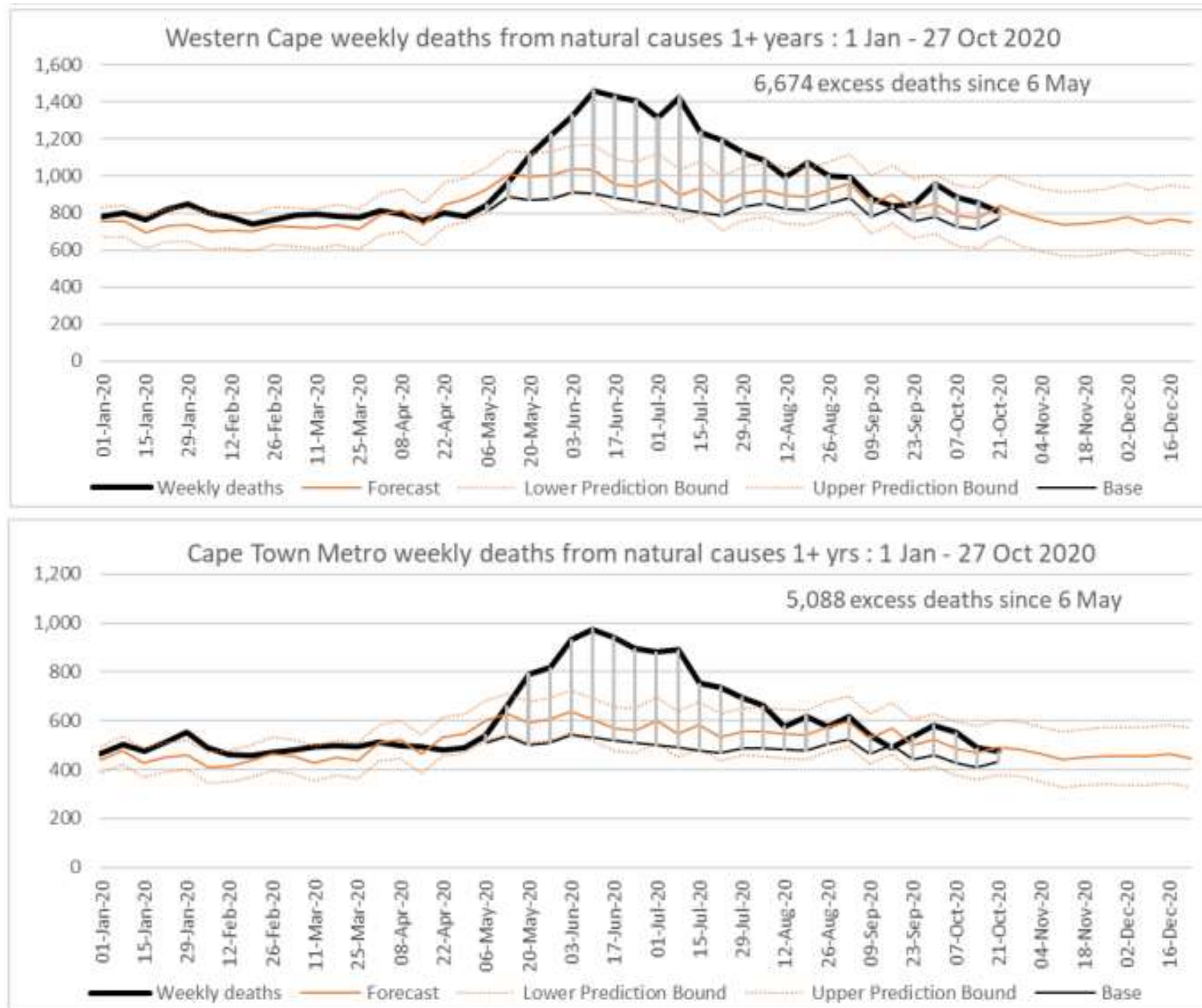
# Week-on-week changes in reproductive number (cases)



$R_t$  based on cases

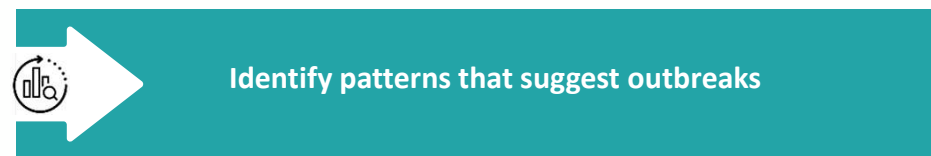
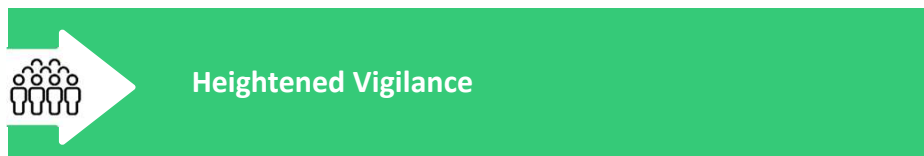
(Source L Rossouw: [https://lrossouw.github.io/covid-19/estimating\\_r\\_za.html#459\\_Western\\_Cape](https://lrossouw.github.io/covid-19/estimating_r_za.html#459_Western_Cape))

# Excess deaths update

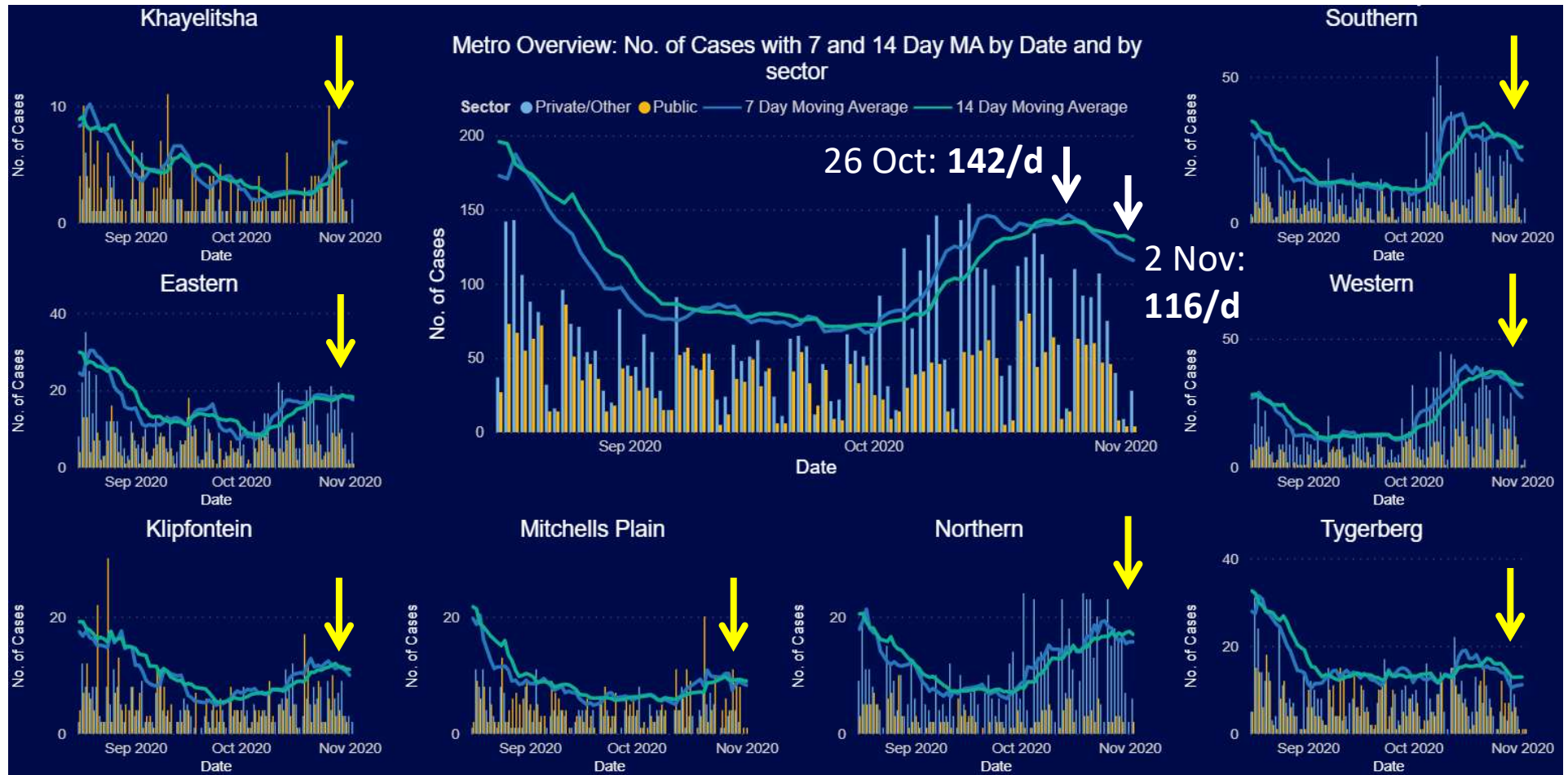


# Focus on surveillance and outbreak response

# Surveillance Process

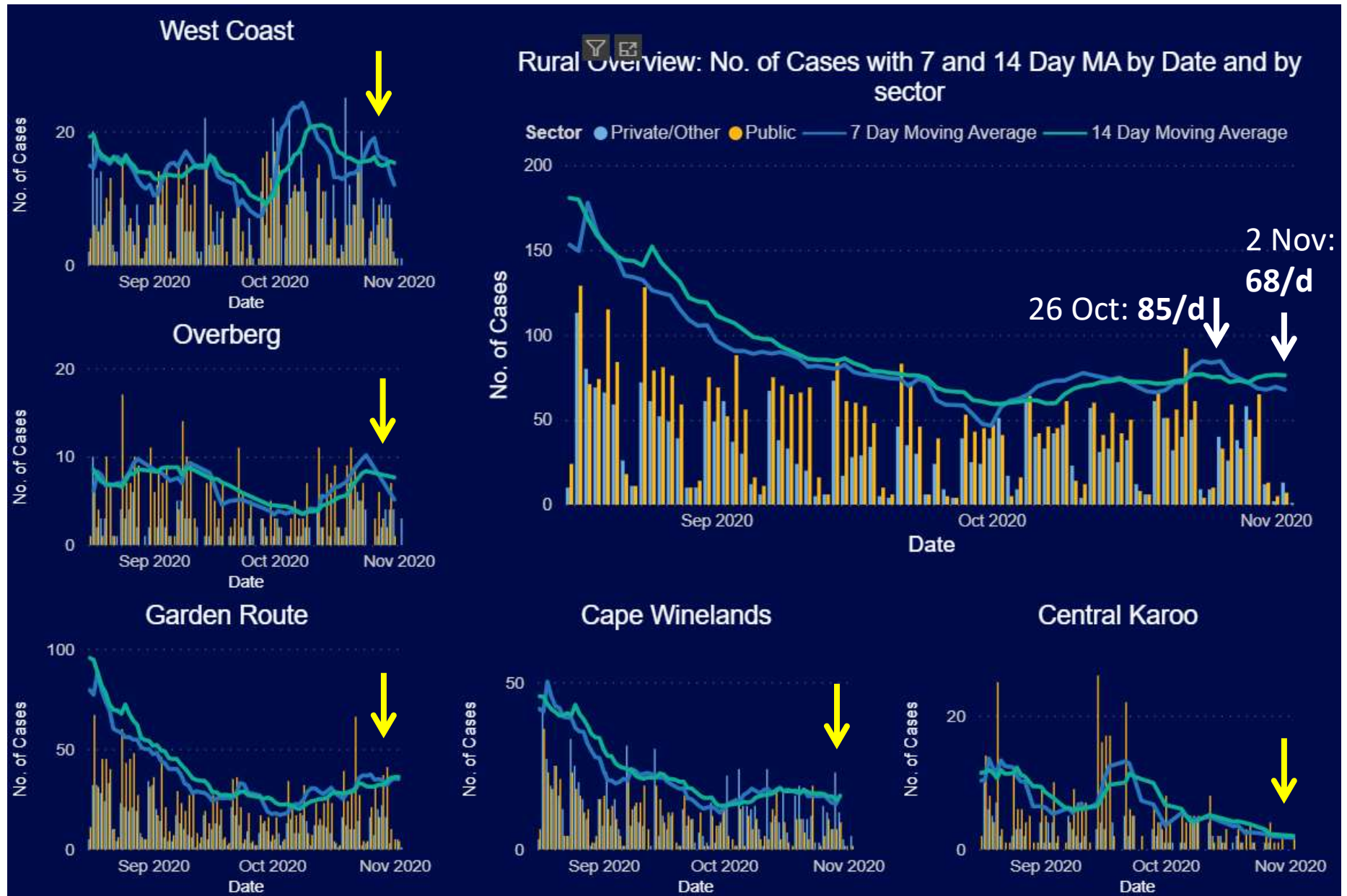


# More detailed trends in cases by district in Metro



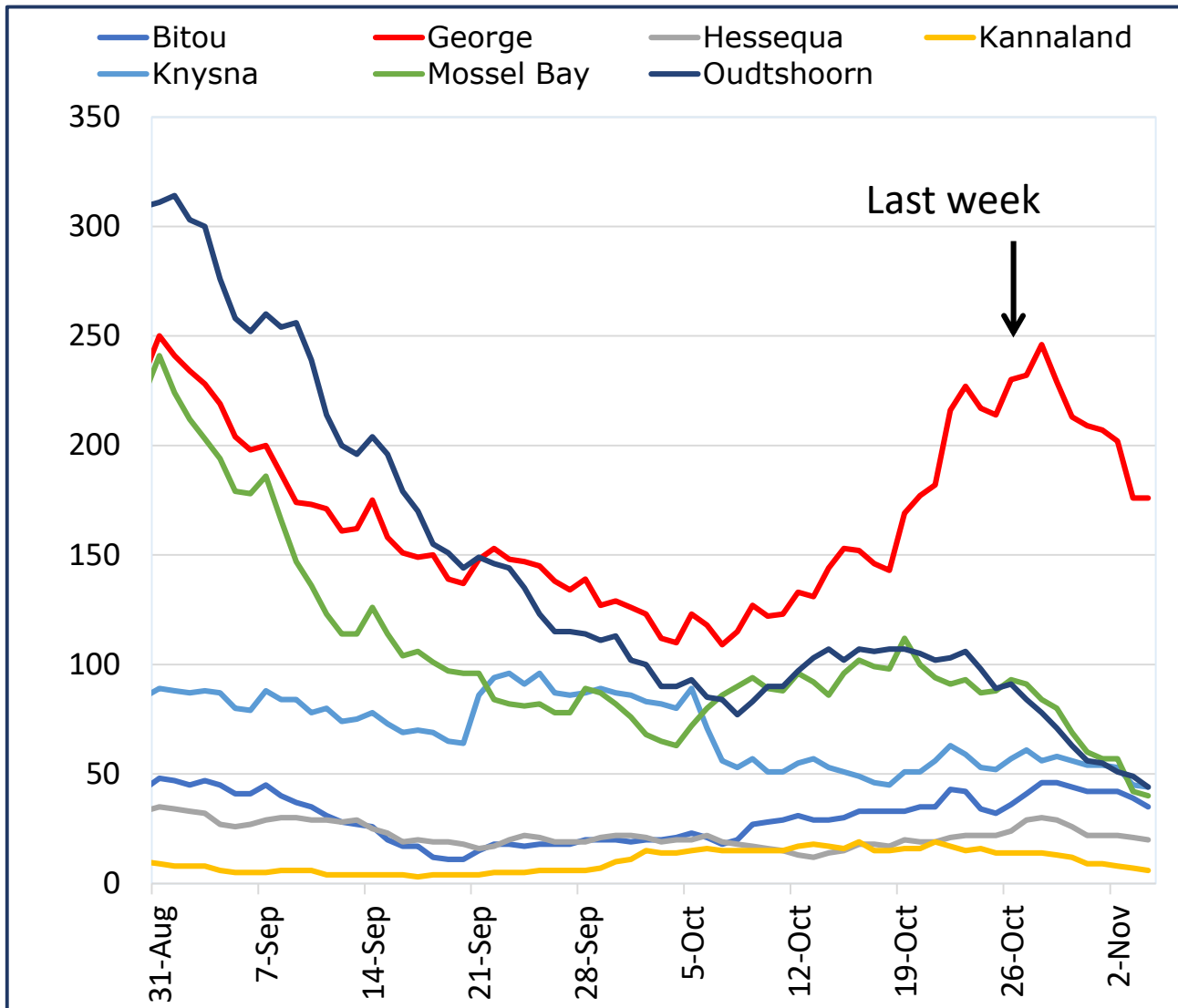
Most sub-districts decreasing or flattening but increases in Khayelitsha; numbers small

# More detailed trends in cases by sub-district outside Metro





## A closer look at active cases in the Garden Route



### George

Multiple areas, esp Thembaletu, Pacaltsdorp & Uniondale.

Fewer cases in last few days.

Most cases are age 20-30 years.

### Bitou/Knysna

No clear clusters;

Local travellers in Bitou on holiday.

# Huddle report



**2 November 2020:**

## **Surveillance Huddle: Top points**

1. Garden Route: George: Multiple areas affected, mainly Thembaletu, Pacaltsdorp and Uniondale. Last two days have fortunately been much less than the recent pattern, but there are many outstanding results, so will have to wait and see. Most cases are people between 20-30 years. **Actions: Starting and arranging loud hailing, screening by Home based Carers in suburbs, awareness.**  
Knysna and Bitou: 19 new cases yesterday. No clear clusters, Local travellers who have recently returned home from a holiday. Some positives from hospital labour ward staff and asymptomatic new mothers.  
**For the three municipalities: Send gms messages to their clientele, memes on social media, awareness (e.g. lamp pole posters), radio adverts. Meeting tomorrow with relevant multi-disciplinary JOC team to discuss compliance at restaurants/bars and plan for holiday season.**
2. Cape Winelands: No clusters
3. West Coast: Cederberg cases asymptomatic testing pre-surgery. **Need to be vigilant with the fruit farms. Working with the farmers for education campaigns, awareness etc.**
4. Overberg: Low numbers across the district, Bredasdorp hospital outbreak under control
5. Khayelitsha/Eastern: No specific clusters or hotspots in Khayelitsha.



# Conclusions

## Concluding remarks

---

1. Case numbers not increasing further in the last week.
2. The hospitalisation and mortality data remain stable at this point.
3. Increase in cases in **specific geographic areas**, being tracked.
4. It is essential to ensure **a strong focus on surveillance and containment** for the next 18-24 months.
5. The focus should be on **strong behaviour change to avoid super-spreader events** especially as move towards holiday season.

# Thank you