



Western Cape
Government

FOR YOU

Health

Digital Press Conference

Update on COVID-19 and Vaccination Roll-out

Dr K Cloete

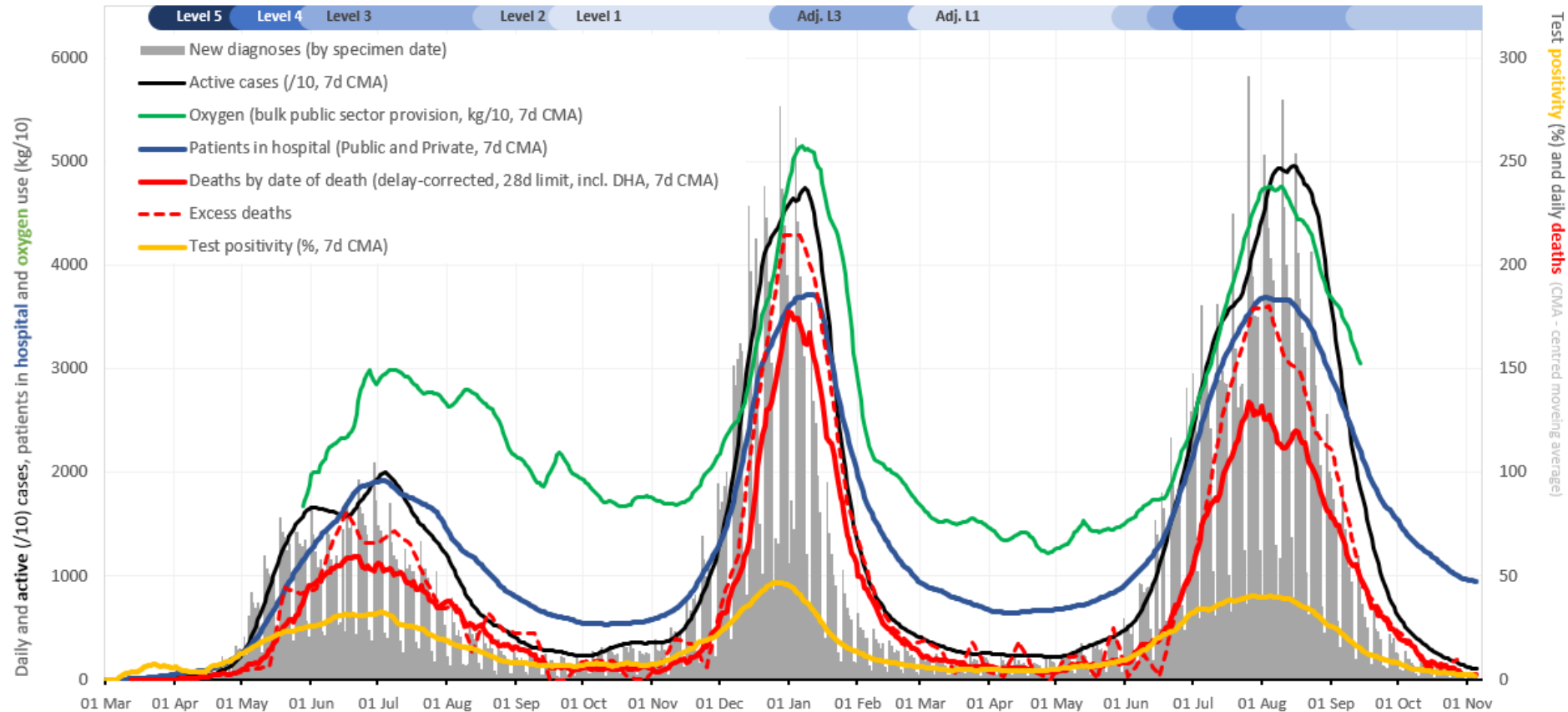
9 November 2021

Overview

1. COVID Surveillance & Response Update
2. The current status of the health platform
3. Vaccine Implementation update
4. Key messages
5. Conclusions

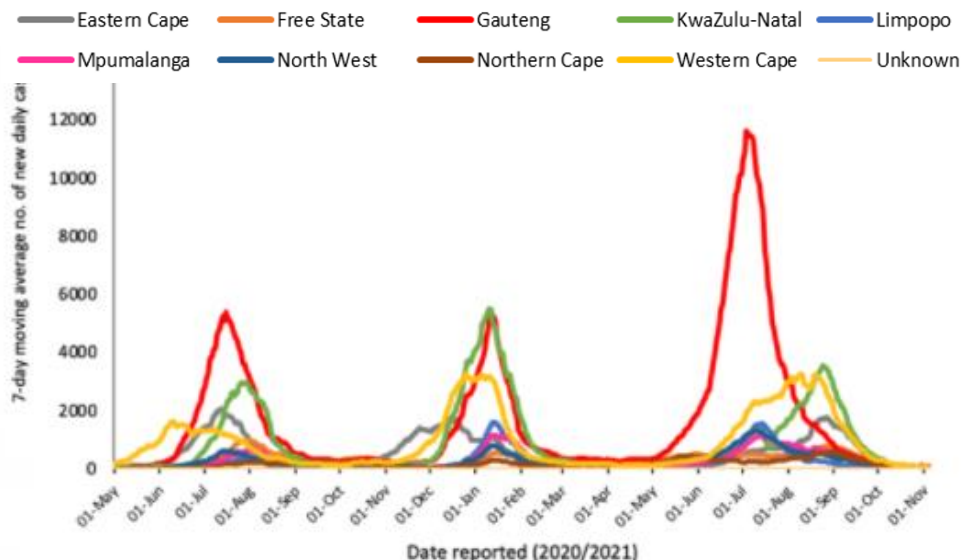
COVID Surveillance & Response Update

Integrated testing, case, hospitalisation and mortality trends



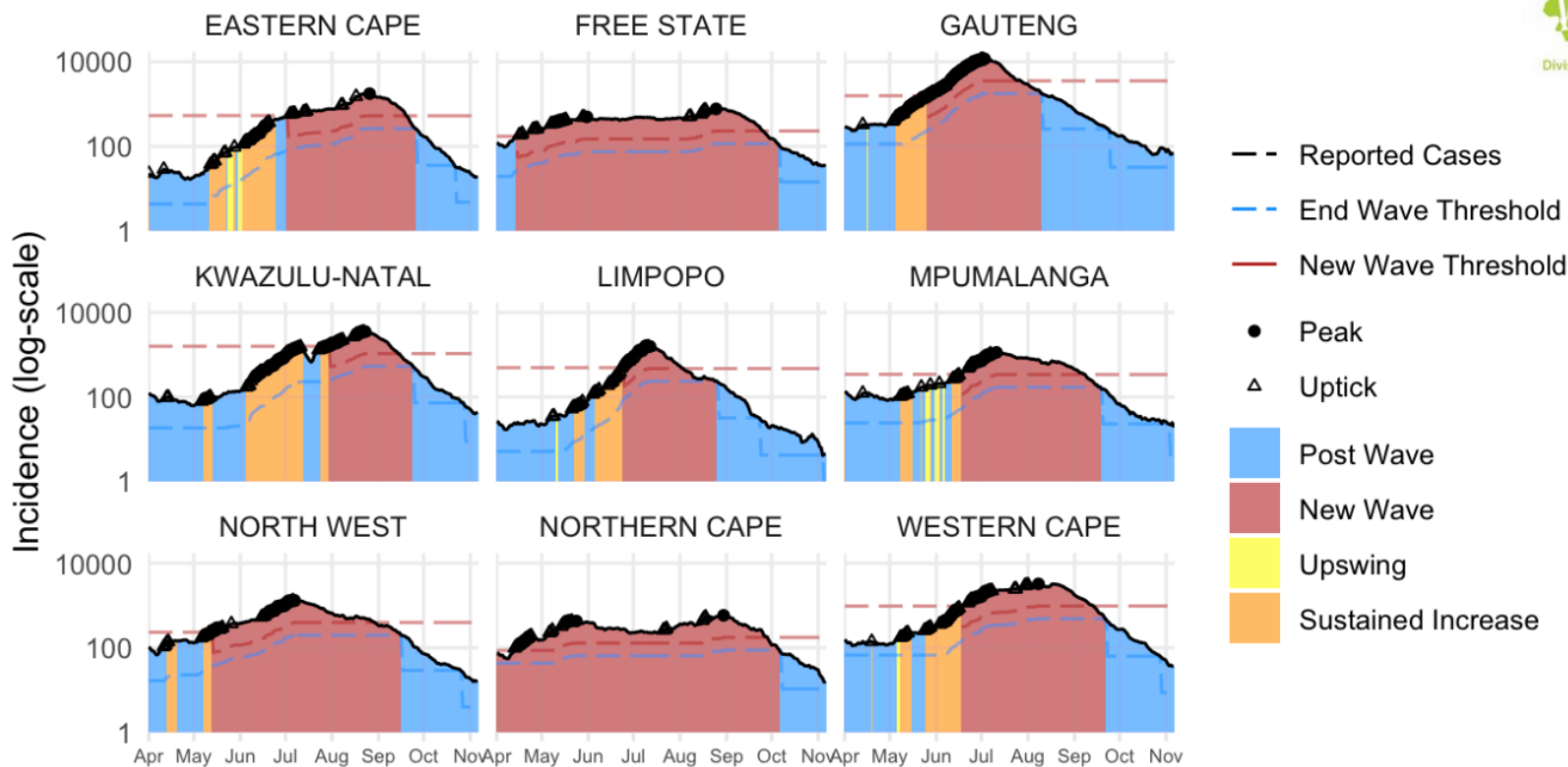
National trends

- South Africa as a whole and all provinces are clearly out of the 3rd wave.
- Small uptick noted in Gauteng in the last week – mainly due to delayed reporting of antigen tests.



7-day moving average of new cases by province

NATIONAL INSTITUTE FOR COMMUNICABLE DISEASES
Division of the National Health Laboratory Service



SOUTH AFRICAN COVID-19 MODELLING CONSORTIUM



Provincial Resurgence Overview

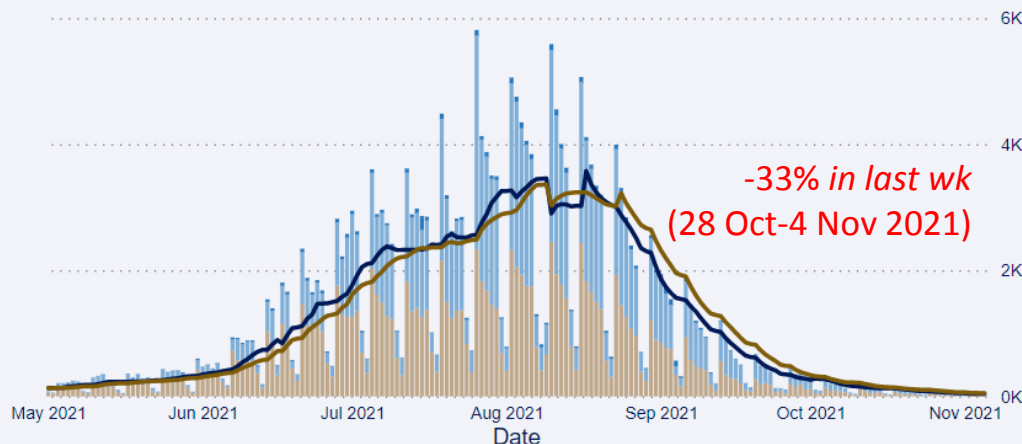


Health Impact Assessment
WC Department of Health
Last Updated:

11/8/2021 4:00:44 AM

No. of Cases, 7 Day Moving Average and 14 Day Moving Average by Date and Sector

Sector ● Private/Other ● Public ● Unknown — 7 Day Moving Average — 14 Day Moving Average



Date of Diagnosis/Admission

5/1/2021

11/5/2021

Date of Death

5/1/2021

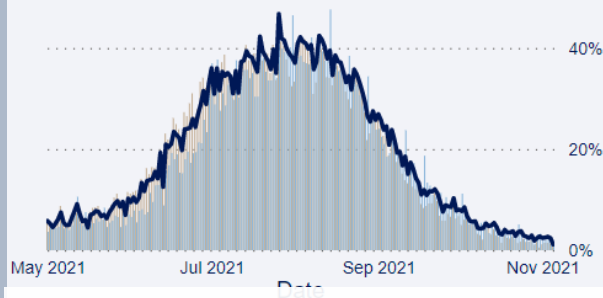
11/5/2021

Select District, Subdistrict:

- ☐ Cape Winelands
- ☐ Central Karoo
- ☐ City of Cape Town
 - ☐ Eastern
 - ☐ Khayelitsha
 - ☐ Klipfontein
 - ☐ Mitchells Plain
 - ☐ Northern
 - ☐ Southern
 - ☐ Tygerberg
 - ☐ Western
- ☐ Garden Route
- ☐ Overberg
- ☐ West Coast

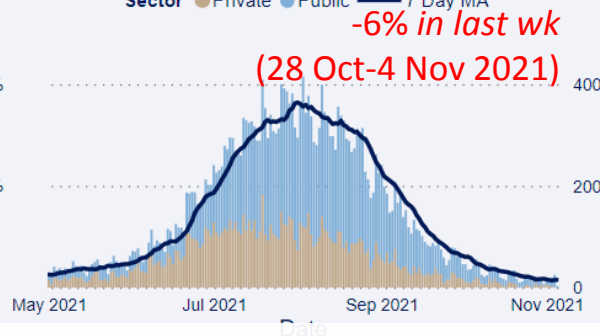
Proportion Positive and Overall Positivity by Date and Sector (*Provincial Only)

Sector ● Private/Other ● Public — Overall Positivity



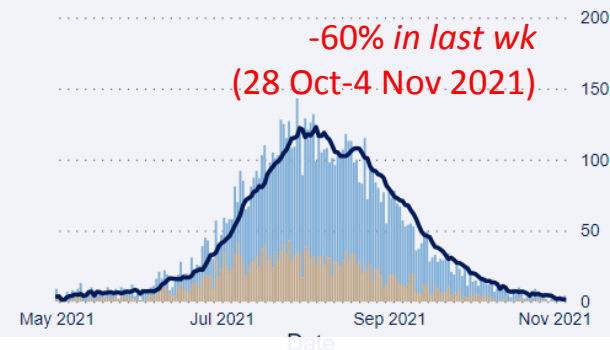
No. of New Admissions and 7 Day MA by Date and Sector

Sector ● Private ● Public — 7 Day MA



No. of Deaths and 7 Day MA by Date and Sector

Sector ● Private/Other ● Public — 7 Day MA



Provincial Overview

- Case numbers continue on a downward trend.
- The **proportion positive** has decreased to **2.4%** now.
- We are currently seeing an average of around **52 new diagnoses, 15 new admissions and 2 deaths each day.**



8/1/2021

11/5/2021



Metro Resurgence Overview



Health Impact Assessment
WC Department of Health
Last Updated:

11/8/2021 4:00:44 AM

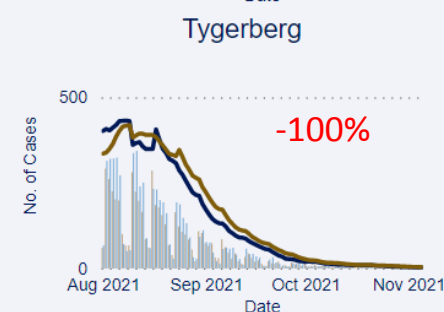
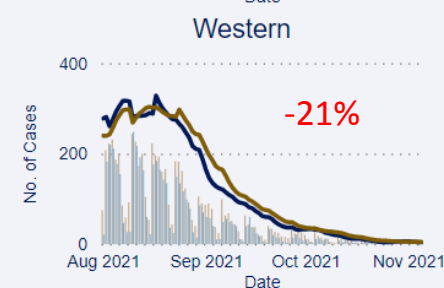
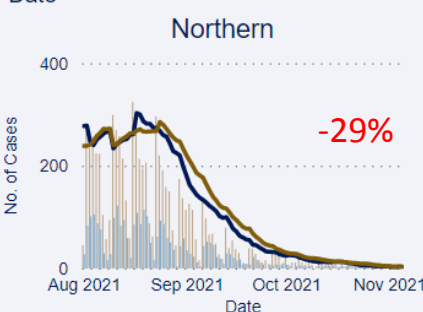
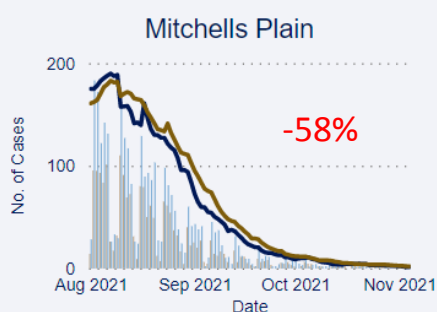
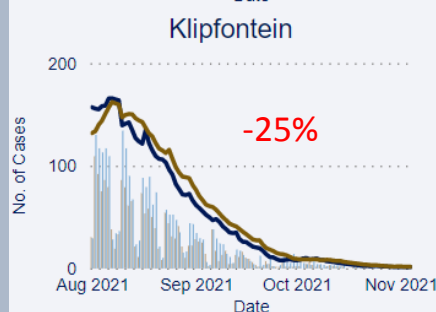
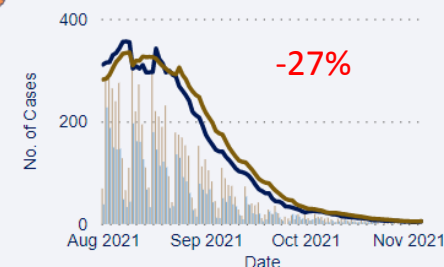
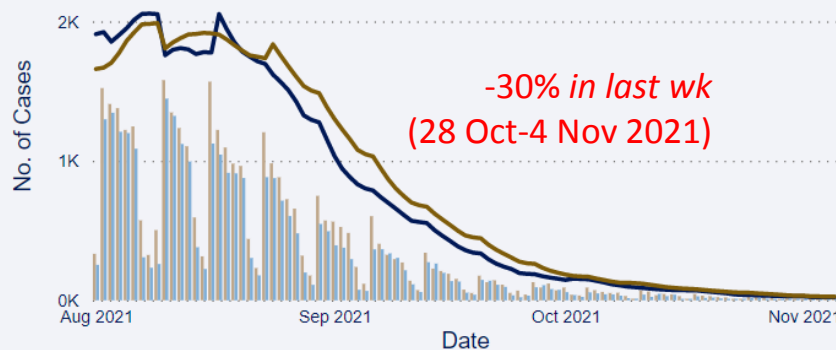
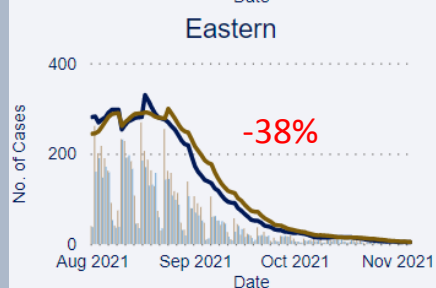
Southern

Khayelitsha



Metro Overview: No. of Cases with 7 and 14 Day MA by Date and by sector

Sector ● Private/Other ● Public — 7 Day Moving Average — 14 Day Moving Average

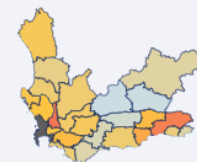


Metro Overview

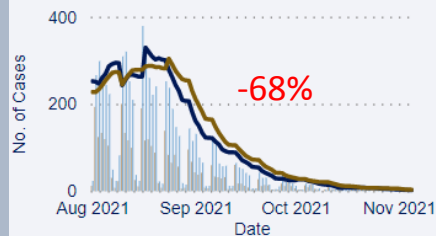
- Overall, there is a **30% week on week decrease** in cases in the **Metro**.
- Only Khayelitsha showing a small percent increase in week-on-week cases, but low absolute numbers of cases.



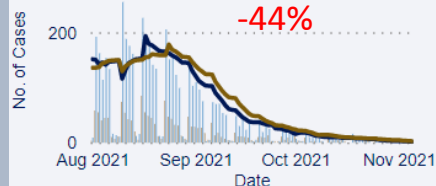
Rural Resurgence Overview



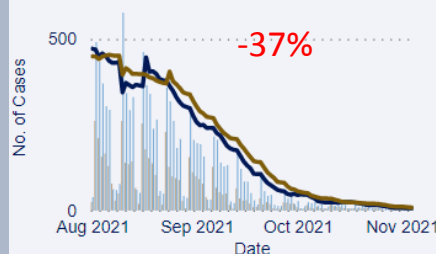
West Coast



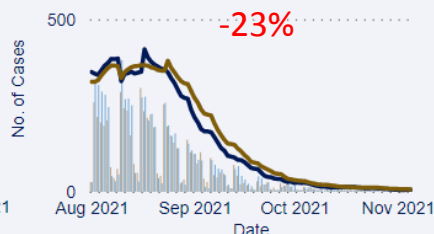
Overberg



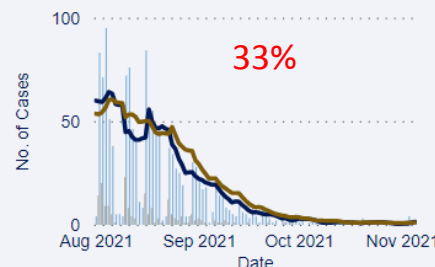
Garden Route



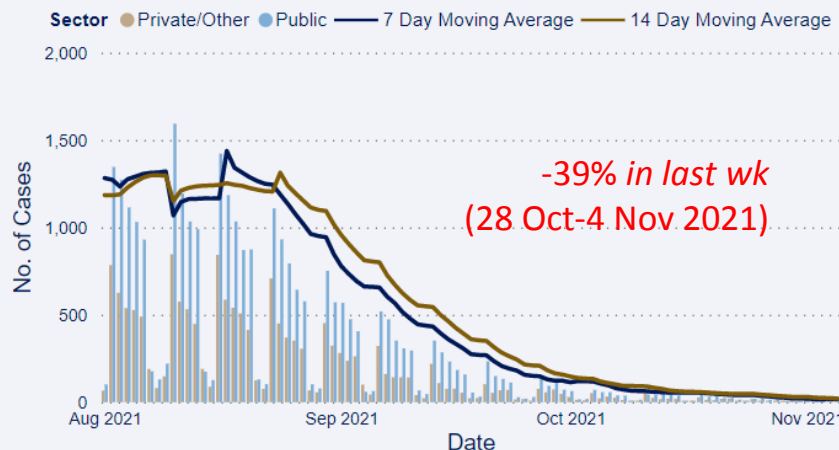
Cape Winelands



Central Karoo



Rural Overview: No. of Cases with 7 and 14 Day MA by Date and by sector



No. of Cases by Rural Subdistrict

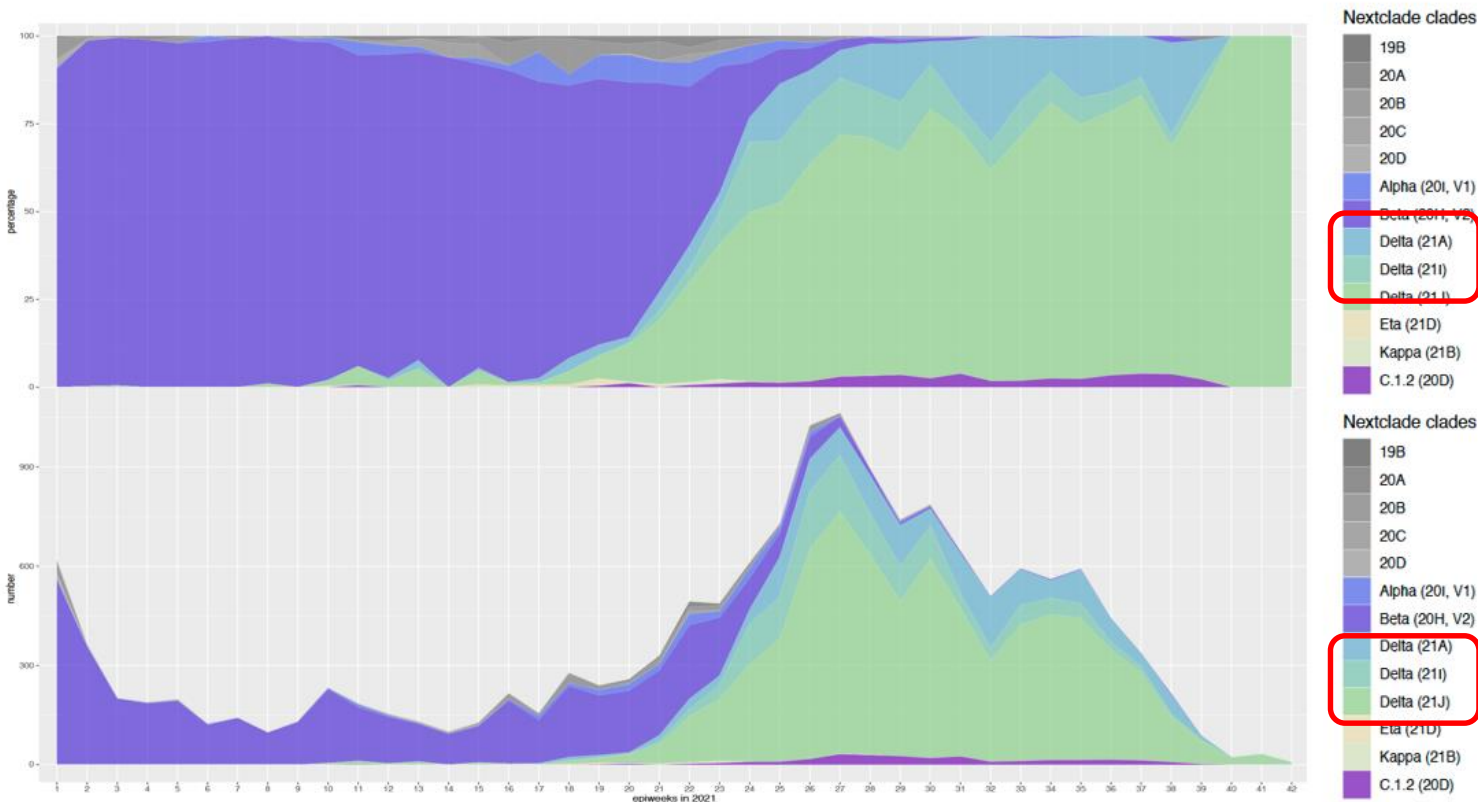
District	Subdistrict	No. of Cases
Cape Winelands	Drakenstein	4,739
Garden Route	George	4,486
Garden Route	Mossel Bay	3,258
Overberg	Theewaterskloof	2,652
Garden Route	Oudtshoorn	2,642
West Coast	Swartland	2,405
Cape Winelands	Stellenbosch	2,341
West Coast	Saldanha Bay	2,270
West Coast	Matzikama	2,071
Cape Winelands	Langeberg	2,012
Cape Winelands	Breede Valley	1,884
Cape Winelands	Witzenberg	1,752
West Coast	Bergvliet	1,752
Garden Route	Hessequa	1,742
Overberg	Overstrand	1,723
Garden Route	Knysna	1,602
West Coast	Cederberg	1,452
Central Karoo	Beaufort West	1,069
Garden Route	Bitou	1,048
Overberg	Cape Agulhas	992
Overberg	Swellendam	814
Garden Route	Kannaland	485
Central Karoo	Prince Albert	250
Central Karoo	Laingsburg	215
Total		45,656

Rural Overview

- A similar decrease in case numbers is being seen in the rural districts as well.
- There are percentage increase in the Central Karoo, but also with very low absolute case numbers

Update on genomic surveillance in South Africa

Distribution and number of clades in South Africa, 2021 (N= 16 258)



Delta has recently been split into three clades (21A, 21I, 21J).

Sequencing data ending epi week 42 (ending 23 October 2021)

Currently in epi week 44 (ending 6 November 2021)

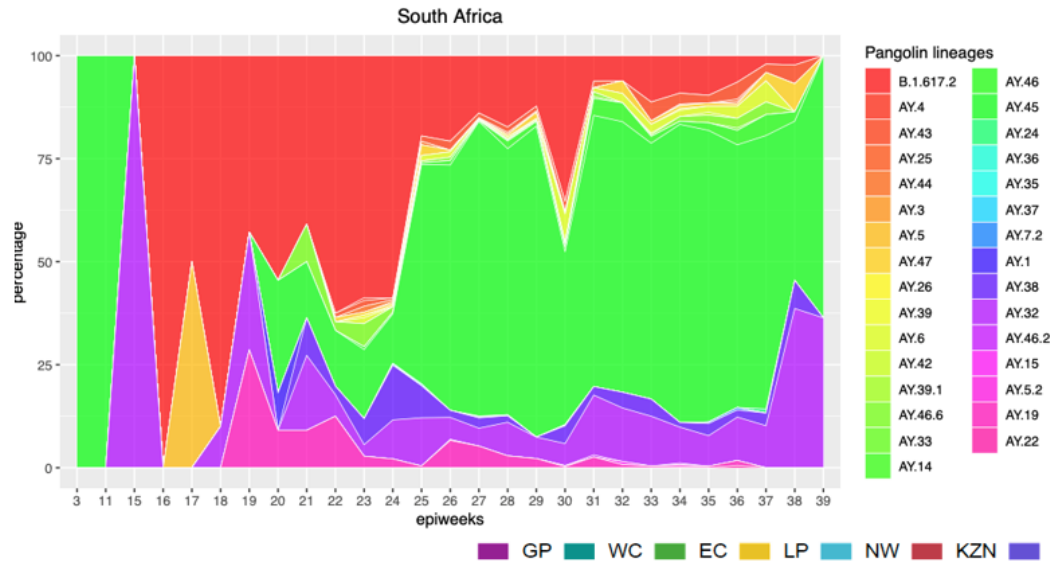
Delta came to dominate by end June at >65% , in July at >85% and in August and September at >90%
C.1.2 present at <4% frequency since March



- Delta remains overwhelmingly dominant variant globally and in SA, with very little Beta or C.1.2 detected, though C.1.2 is established at constant and low levels in every province including the WC.
- Delta has been split into 3 clades and several sub-lineages.
- Based on the updated definition of the new Delta sub-lineage in the UK (AY.4.2.), this lineage **has not been** detected in South Africa. Lamda and Mu variants **have not been** detected in SA.

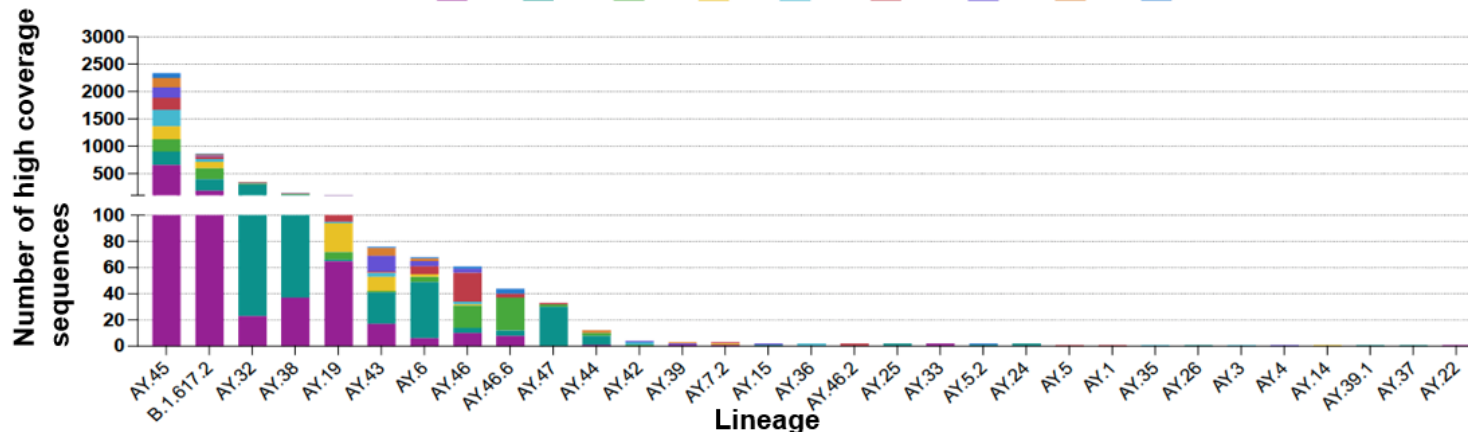
Update on genomic surveillance in South Africa

Delta sub-lineages* in South Africa



Delta in South Africa is dominated by the AY.45, B.1.617.2, AY.32, AY.38 and AY.19 sub-lineages, although the dominance of sub-lineages varies with province. None of these are known to have a fitness advantage.

*Data sourced from the GISAID variant surveillance file, high coverage sequences only, lineages assigned using lineages version 2021-10-18

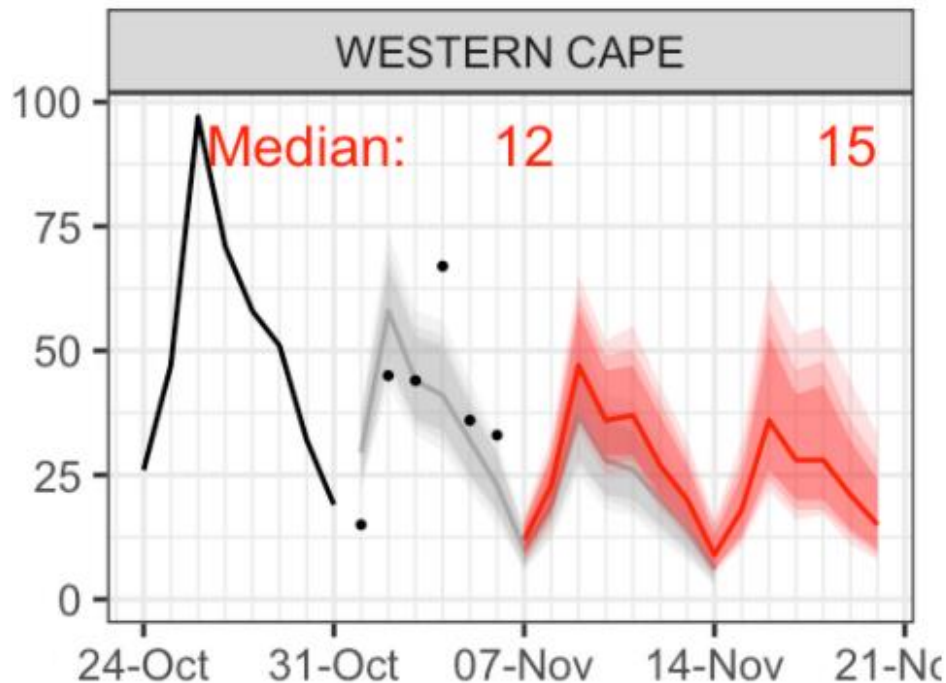


- AY.45 has been the dominant Delta sub-lineage in South Africa with some variation between provinces.

Short term predictions from SACMC – new cases

Actual cases continue to fit well with predicted numbers for the past week with ongoing low case numbers expected for the coming week.

Await longer term scenarios on 4th wave that take into account seroprevalence, vaccination expected behaviour changes and possible emergence of new variants



Black line:
previous cases

Grey line:
forecast for this week

Dots:
actual cases

Red line:
Prediction for next week

Proposal for differentiated approach to wave 4:

 Watch case indicators but  RESPOND (i.t.o restrictions) to hospital indicators

– probability that hospital indicators will be met with high vaccine coverage & high levels of prior infection is expected to be very low, but SACMC 4th wave scenarios will inform our preparation for the 4th wave.

Indicator	Resurgence Metric
First warning: ↑ health service demand in 14-21d	<ul style="list-style-type: none"> • <i>Large ↑ case incidence (↑ for ≥ 1week of ≥ 20%) & moderate case numbers (200-300 new cases/day)</i> • <i>Moderate ↑ case incidence (increase for ≥ 1week of ≥ 10%) when case numbers already high (> 300 new cases/day)</i> • <i>Facility-based test positivity > 15% or Overall test positivity 7%</i> • >15% of hospitals have >10% of beds occupied by COVID-19 patients • >50% increase in pre-COVID-19 baseline of oxygen consumption by hospitals (>18.3 tons per day) for ≥3 day
Second warning: ↑ health service demand in 7-14d	<ul style="list-style-type: none"> • <i>Overall test positivity >15%</i> • <i>7 dma of new cases is >10% more than 40dma of new cases for ≥ 14 consecutive days if 40dma >100 new cases/day</i> • <i>Testing approaches 80% of max capacity OR TAT >24 hrs (urgent cases - admissions) & >48 hours (non-urgent cases) for 2d consecutively</i> >40% of hospitals have >10% of beds occupied by COVID-19 patients • >15% week-on-week increase in 7 day moving average of current admissions • >75% increase in pre-COVID-19 baseline of oxygen consumption by hospitals (>21.4 tons per day) for ≥3 days
Third warning: ↑ health service demand in 2-7d	<ul style="list-style-type: none"> • >20% week-on-week increase in 7 day moving average of current admissions. • >50% bed occupancy of available HC, ICU and HFNO₂ COVID-19 beds. • COVID-19 patients occupy >20% of beds in >50% of hospitals OR >10% of beds in >80% of hospitals. • >100% increase in pre-COVID-19 baseline of oxygen consumption by hospitals (or >24.4 tons per day) for ≥3 days.
Health service capacity close to overwhelmed	<ul style="list-style-type: none"> • Sustained increase of probable/confirmed cases needing hospital admission (as per first, second and third warning indicator) • Absolute current COVID-19 hospitalization >2800 • BUR % for designated COVID-19 general beds >70% in a district/province • BUR % for designated COVID-19 critical care beds (HC, intensive care and high flow nasal oxygen) >80% • Oxygen consumption/supply >200% baseline pre-COVID-19 reference level (or >36.6 tons/day)

Current status of the health platform

Acute service platform – current picture

1. The **Metro hospitals** have an average **BOR of 90%**; **George** drainage area hospitals at **69%**; **Paarl** drainage area hospitals at **69%** & **Worcester** drainage area hospitals at **75%**. **Critical care BOR** for designated COVID beds for the province at **23%**.
2. **COVID & PUI cases** currently make up **4%** of all available acute general hospital capacity in both Metro and Rural Regional Hospital drainage areas.
3. **COVID inter-mediate care** – the **Brackengate** Hospital of Hope currently has **21** patients (**6% BOR**), **Sonstraal** currently has **0 clients** ; **Freesia & Ward 99** have **0 patients**. **Mitchell Plain** Hospital of Hope has **now closed**.
4. The Metro **mass fatality centre** has capacity has now closed.

Daily Operational Bed Status



WCDOH: Daily Operational Bed Status Dashboard as at 08/11/2021

Drainage Area	Filled Beds					BUR % for Designated Covid Beds(General Wards)	BUR % for Designated Covid Beds(Critical Care)
	Operational Beds		BUR %	COVID BUR %	% Covid patients		
Cape Town /Metro	5,032	4,551	90%	7%	2%	6%	29%
George	918	638	69%	8%	4%	8%	5%
Paarl	988	681	69%	13%	6%	13%	5%
Worcester	741	554	75%	26%	12%	25%	42%
SubTotal WCDOH	7,679	6,424	84%	10%	4%	9%	23%

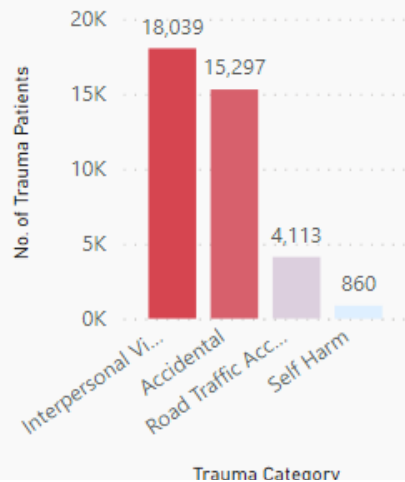
Excluding Specialised Hospitals e.g. Mowbray Maternity, Psychiatric Hospitals, etc

WC Sentinel Trauma Report

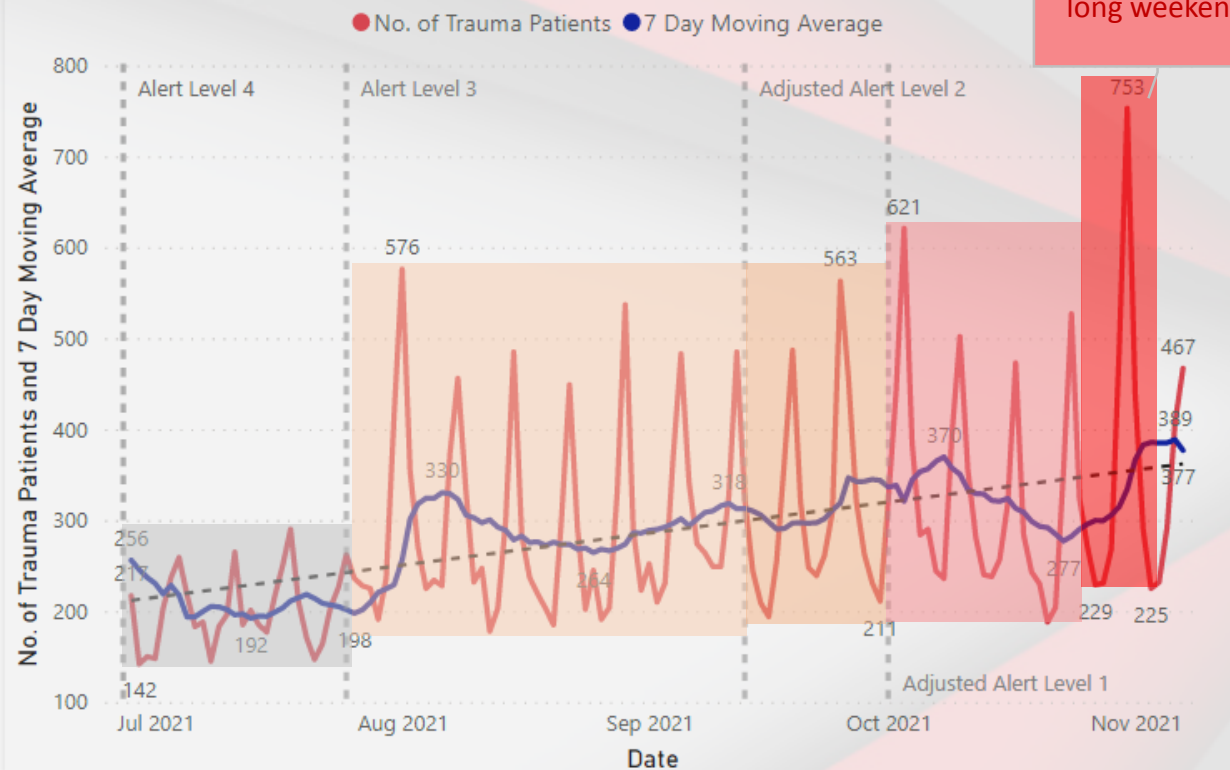
Source: **HECIS**

Overview of changes in recent trauma presentations (28 June 2021- 7 Nov 2021)

No. of Trauma Patients by Trauma Category



No. of Trauma Patients and 7 Day Moving Average by Date



Date Period	Lockdown Level	Alcohol Regulation	Curfew
28 June – 25 July 2021	Adjusted Level 4	Complete prohibition of sale	21:00-04:00
26 July - 12 September 2021	Adjusted Level 3	Offsite sale restriction Mon-Thurs 10:00-18:00	22:00-04:00
13 Sept – 30 Sept 2021	Adjusted Level 2	Offsite sale restriction Mon-Friday 10:00-18:00	23:00-04:00
>1 Oct 2021	Adjusted Level 1	No restrictions	00:00-04:00

With no current alcohol restrictions the previous end-of-month long weekend saw a new highest single day of trauma cases for the year (753 cases).

There were a total of 1681 trauma cases over the entire long weekend (Sat-Mon)

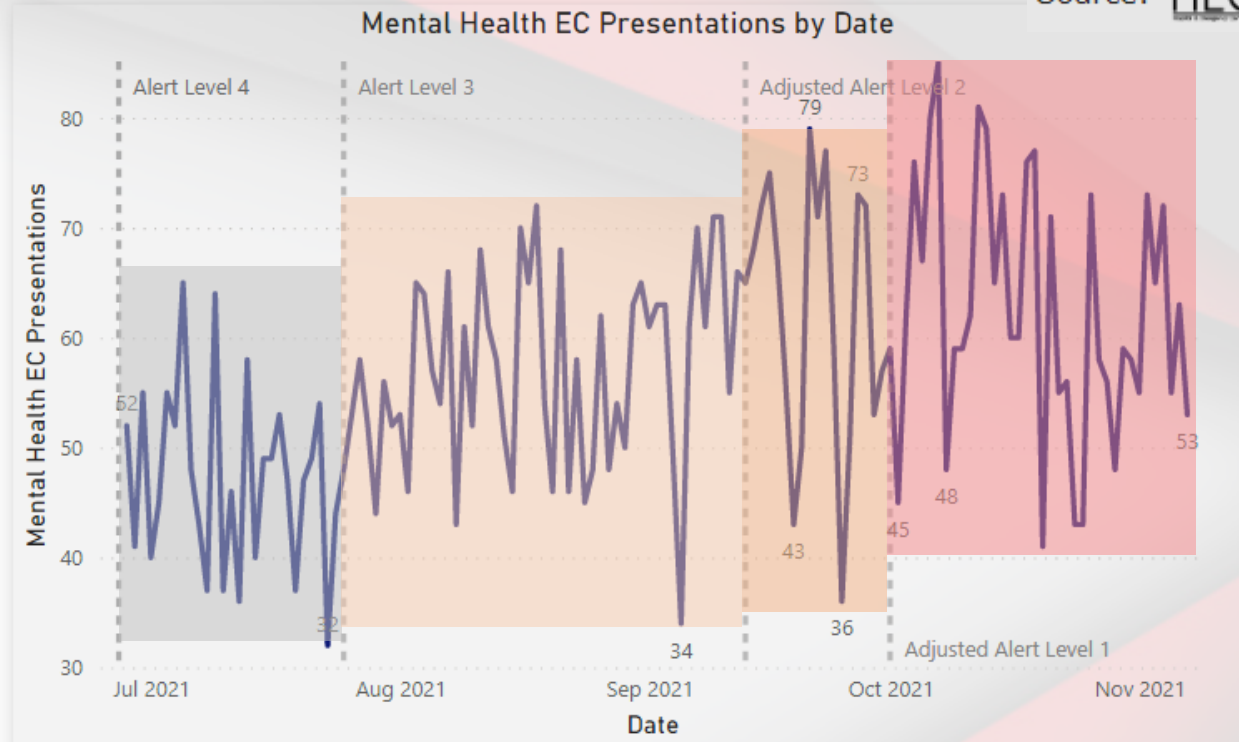
Overview of changes in mental health presentations to EC's (28 June 2021- 07 Nov 2021)

This graph reflects all acute Mental Health presentations that presented to 17 Emergency Centres across the province over the last few months.

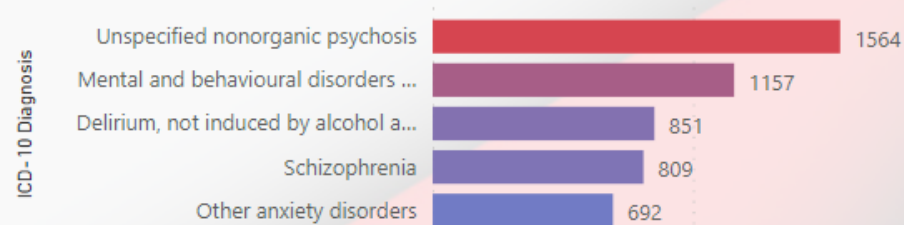
Date Period	Lockdown Level
28 June – 25 July 2021	Adjusted Level 4
26 July - 12 September 2021	Adjusted Level 3
13 Sept – 30 Sept 2021	Adjusted Level 2
>1 Oct 2021	Adjusted Level 1

This report shows a sample of 17 hospital emergency centres and their mental health patient numbers over time

Source: **HECTIS**



No. of Mental Health Patients by ICD- 10 Diagnosis



Mental Health presentations to Emergency Centres have recently been increasing with nonorganic psychosis and mental and behavioural disorders related to substances accounting for the highest number of presentations over the period.

Preparing the People Capacity – 4th Wave

5

Safeguard & protect the well-being of health care workers

Workforce Planning:

- Currently, appointed **850 staff additional for COVID** - Contract extended until end of Dec to ensure continued staff capacity on the health platform (in anticipation of the 4th wave).
- Appointed **1474 HCW and support staff** which includes **612 interns** for the Vaccination Drive
- A total of **796 applicants** can still be appointed, if needed

COVID: 8 less appointments

Vaccination Drive:

- 1 new appointments (HCW & Support);
- 3 less interns appointed

Vaccination Training:

- 6388** registered vaccinators on health platform
- 4290** trained vaccinators to date

40 new registered vaccinators

45 additionally trained vaccinators

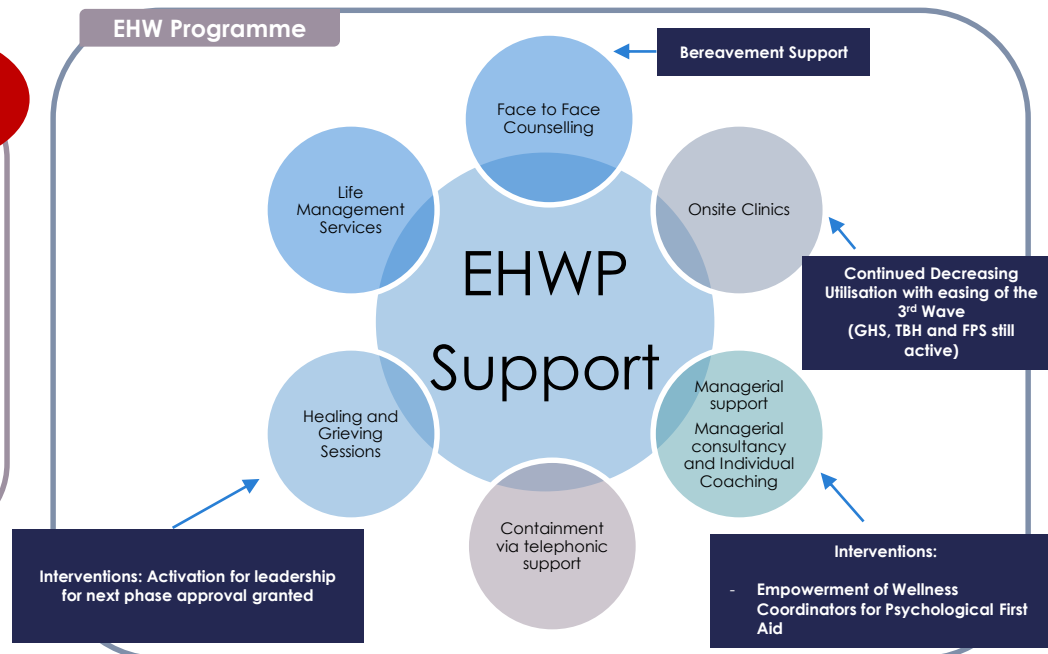
Well-being and Safety:

76,37%
vaccine
coverage

- PPE provision** well managed, stocked and distributed to staff
- Improved OHS Practices:** HIRAs for Metro in November; DoL inspections taking place with improvement reports (no contraventions reported)
- Leave Provisions** are in place to address staff fatigue - **encouraging rest but also Recognition to say Thank You to HCW.**
- Internal Health Comms Series and **Staff Wellbeing to build up resilience** and hope
- Mandatory Vaccination of all HCW** as a key policy position for the Department is being reviewed with expert input.



EHW Programme



DEPARTMENTAL OVERVIEW OF ONLY COVID-19 CASES AND DEATHS IN HEALTHCARE WORKERS (HCWs)

Totals as at 08 Nov 2021

Cumulative Infections

12,589



12,389

% Recovered

98.41%



190

% Died

1.51%

Active Cases

10

% Active

0.08%

Doctors



1265

Nurse



5,477

Radiographers



151

Pharmacists



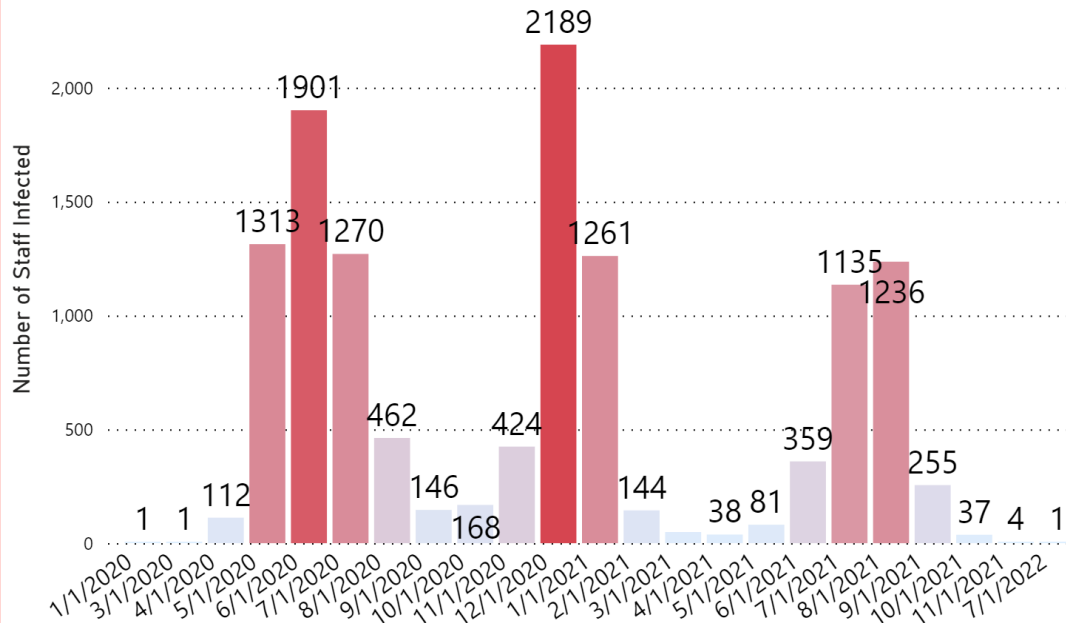
142

Other
categories

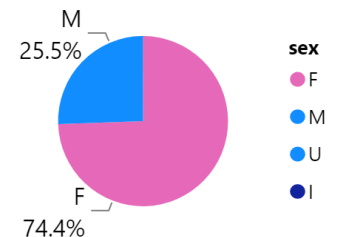


5,554

Total Staff Infected per Month

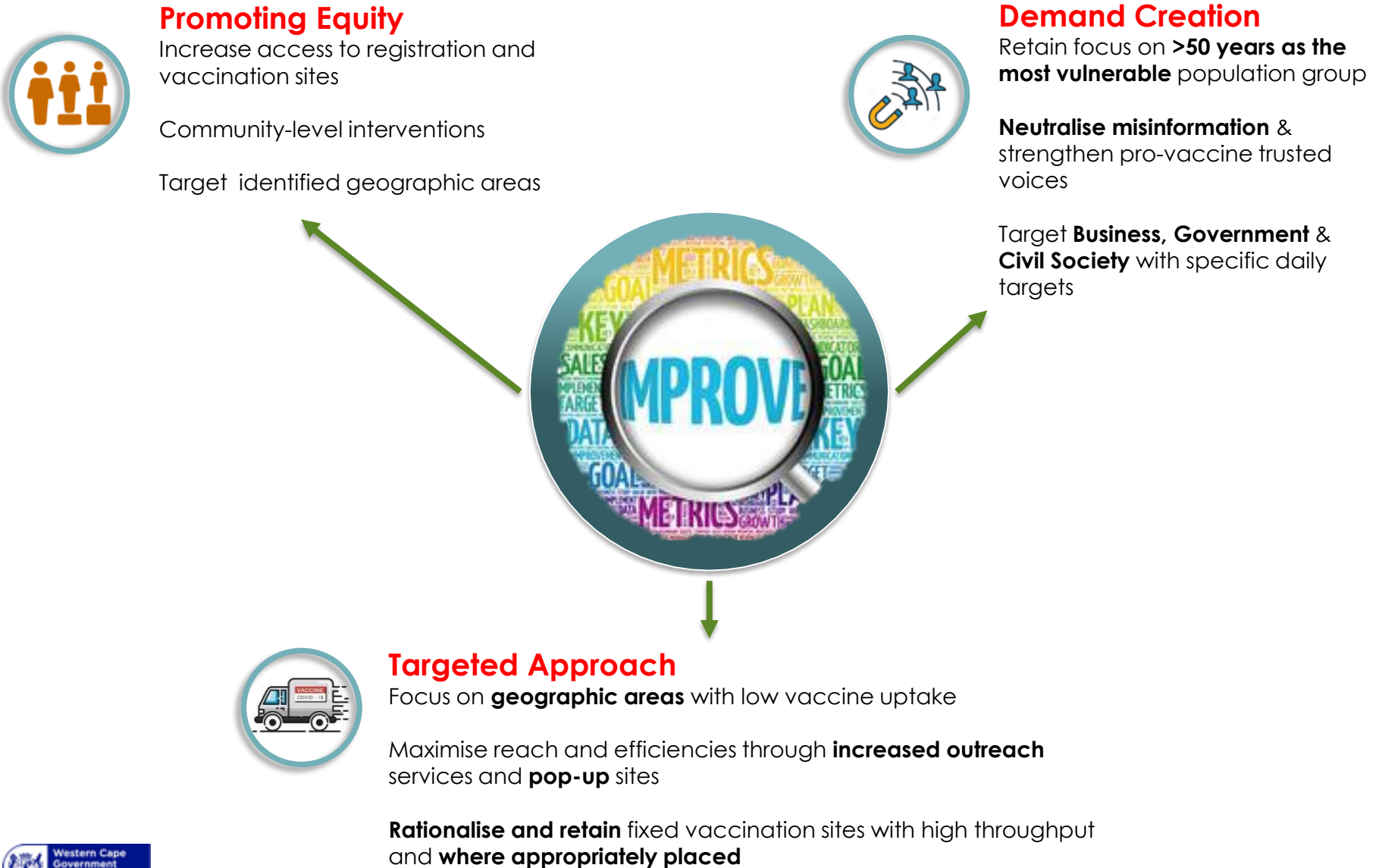


Gender Distribution



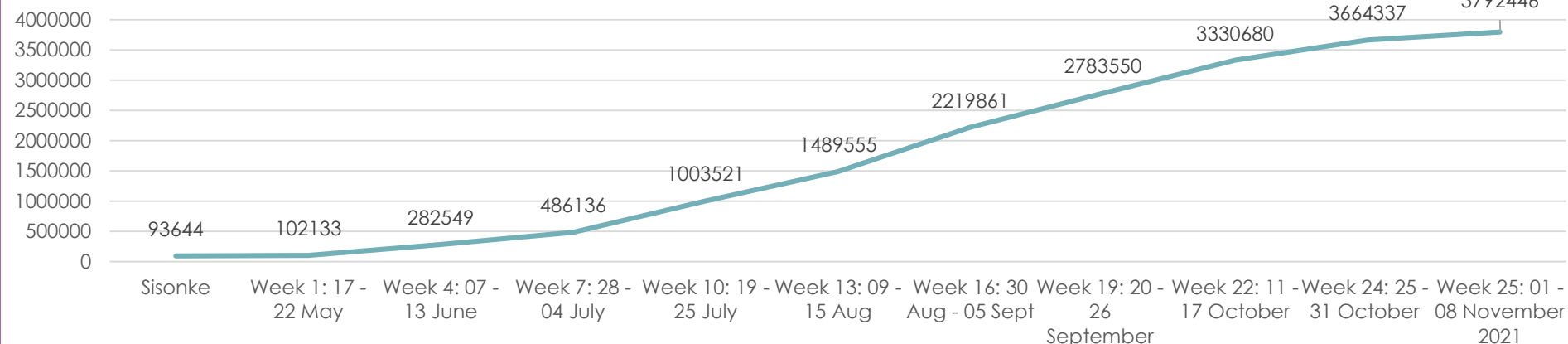
Vaccine Implementation update

Strategic Focus: Adjusting Aim

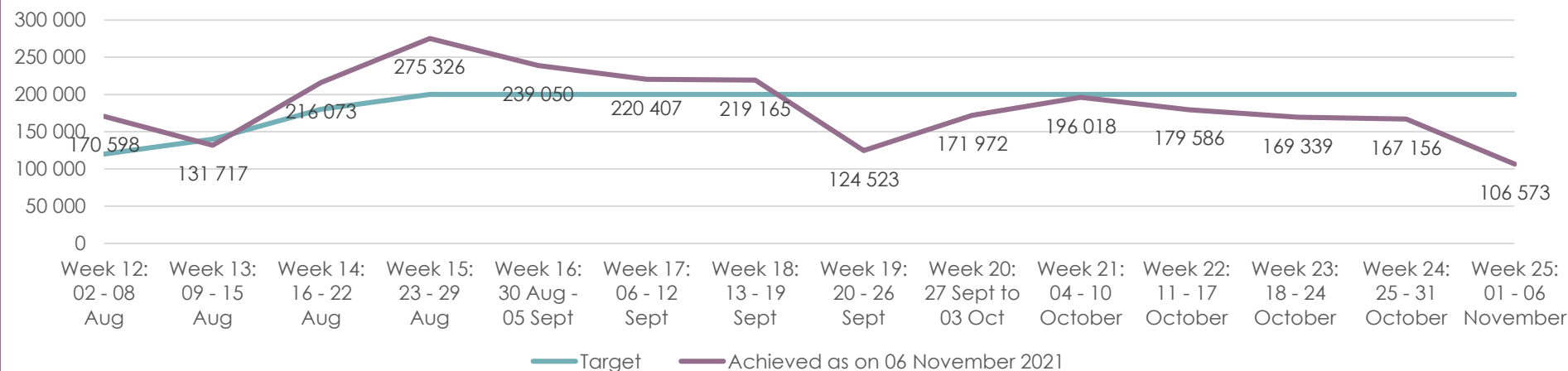


Vaccines Administered

Cumulative Vaccines Administered up to 08 November 2021



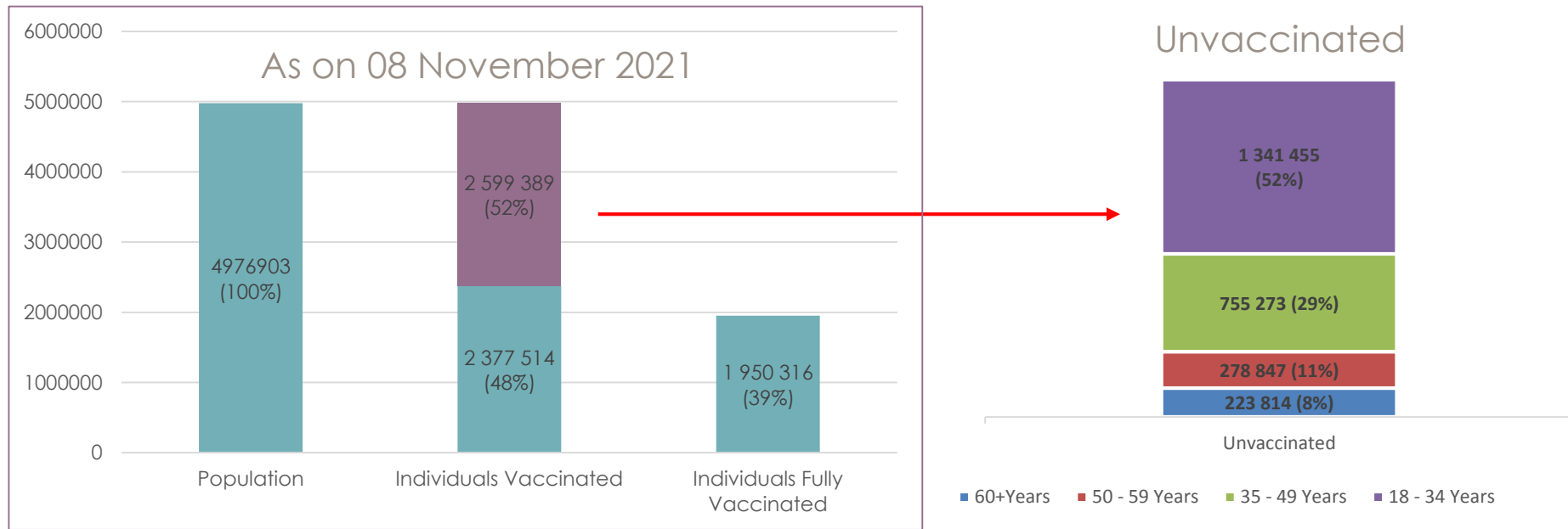
Vaccines Administered Against Weekly Targets (Week 12 - Week 25)



Source: NDoH Dashboard ([Microsoft Power BI](#)) accessed on 08 November @ 17:00

[Disclaimer: Data displayed in these graphs and tables only contains records captured on EVDS. Totals will be adjusted as back-capturing and data validation is done.]

Current status and the road ahead



As on 08 November 2021:

Total number of individuals (18 Years and older) vaccinated (at least one dose) = **2 377 514 = 48% of >18s**
(EVDS National Dashboard on 08 November 2021)

Total number of individuals (18 Years and older) fully vaccinated = **1 950 316 = 39% of >18s**
(EVDS National Dashboard on 08 November 2021)

Number of unvaccinated persons aged 18 years and older = **2 599 389**

Total number of children (aged 12 – 17 Years) Vaccinated = **36 554 (6%)**

Registration breakdown

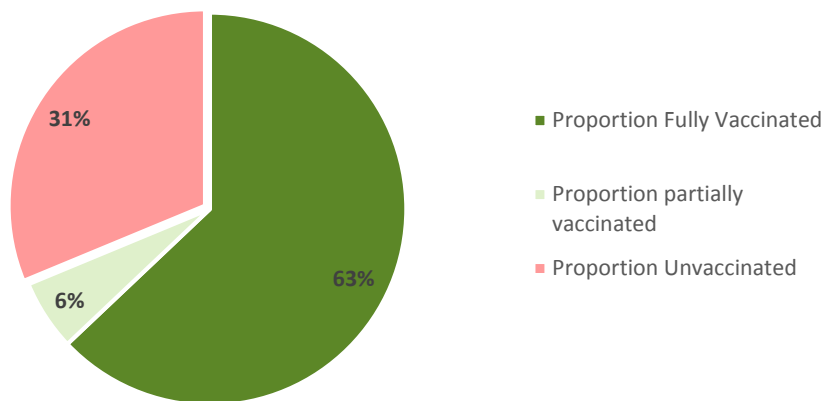
As on 08 November 2021, a total of **2 494 648** people in the Western Cape have registered on EVDS, equalling **45.45% of the total eligible population (>12 years)**.

Age Band	Total Registrations	% Individuals Registered
12 – 17 Years	53 096	8.22%
18 – 35 Years	761 149	37.09%
35 – 49 Years	770 304	50.94%
50 – 59 Years	393 969	57.72%
60 Years +	516 130	71.71%

Metro: Sub-district	Proportion >18 years as on 08 November 2021	Rural: District	Proportion >18 years as on 06 November 2021
Eastern	51.94%	Cape Winelands	51.39%
Khayelitsha	30.73%	Central Karoo	39.51%
Klipfontein	47.61%	Garden Route	50.73%
Mitchell's Plain	29.30%	Overberg	58.15%
Northern	52.25%	West Coast	47.67%
Southern	53.61%		
Tygerberg	44.26%		
Western	76.17%		

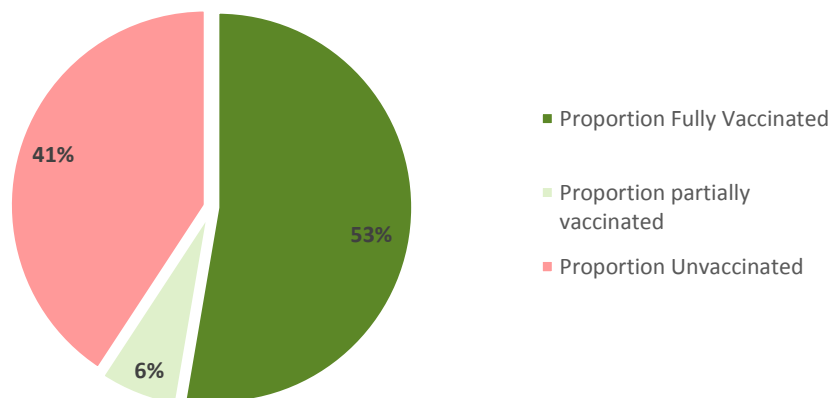
Vaccinations & Registrations: >50 Years

Vaccinations >60 Years as on 08 November 2021



EVDS Registrations	60+ Years
Cape Winelands	69.65%
Central Karoo	51.10%
Garden Route	80.46%
Overberg	101.95%
West Coast	86.16%
Eastern	68.85%
Khayelithsa	50.79%
Klipfontein	83.37%
Mitchell's Plain	46.31%
Northern	59.24%
Southern	77.72%
Tygerberg	61.07%
Western	83.86%
Western Cape	71.71%

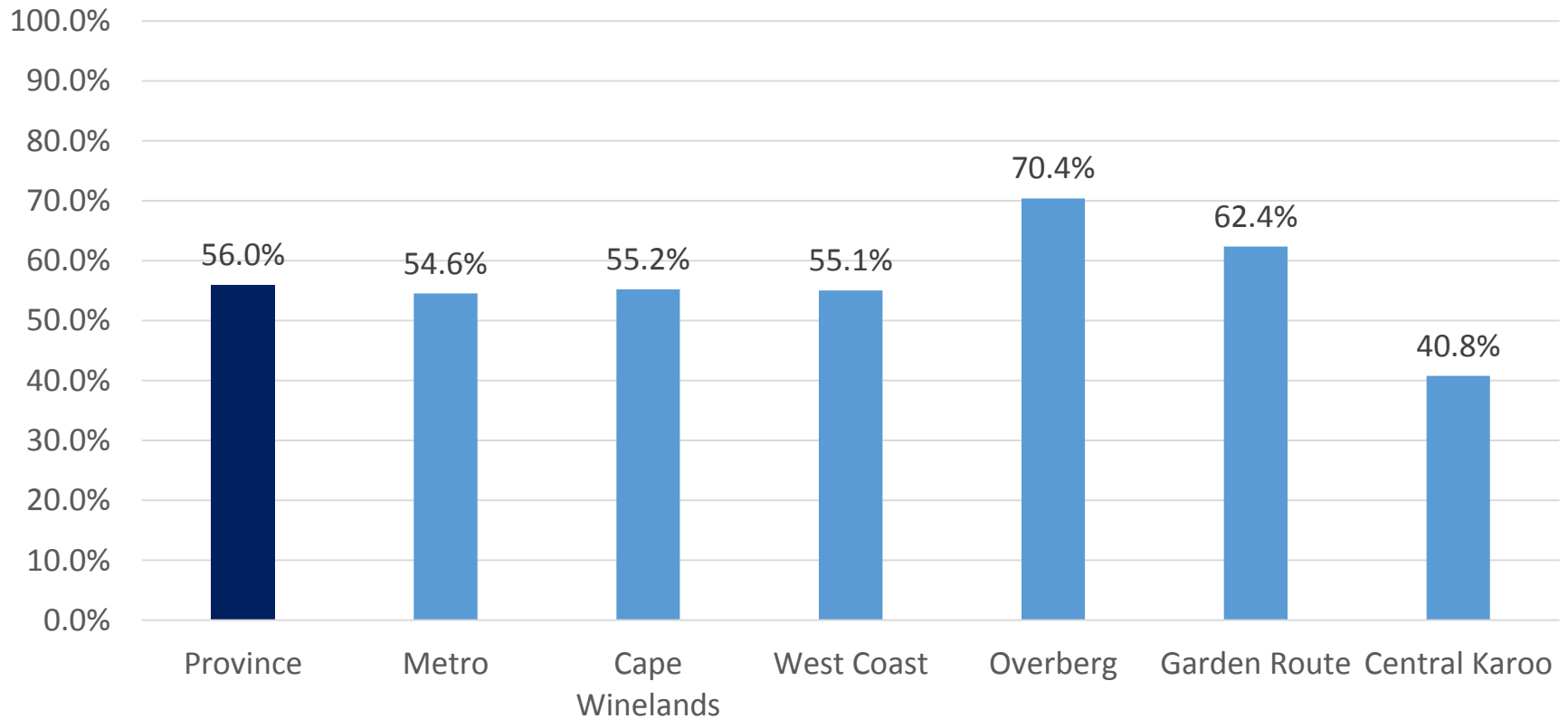
Vaccinations 50 - 59 Years as on 08 November 2021



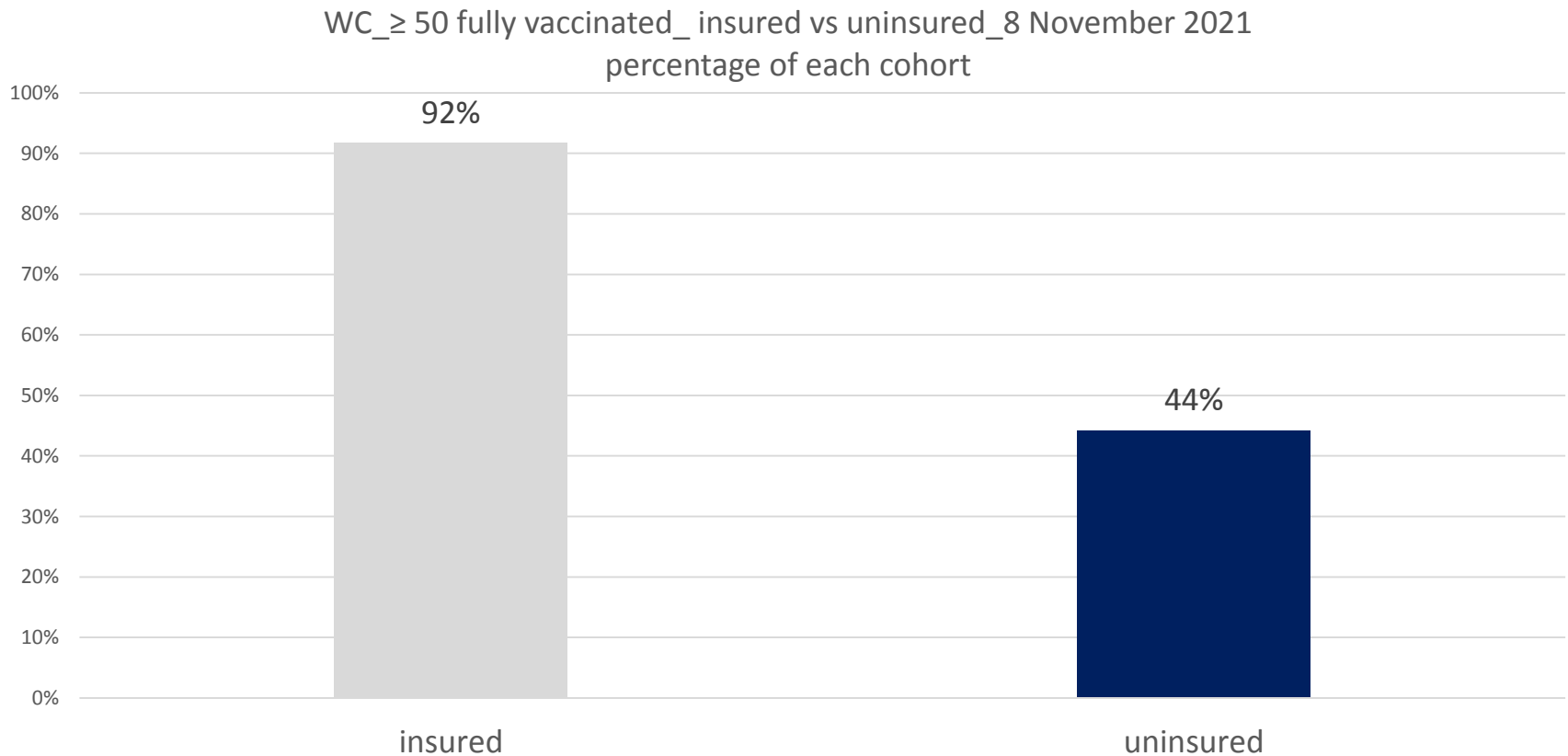
EVDS Registrations	50 - 59 Years
Cape Winelands	59.95%
Central Karoo	51.64%
Garden Route	60.56%
Overberg	65.45%
West Coast	56.22%
Eastern	58.86%
Khayelithsa	53.63%
Klipfontein	61.62%
Mitchell's Plain	36.26%
Northern	57.33%
Southern	56.68%
Tygerberg	51.74%
Western	78.40%
Western Cape	57.72%

Vaccinations ≥ 50 Fully Vaccinated

WC_districts ≥ 50 fully vaccinated_8 November 2021

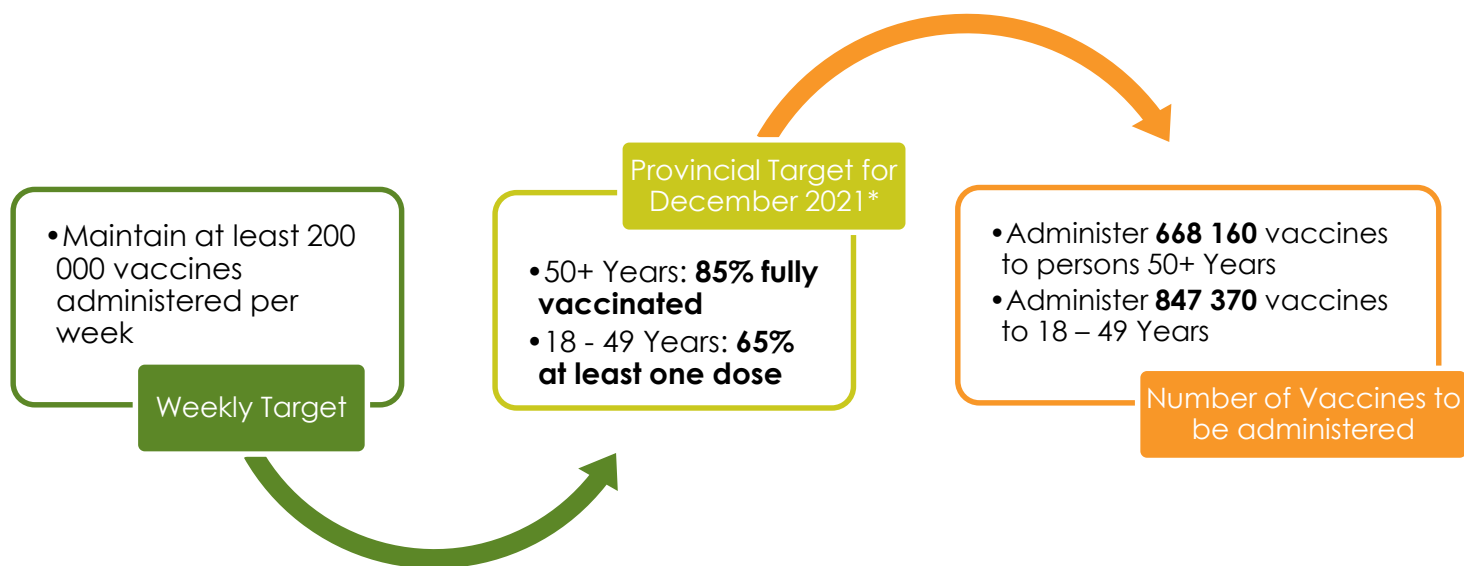


Vaccinations ≥ 50 Fully Vaccinated - Insured vs Uninsured



Provincial Targets up to December 2021

Age in years	Total Population	Proportion Fully Vaccinated (Received either 1 dose J&J or 2-dose Pfizer) as on 08 November 2021	Proportion Partially Vaccinated (One dose of two-dose regimen received) as on 08 November 2021	Proportion Unvaccinated as on 08 November 2021
60 Years +	723 160	63.49%	5.56%	30.95%
50 – 59 Years	684 149	52.69%	6.55%	40.76%
50 Years +	1 407 309	58.24%	6.04%	35.72%
35 – 49 Years	1 511 813	41.57%	8.47%	49.96%
18 – 34 Years	2 057 781	24.41%	10.40%	65.19%
18 - 49	3 569 594	31.68%	9.59%	58.74%
18 Years +	4 976 903	39.19%	8.58%	52.23%



Sisonke 2: Booster doses for HCWs (Circular H186 of 2021)

1. The Sisonke 2 programme will be conducted as a **Phase 3b implementation study** and healthcare workers will be required to provide informed consent indicating that they agree to participate in this phase of the study.
2. All healthcare workers who were vaccinated as part of Sisonke 1 (between 17 February and 16 May 2021) will be eligible to participate in Sisonke 2.
3. Healthcare workers will be offered a **booster dose of the J&J Vaccine**.
4. Implementation will commence on **10 November 2021** at selected vaccination sites.
5. This will ensure that healthcare workers are offered additional protection from severe Covid-19 disease in preparation of an anticipated 4th wave.
6. All eligible HCWs who opt out of Sisonke 2 as well as HCWs who were vaccinated with J&J after 17 May 2021, will be able to access a Pfizer booster dose within a few weeks once all necessary approvals have been granted by SAHPRA and NDoH.



Remarks on Vaccine Implementation

1. **Projected Weekly Throughput:** The province will need to increase weekly throughput to at least 235 000 vaccines administered per week to reach the targets that have been set for mid-December. Sufficient capacity is available for this but there is urgent need for concerted **demand creation and social mobilisation efforts.**
2. **Focus**
 - The primary focus will remain on ensuring that the most **vulnerable groups** are vaccinated (**>50yrs and people >18yrs with co-morbidities**).
 - NDOH is issuing **R100 grocery vouchers to clients 60+ years old who receive their 1st C-19 vaccine dose from 1st November 2021.** Vouchers will be issued on a first come first serve basis until the initial 26 000 vouchers have been issued across the country. Vouchers will only be issued for 1st dose vaccinations (either J&J or Pfizer) and will not be issued for the second Pfizer dose.
 - **Ensuring Equity in Access:** Ongoing efforts to remove barriers to access to ensure equitable access between males/ females, insured/ uninsured and more affluent/ poorer communities.
 - **Targeted Mobilisation:** Reaching everyone who has not got around to it yet, as well as everyone who is still unsure or anxious.

Communications

Vaccine access: Promote sites access and locations – central and local areas (“people that have not got around to it”)

8 November 2021



Look out for these pop-up vaccination sites

Vaccination Site	Time
St Mary's Catholic Church, Merryvale Avenue, Lentegeur	09:00 - 14:00
Woolworths, Kromboom Centre, Jan Smuts, Athlone	09:00 - 14:00
Charleville, Cnr Steve Biko and Valhalla, Gugulethu	09:00 - 14:00
Beautiful Gate, 73 Stock Rd Philippi	09:00 - 14:00
Lost City, Tafelsig	09:00 - 14:00
Church of Worshippers, Nomzamo	09:00 - 14:00
Spar, Khayelitsha	09:00 - 14:00
Hope Building, Blikkiesdorp	09:00 - 14:00
Shoprite, Paarl	07:30 - 16:30

Vaccinate today! Let's do this



5 November 2021

SATURDAY VACCINATION SITES: 6 NOVEMBER 2021

Vaccination sites in the Metro

SouthernWestern

- DP Marais 09:00 - 13:00
- UCT Community of Hope 09:00 - 13:00
- Saxon Sea Community Hall 08:00 - 12:00

Klipfontein/Mitchells Plain

- Ikwezi Hall, Gugulethu 09:00 - 14:00
- Beaconsvale Frail Care 09:00 - 14:00
- Athlone Stadium 09:00 - 14:00

Khayelitsha/Eastern

- Kleinvel Recreational Hall 08:00 - 14:00
- Site B CDC 08:00 - 14:00
- Nomzamo CDC 08:00 - 14:00
- Somerset West Town Hall 08:30 - 12:30
- Mfuleni Milton Martin Society Extension 6 09:00 - 14:00
- Khayelitsha Town 2 Mural Launch Lansdowne Road 09:00 - 14:00

Northern/Tygerberg

- Goodwood Civic Centre 08:00 - 11:30
- Durbanville Town Hall 08:00 - 11:30

Vaccination sites Rural

Cape Winelands

- TC Newman CDC 08:00 - 13:00

West Coast

- Kathy Johnson Hall, Clanwilliam 08:00 - 13:00
- Vredendal Central Clinic 09:00 - 14:00
- Riebeek Kasteel Community Hall 08:00 - 12:00

Overberg

- Mount Pleasant Sports Grounds 09:00 - 14:00

Garden Route

- Harry Cornay Hospital 09:00 - 14:00

*Additional weekend sites will be considered, on an ongoing basis, as this is dependent on vaccine supplies.

Vaccine hesitancy – Ask a Doctor – “people with concerns” (face to face access to trusted information source)





Addressing misinformation and “anti-vaccine” sentiments

COVID-19 VACCINES DEBUNKING THE MYTHS

FALSE ❌	FACT ✅
The vaccine was rushed and is not safe	Expert researchers across the world worked together and took no safety shortcuts. Existing safe technology was used to create the vaccine. Over 1.84 billion people worldwide have already been safely vaccinated.
It changes your DNA	It is impossible for the vaccine to change your DNA. The vaccine does not remain in your body but gets broken down and discarded by your body.
The vaccine can give you COVID-19	It is impossible. It does not contain live COVID-19 virus.
It causes severe side effects or death	Side effects like headache, a sore arm, feeling tired, or mild flu symptoms are normal. This means the vaccine is working and your body's immune system is responding by making antibodies.
It can make women infertile	There is no evidence that the vaccine causes infertility or any other long-term side effects.

Everyone over 18 can go to the nearest vaccination site to register and get their vaccine. Bring an unvaccinated family member with you.

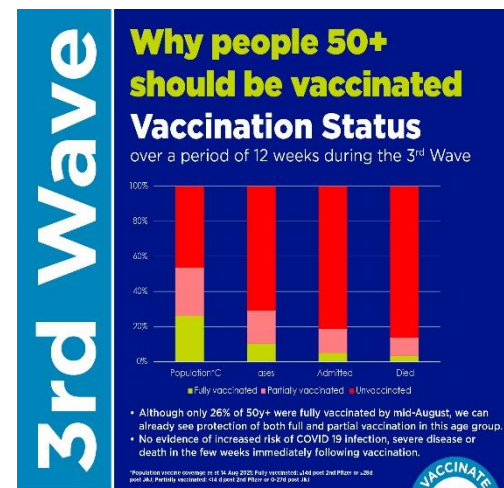
Do you have high blood pressure or diabetes? The vaccine is safe for people with high blood pressure and diabetes. Get vaccinated immediately to protect yourself against getting severe COVID-19.

Vaccinate

So you can be around for the people you love

- 1 Get the facts [Learn more](#)
- 2 What to expect [Learn more](#)
- 3 How to register [Register now](#)



Over 50 years?

October 2021

You are at high risk. Get vaccinated now to protect yourself. During the third wave, people aged 50 years and older made up 30% of cases, 60% of admissions, and 83% of deaths due to COVID-19*.

Age 50+ 30% of cases
Age 50+ 60% of admissions
Age 50+ 83% of deaths

*Over a period of 12 weeks during the 3rd wave.



Risk mitigation: Save our Summer

SAVE YOUR SUMMER



If the majority of us are vaccinated with Covid-19 vaccines by December, we will have a much safer summer.



Vaccination is the best way of saving ourselves from illness, death and ongoing disruptions of our lives and work.

- Go for vaccination as a matter of urgency
- Continue to wear a mask (even when vaccinated)
- Ensure open windows, fresh air and good ventilation (even when vaccinated)
- When you have symptoms, stay home

Please call 0860 142 142 for more information on weekly sites or visit our Facebook page <https://www.facebook.com/WCGHealth/>
Also watch local media and municipal pages for details



Western Cape
Government
FOR YOU

Health



Conclusions

Concluding remarks

1. We **are in-between waves**. We urge everyone to **adhere to protective behaviours, to contain** spread over **the coming weeks and months**, in expectation of a **4th wave**.
2. We are finalising a **tailored step-wise health** and **societal response** and to trigger appropriate responses **to detect, avert** and contain **a 4th wave**.
3. Our biggest weapon **against a big impact 4th wave** is **vaccination (especially for >50yr olds)**. We have the capacity to **administer 40 000 vaccines/ day**, but now require a massive **whole of society effort** to **generate increased targeted demand**.
4. We need to scale our multi-sector **mobilisation efforts** to reach everyone that has **not yet been vaccinated**, in a **targeted and intentional manner**, to **restore our economy**, and **normalise the health system & societal functioning**.

Thank you

K Cloete