



Western Cape
Government

FOR YOU

Health

Digital Press Conference

Update on COVID-19 and Vaccination Roll-out

Dr K Cloete

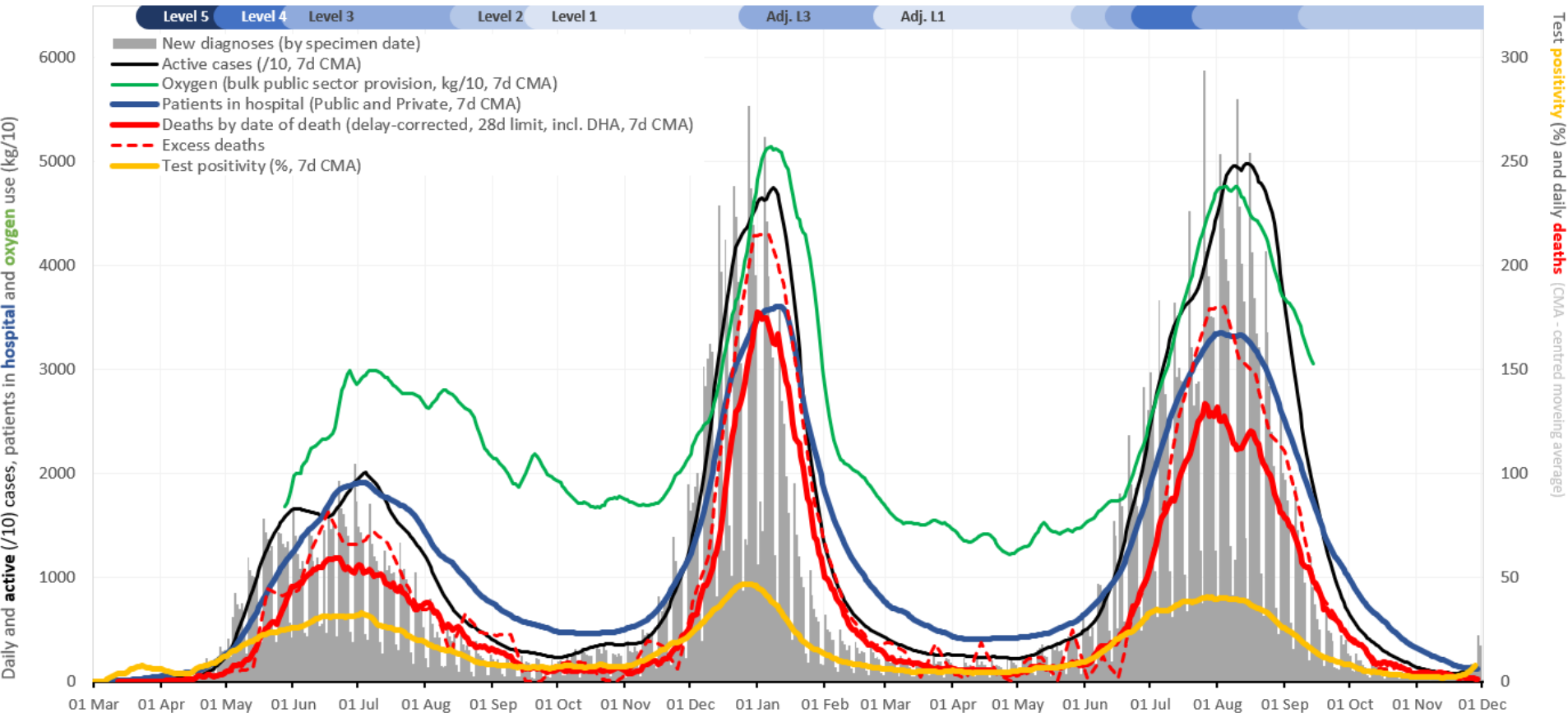
2 December 2021

Overview

1. COVID Surveillance & Response Update
2. COVID-19 fourth wave response
3. The current status of the health platform
4. Vaccine Implementation update
5. Key messages
6. Conclusions

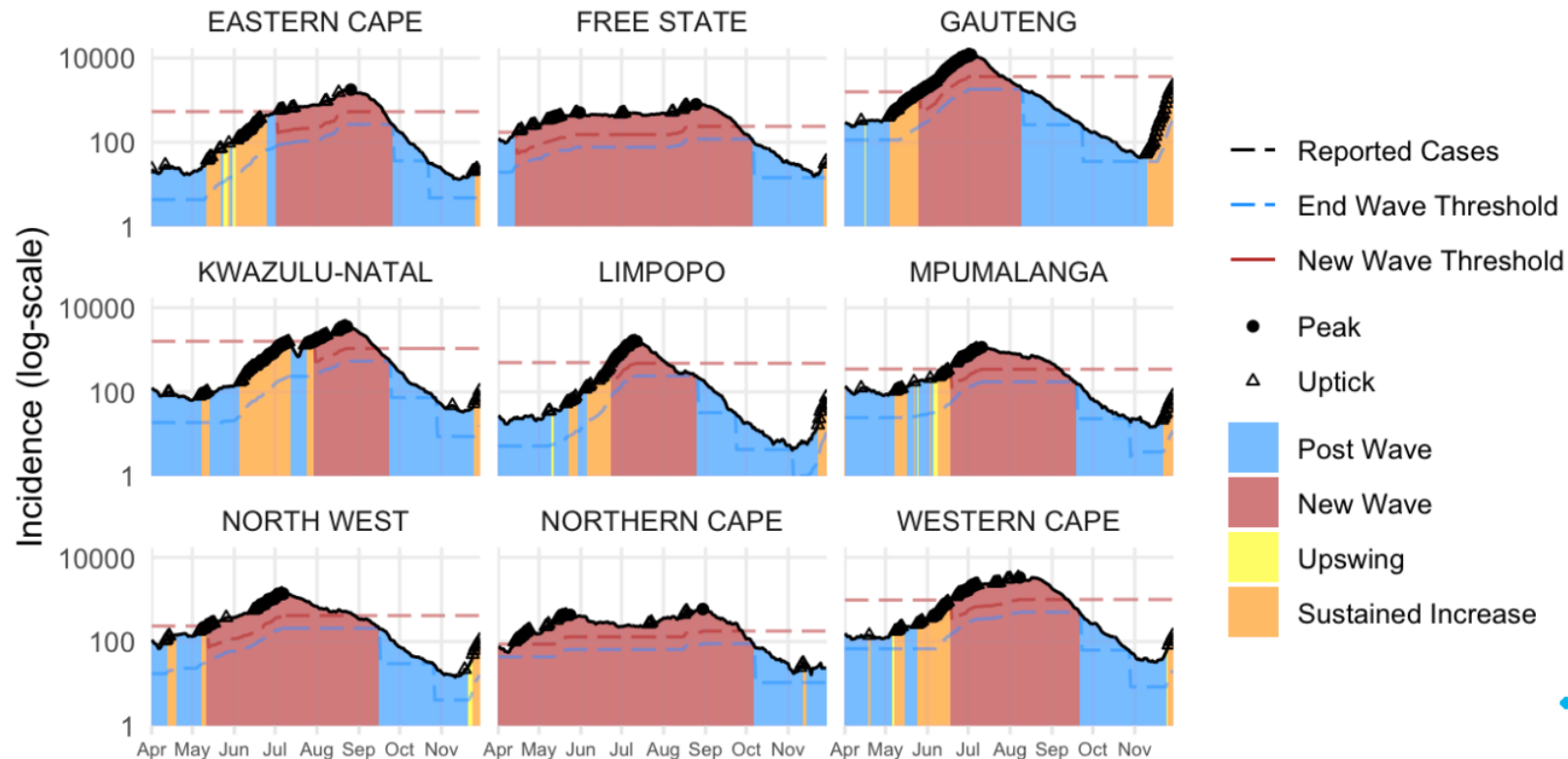
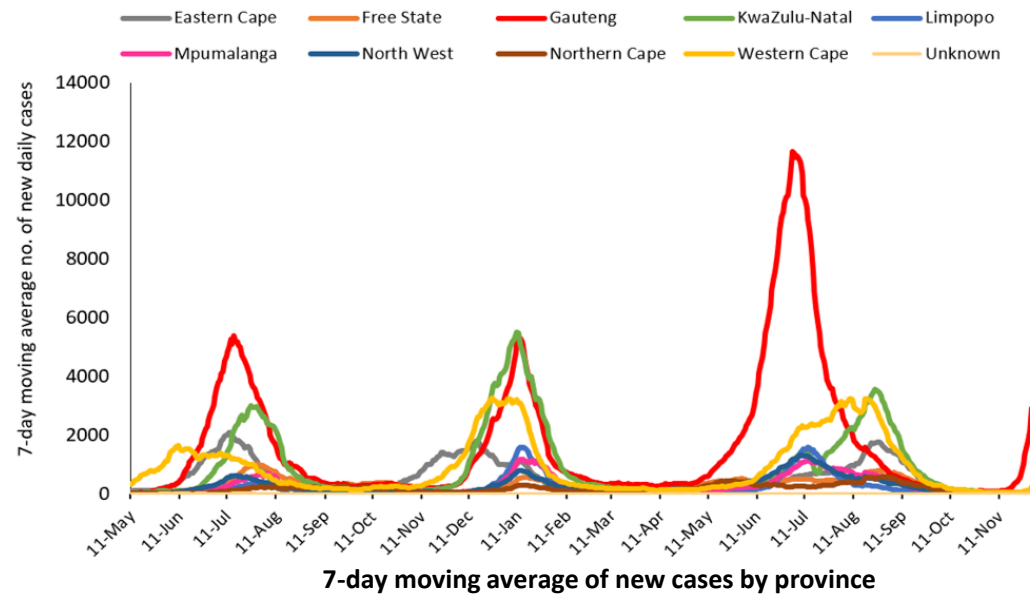
COVID Surveillance & Response Update

Integrated testing, case, hospitalisation and mortality trends



National trends

- Steep increase in Gauteng continues
- All provinces, except Northern Cape, now showing a sustained increase in cases





Provincial Resurgence Overview

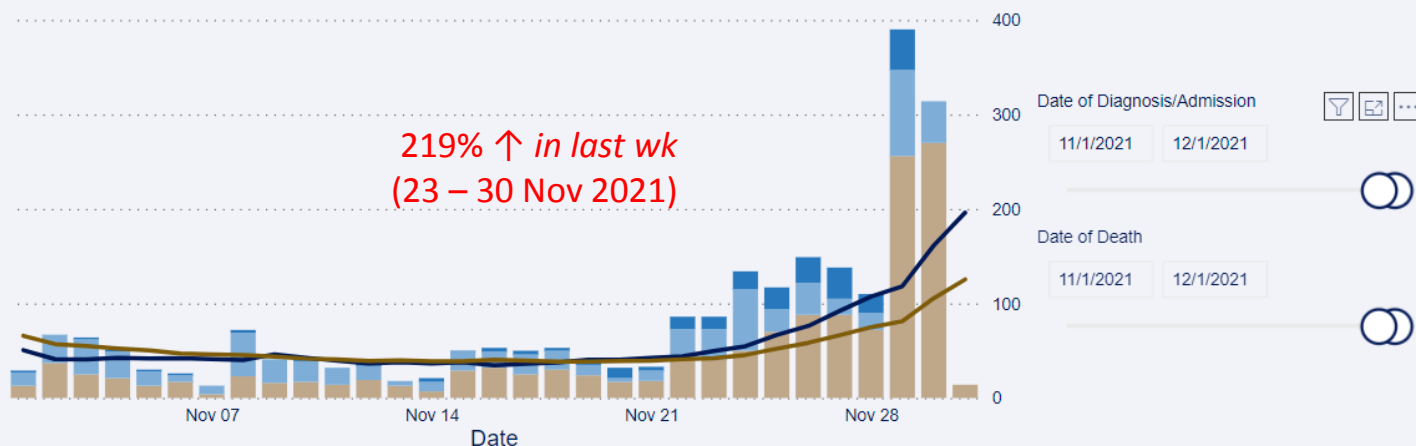


Health Impact Assessment
WC Department of Health
Last Updated:

12/1/2021 9:01:16 PM

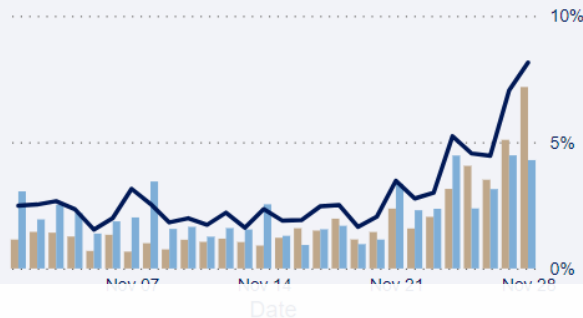
No. of Cases, 7 Day Moving Average and 14 Day Moving Average by Date and Sector

Sector ● Private/Other ● Public ● Unknown — 7 Day Moving Average — 14 Day Moving Average



Proportion Positive and Overall Positivity by Date and Sector (*Provincial Only)

Sector ● Private/Other ● Public — Overall Positivity



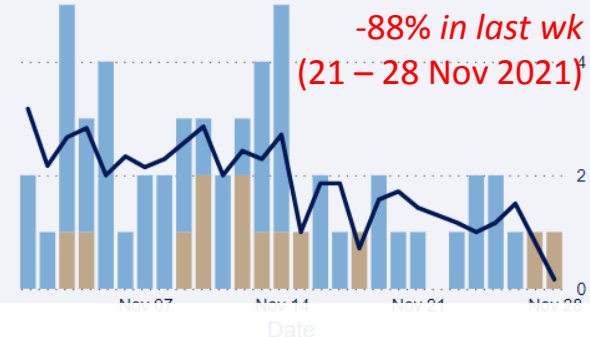
No. of New Admissions and 7 Day MA by Date and Sector

Sector ● Private ● Public — 7 Day MA



No. of Deaths and 7 Day MA by Date and Sector

Sector ● Private/Other ● Public — 7 Day MA

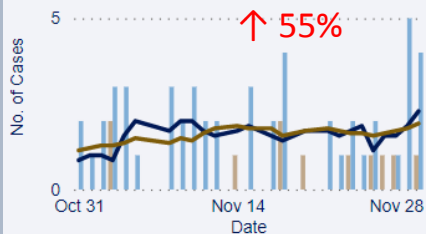
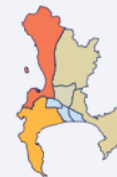


Provincial Overview

- We are now seeing **clear increases** in the number of daily new cases with on average **200 new diagnoses per day**.
- The **proportion positive** has increased to an average of **8.2%**.
- **Admissions** are showing signs of an **early increase** with 11 admissions per day. Deaths remain low with <2 deaths per day.

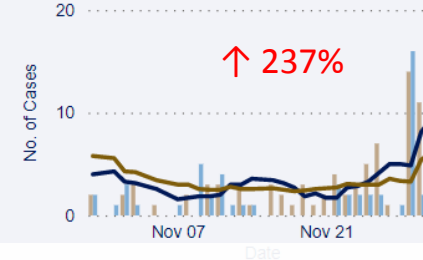
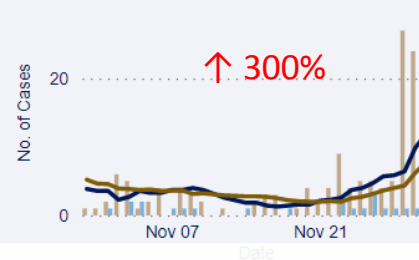
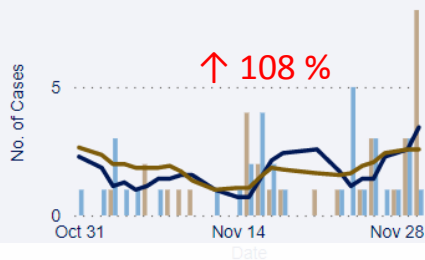
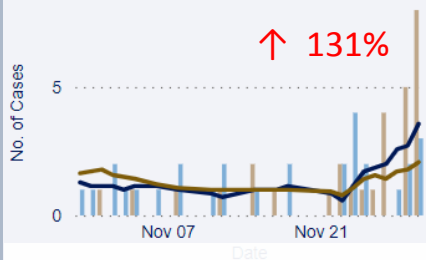
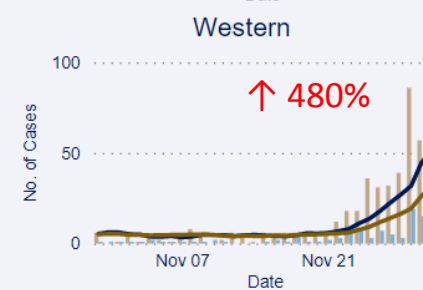
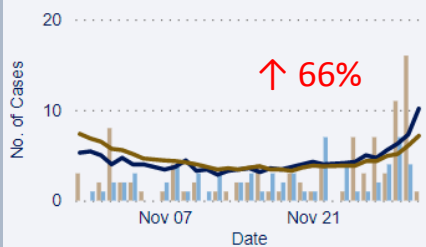
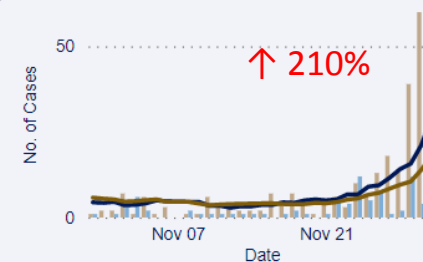
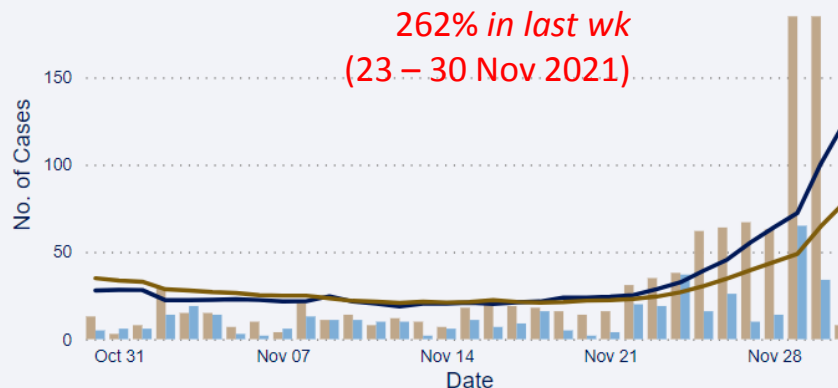


Metro Resurgence Overview



Metro Overview: No. of Cases with 7 and 14 Day MA by Date and by sector

Sector Private/Other Public 7 Day Moving Average 14 Day Moving Average

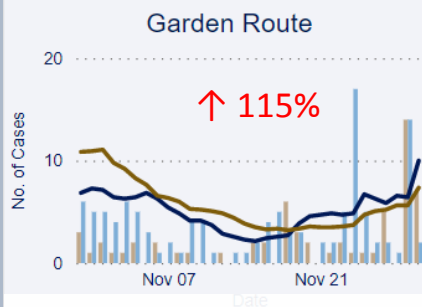
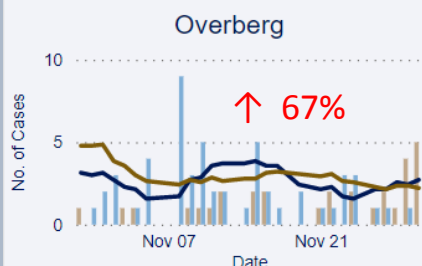
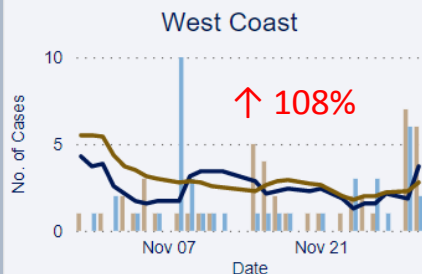
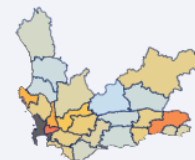


Metro Overview

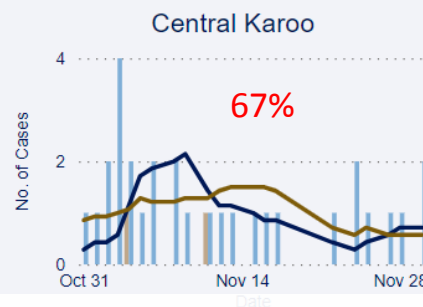
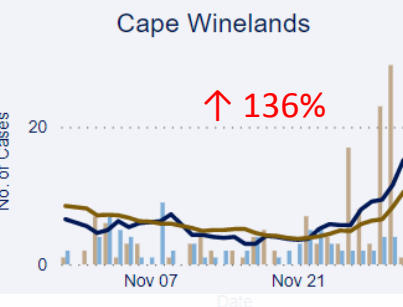
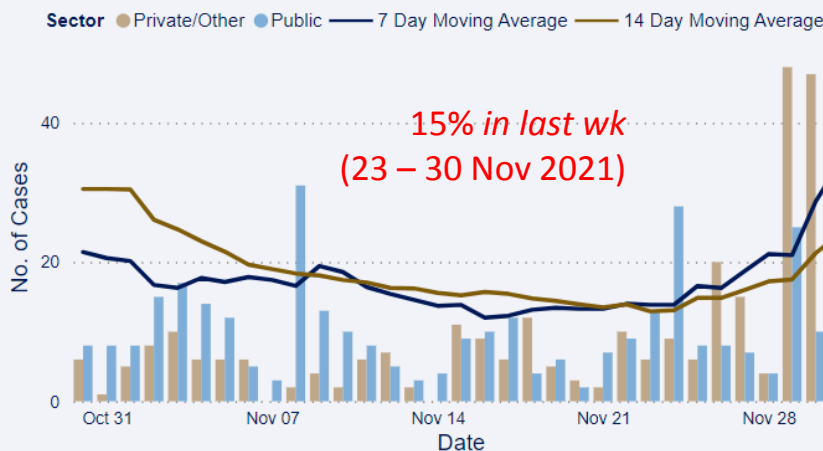
- Overall, there is a 262% week on week increase in cases in the Metro, but comparing to very small absolute numbers in previous week.
- All sub-districts are starting to see increases, particularly Northern, Southern, Western, Tygerberg and Klipfontein.



Rural Resurgence Overview



Rural Overview: No. of Cases with 7 and 14 Day MA by Date and by sector



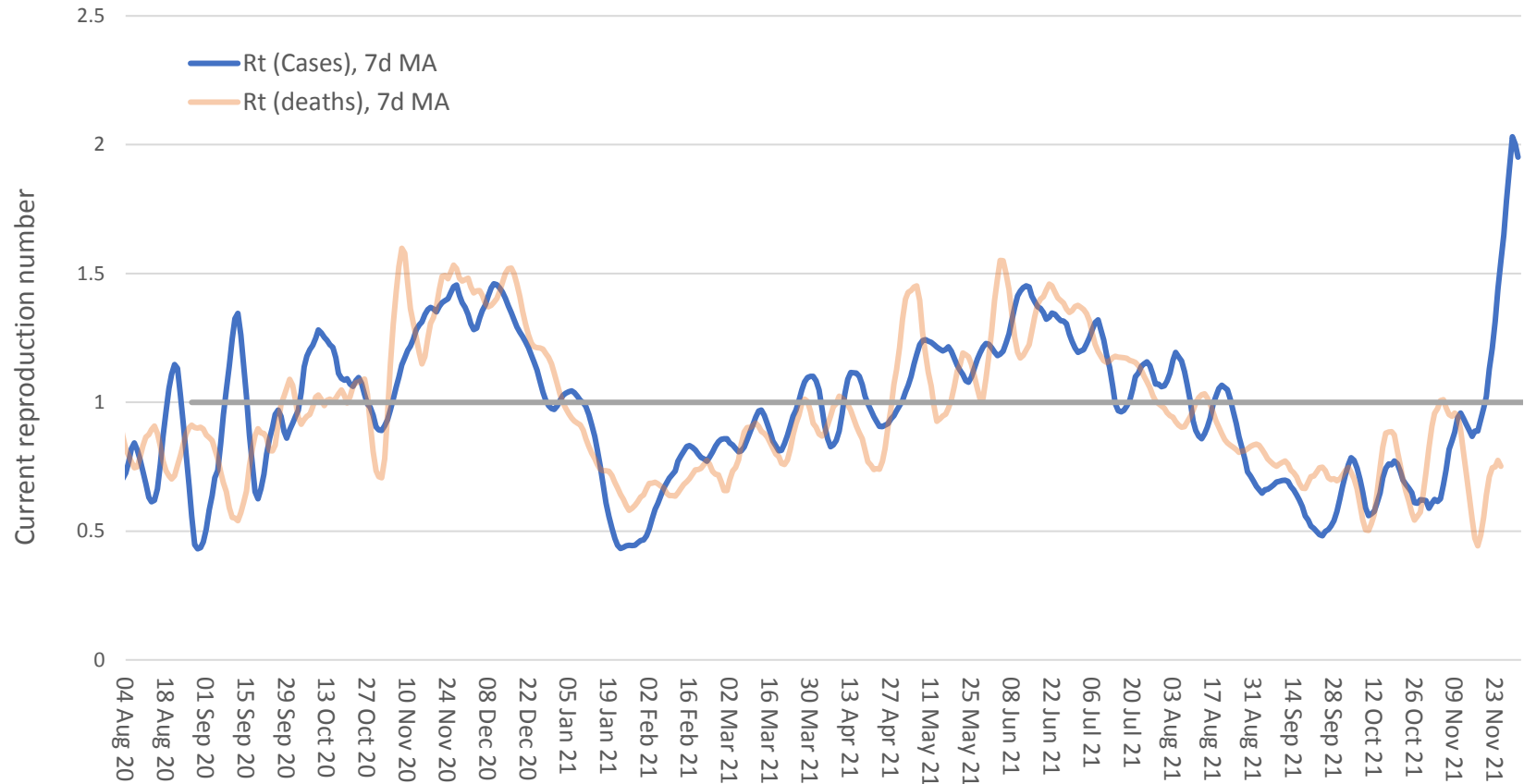
No. of Cases by Rural Subdistrict

District	Subdistrict	No. of Cases
Cape Winelands	Stellenbosch	89
Garden Route	George	77
Cape Winelands	Drakenstein	58
West Coast	Saldanha Bay	54
Cape Winelands	Breede Valley	40
Cape Winelands	Langeberg	30
Garden Route	Mossel Bay	28
Overberg	Theewaterskloof	27
Garden Route	Oudtshoorn	26
West Coast	Swartland	26
Central Karoo	Beaufort West	25
Overberg	Overstrand	25
Overberg	Swellendam	20
Cape Winelands	Witzenberg	19
Garden Route	Bitou	18
Garden Route	Knysna	18
Overberg	Cape Agulhas	12
West Coast	Matzikama	11
Central Karoo	Prince Albert	7
Garden Route	Hessequa	7
Garden Route	Kannaland	6
West Coast	Bergervier	5
West Coast	Cederberg	5
Central Karoo	Laingsburg	1
Total		634

Rural Overview

- Rural districts, particularly Garden Route, Cape Winelands, are also starting to see increases.

Reproduction number

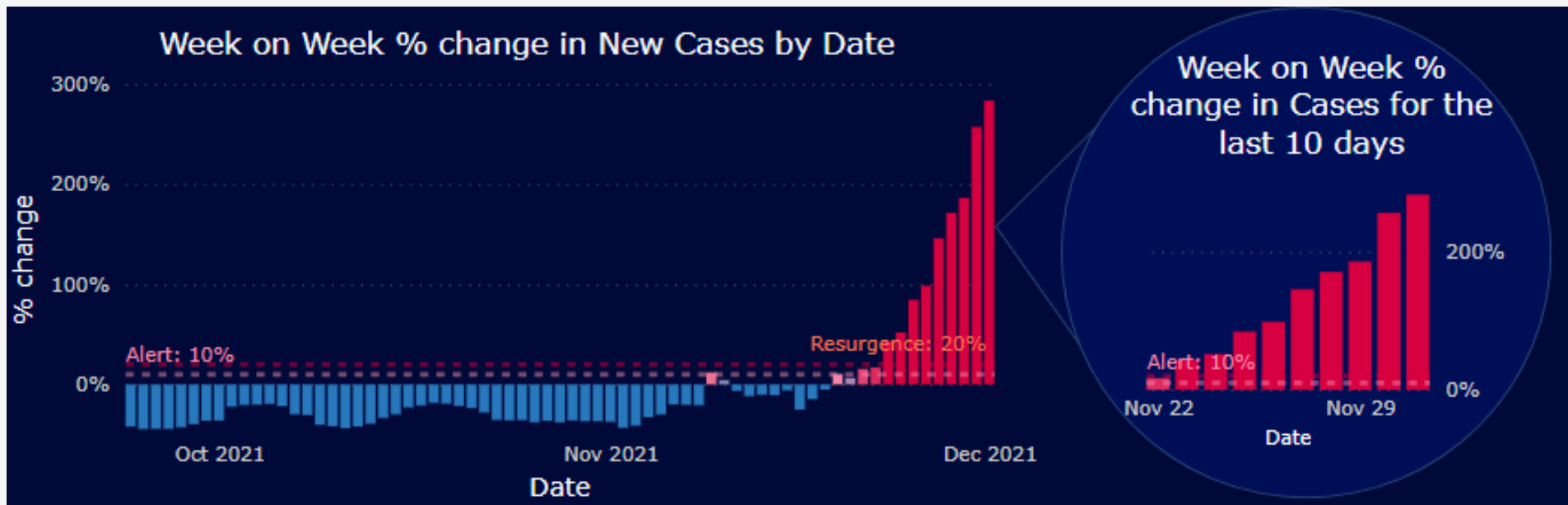
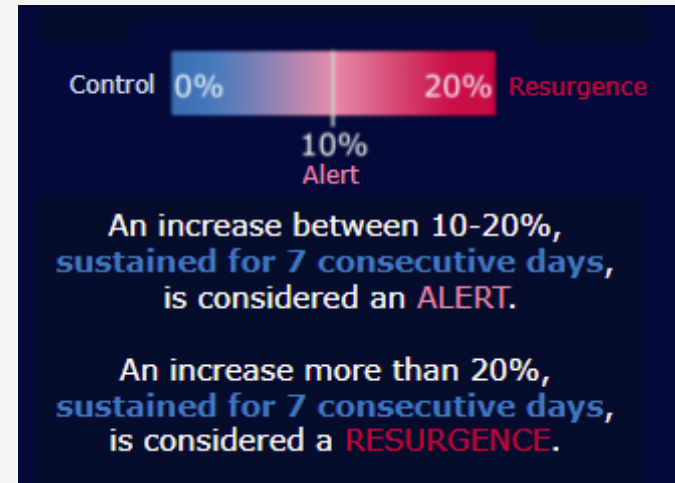


Reproduction number is durably >1 , has risen quickly, and is higher than early in 2nd or 3rd waves

Monitoring for resurgence

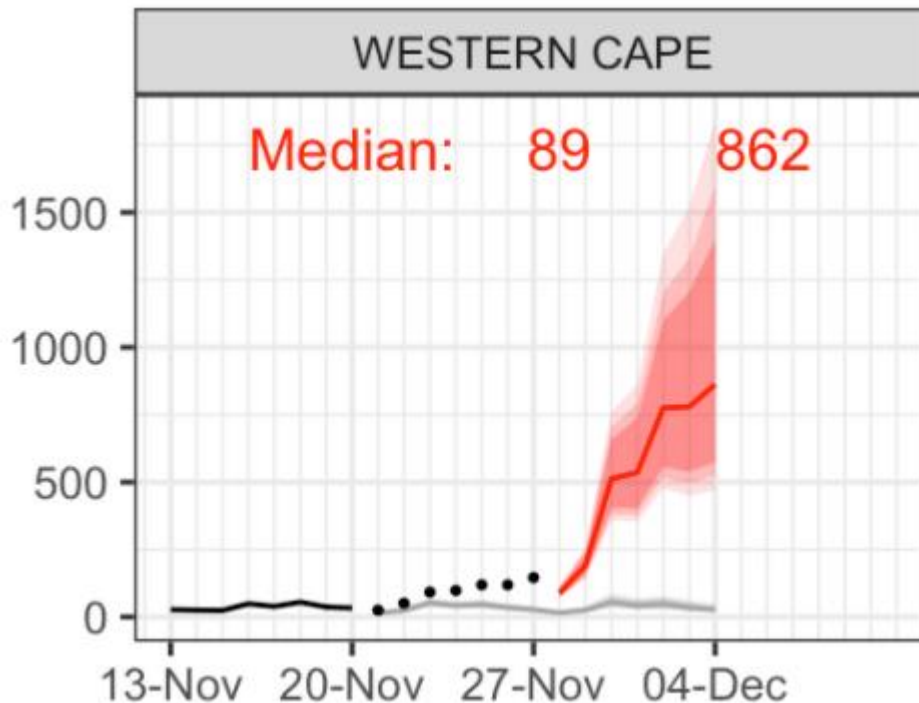
Week on week percent change in the 7d moving average of new cases has been **>20% for more than a week** indicating that we have officially **entered a resurgence**.

Although case numbers remain relatively low, **the steep increase is concerning**, and we **advise caution** as we await more **details of the impact of omicron**.



Short term predictions from SACMC – new cases

Actual cases higher than expected for the past week although numbers still relatively low.
A very large increase in absolute number of cases is expected for the coming week.



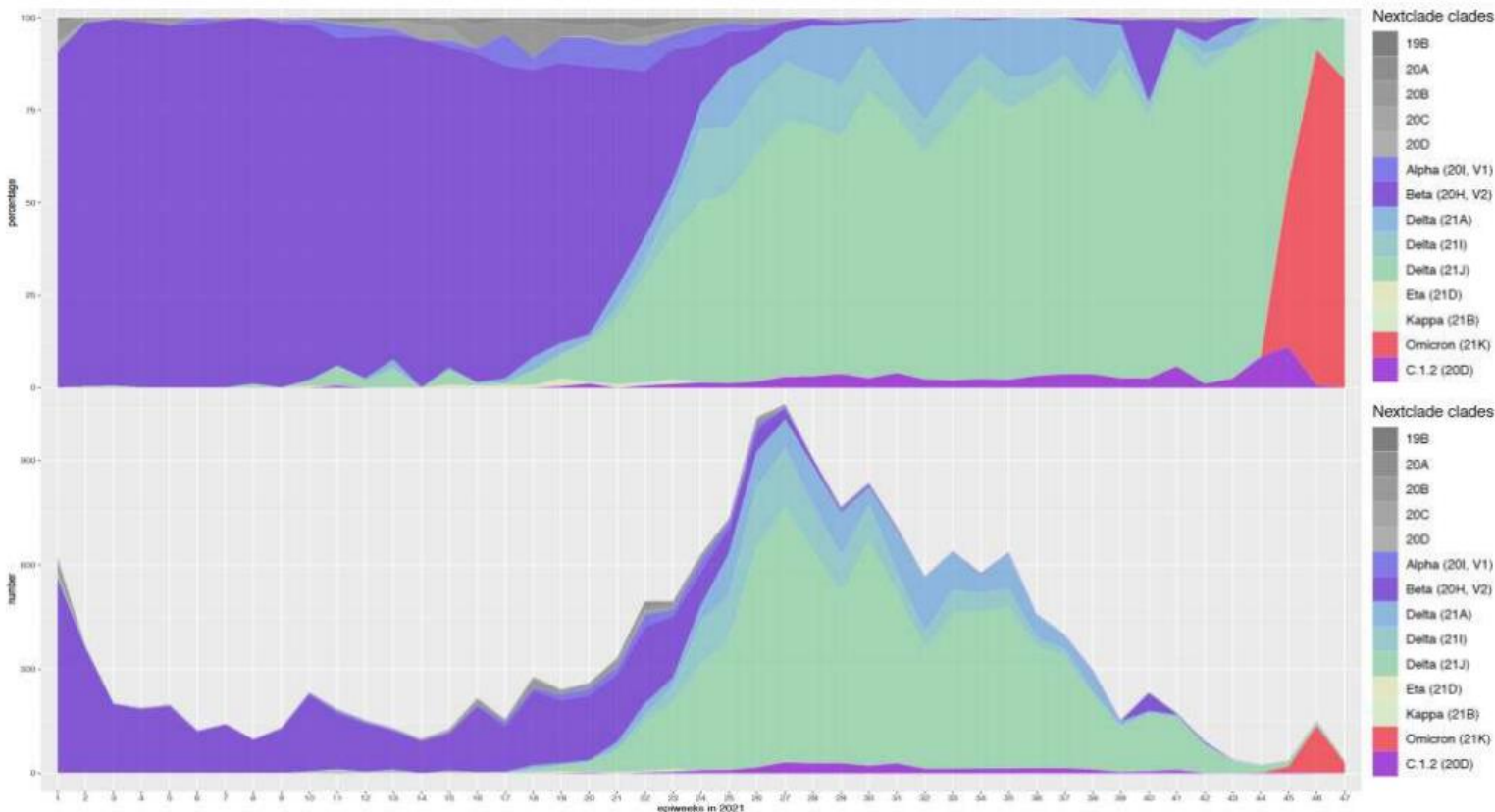
Black line:
previous cases

Grey line:
forecast for this week

Dots:
actual cases

Red line:
Prediction for next week

Proportion and number of clades by epiweek in South Africa, 2021 (N= 17 315)



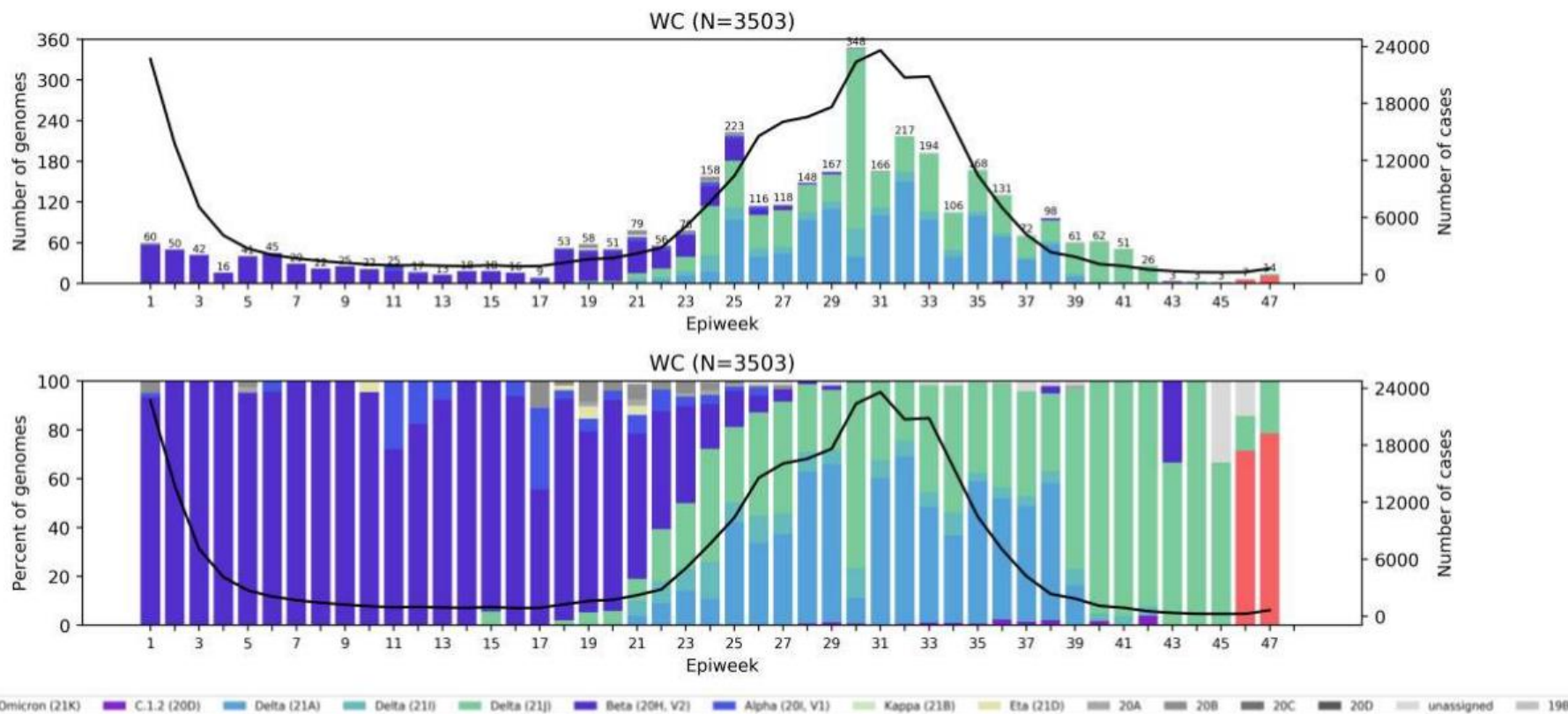
Sequencing data
ending epi week 47
(ending 27
November 2021)

Currently in epi
week 48 (ending 4
December 2021)

**Delta dominated South Africa's third wave with >90% frequency in October, with C.1.2 detection remaining <4%.
Omicron dominates November sequencing data but sequencing is ongoing to determine its true prevalence.**

Omicron identified in Gauteng, KZN, WC, Mpumalanga & Limpopo. Awaiting sequence data for other provinces.

Western Cape Province, 2021, n = 503



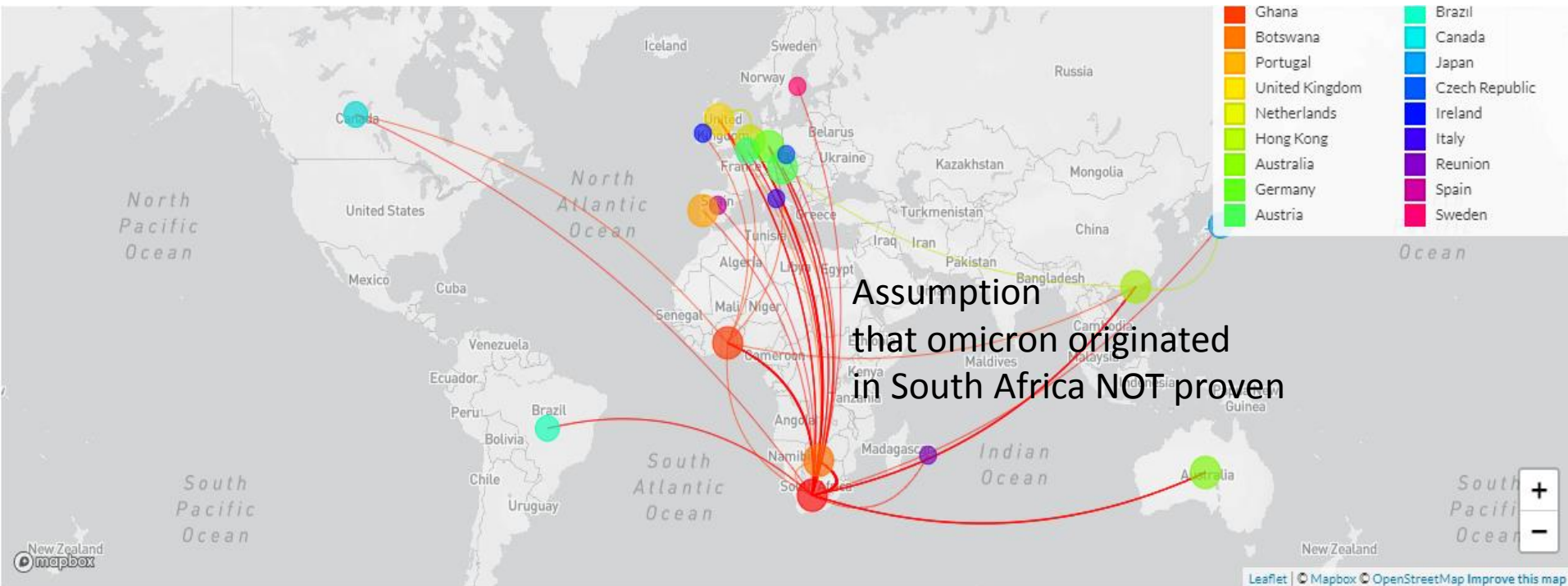
16 confirmed (sequenced) omicron cases in Western Cape.

>80% of PCR specimens in last week have proxy marker of omicron.

Update on omicron (B.1.1.529) globally

371 sequenced cases in 24 countries (as of 1 Dec 2021)

Cases in some countries without travel history or recent contact with travellers suggest possible community transmission



What do we know about omicron?



?Not yet certain

Transmissibility



?Protection against severe disease should be maintained at least partially

Vaccines



Risk of reinfection

Some evidence of ↑
reinfection risk



Disease severity

?No early signal



Diagnostics

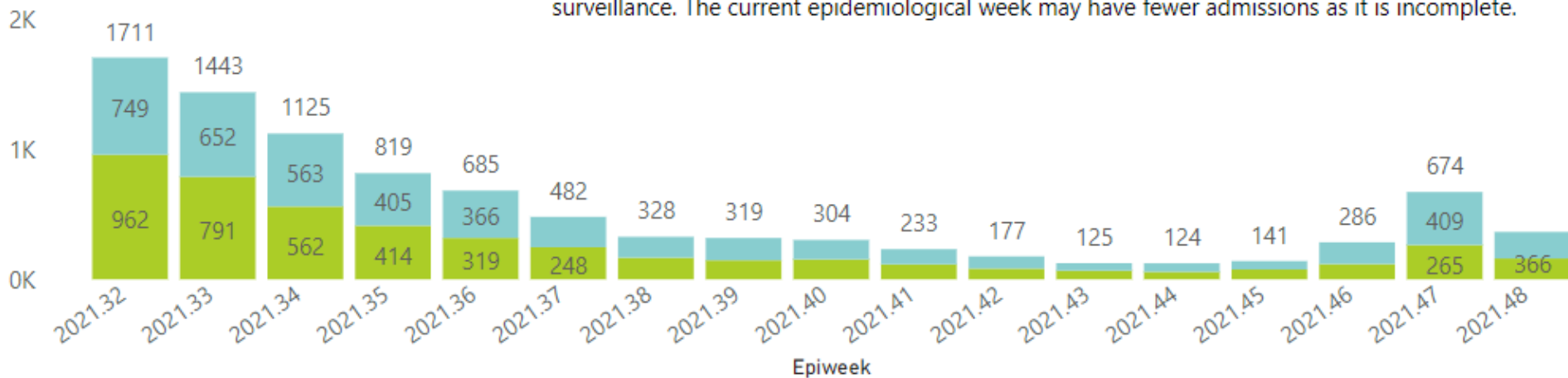
Tests appear to work

Clinical disease severity

Hospital admissions of COVID-19 cases, by health sector, by epidemiological week

Private Public Total: 127.04K

The number of reported admissions may change day-to-day as new facilities enroll in this sentinel surveillance. The current epidemiological week may have fewer admissions as it is incomplete.



- Admission numbers in Gauteng have increased steeply in keeping with case numbers.
- No evidence yet that omicron causes more severe disease.
- Reports of more young people and children being admitted, but this may be due to these groups being less likely to be vaccinated and involved in events where virus was spread.
- Need to watch data carefully to assess.

COVID-19 fourth wave response

Possible 4th wave scenarios (before omicron identified) – currently being revised for omicron impact

Assumptions:

- Seroprevalence, variants, admissions, excess deaths, vaccinations as per data to date.
- Vaccine coverage 70% among adults by March 2022 (vs 42% current)
 - 75% coverage in those 60y+ (vs 64% current).
- Vaccine effectiveness **vs. infection** delta as per published data & wanes.
- Vaccine effectiveness **vs. hospitalisation maintained** for projection window.

Two more severe scenarios



Scenario 1: ↑ contact behaviour post wave 3 with no behavioural response to ↑ infections in a 4th wave.

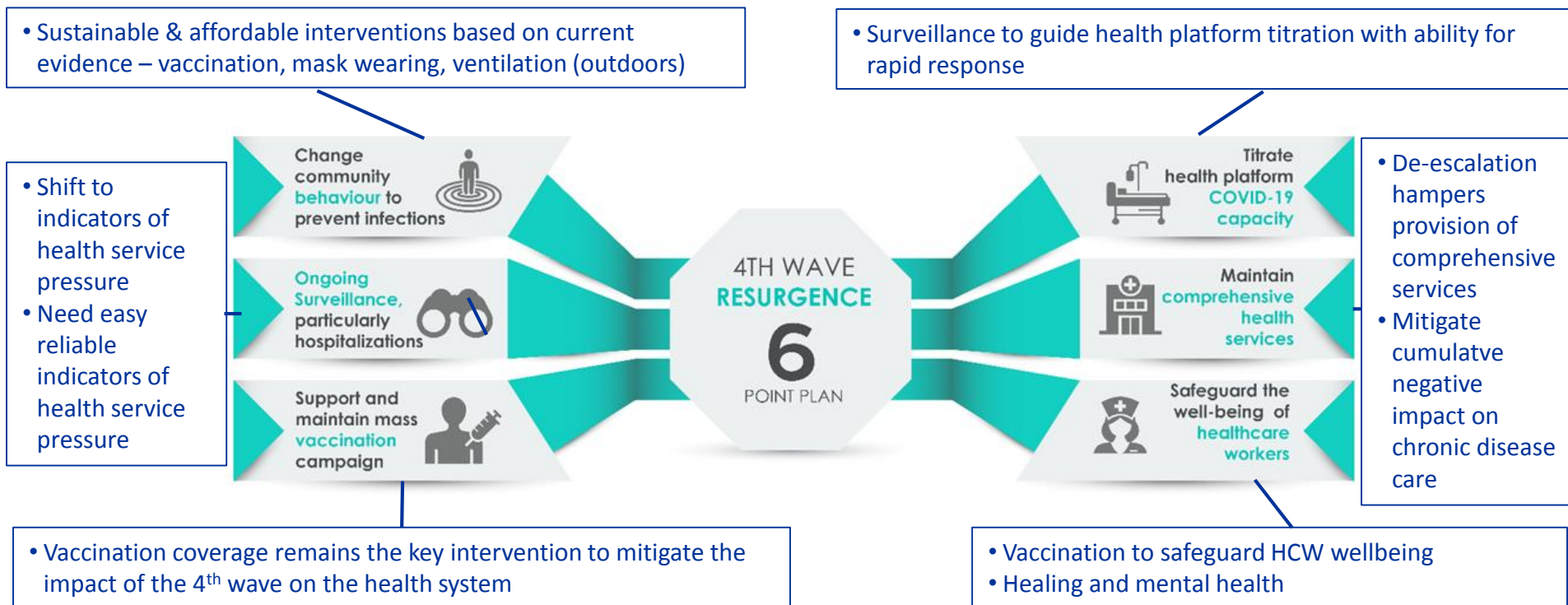


Scenario 2: Variant with 25% immune escape (re-infections)

—Vaccines remain effective against severe disease.









—Limited behavioural response to 4th wave - contacts double number in wave 3

Western Cape 4th wave resurgence plan










Triggered response for the 4th wave

Agile and titrated response with multiple actions in response to predefined triggers

Indicator	Example of Resurgence Metric	Recommended action
First warning: ↑ health service demand in 14-21d	 Large ↑ daily cases (↑ for ≥ 1 week of ≥ 20%) Overall test positivity >7% for ≥1 week  >50% ↑ in pre-COVID-19 O ₂ use for ≥3d	<ul style="list-style-type: none"> Public messaging: ↑ cases & stricter NPI adherence. Publish 2nd warning indicators & restriction expectations if breached. Notify of resource mobilization for a substantial surge. ↑ vaccination & boosters according to national guidelines. Viral sequencing. No restrictions when 1st warning indicator met.
Second warning: ↑ health service demand in 7-14d	 10% week on week ↑ in 7dma of new admissions (<i>for ≥7d & >7/million population (i.e. 50) new daily admissions</i>)  >75% ↑ in pre-COVID-19 O ₂ use for ≥3d	As above PLUS <ul style="list-style-type: none"> Publish 3rd warning indicators & restriction expectations if breached. Mobilize resources to support a substantial surge within 7 to 14 days. Consider limiting testing not absolutely necessary. Consider restrictions
Third warning: ↑ health service demand in 2-7d	 >50% high care, ICU & HFNO ₂ COVID-19 beds occupied  >100% ↑ in pre-COVID-19 O ₂ use for ≥3d	As above PLUS <ul style="list-style-type: none"> Publish potential ↑ of restrictions if systems become overwhelmed. Limit testing not absolutely necessary. Mobilize resources to support substantial surge within 2d. Consider further restrictions
Health service capacity threatened	 >2800 current COVID-19 inpatients >80% high care, ICU & HFNO ₂ COVID-19 beds occupied  >200% ↑ in pre-COVID-19 O ₂ use for ≥3d	As above PLUS <ul style="list-style-type: none"> Mobilize resources to maximum capacity. Further restrictions

Titrating the health platform

– similar response to wave 3 when admission indicators are met

Indicator	Acute hospital general beds 	Critical care/ICU beds 	Intermediate care beds 	Referral pathways 	Ambulance service 	Oxygen 
1st warning: ↑ health service demand in 14- 21d	↑ to 30% of peak wave 2 beds (545 beds) by ↓ non-urgent OPD visits	↑ to 30% of peak wave 2 beds (37 beds) by ↓ elective surgery to 80% of usual capacity	↑ to 50% capacity (min 250 beds)	Equitable spread across hospitals: temporarily shift referral paths to balance patient load across facilities	Use private sector EMS transport as required	Alert O ₂ company to ↑ supply & transport Refill O ₂ tanks every 2nd day/as required
2nd warning: ↑ health service demand in 7-14d	↑ to 60% of peak wave 2 beds (1090 beds) by further ↓ non- urgent OPD visits	↑ to 60% of peak wave 2 beds (75 beds) by ↓ elective surgery to 70% of usual capacity	↑ to 100% capacity (500 beds)	As above	As above	Refill O ₂ tanks daily
3rd warning: ↑ health service demand in 2-7d	↑ to 100% of peak wave 2 beds (1820 beds) by strictly ↓ non- urgent OPD visits	↑ to 100% of peak wave 2 beds (125 beds) by ↓ elective surgery to 60% usual capacity	↑ to >100% of capacity (>500 beds) if possible	Divert patients to private sector hospitals where possible	As above	Refill oxygen tanks daily or twice daily if drop <50% capacity
Health service capacity threatened	<p><i>As above plus</i></p> <p>Continue maximal expansion COVID-19 beds</p> <p>Continue restricting non-urgent OPD services and non-urgent admissions</p> <p>Maintain daily governance structures / huddles to ensure maintenance and equity of the service platform pressures</p> 					

Current status of the health platform

Acute public service platform – current picture

1. The **Metro hospitals** have an average **BOR of 91%**; **George** drainage area hospitals at **61%**; **Paarl** drainage area hospitals at **73%** & **Worcester** drainage area hospitals at **77%**. **Critical care BOR** for designated COVID beds for the province at **13%**.
2. **COVID & PUI cases** currently make up **3%** of all available acute general hospital capacity in both Metro and Rural Regional Hospital drainage areas.
3. **COVID inter-mediate care** – the **Brackengate** Hospital of Hope currently has **7** patients (**2% BOR**), **Sonstraal** currently has **0 clients** ; **Freesia & Ward 99** have **0 patients**. **Mitchell Plain** Hospital of Hope – plans to re-open.
4. The Metro **mass fatality centre** has capacity has now closed.

Daily Operational Bed Status



WCDOH: Daily Operational Bed Status Dashboard as at 01/12/2021

Drainage Area	Filled Beds					BUR % for Designated Covid Beds(General Wards)	BUR % for Designated Covid Beds(Critical Care)
	Operational Beds		BUR %	COVID BUR %	% Covid patients		
Cape Town /Metro	5,065	4,613	91%	6%	2%	6%	19%
George	918	557	61%	3%	1%	3%	5%
Paarl	982	713	73%	9%	4%	10%	
Worcester	741	567	77%	20%	9%	21%	8%
SubTotal WCDOH	7,706	6,450	84%	8%	3%	8%	13%

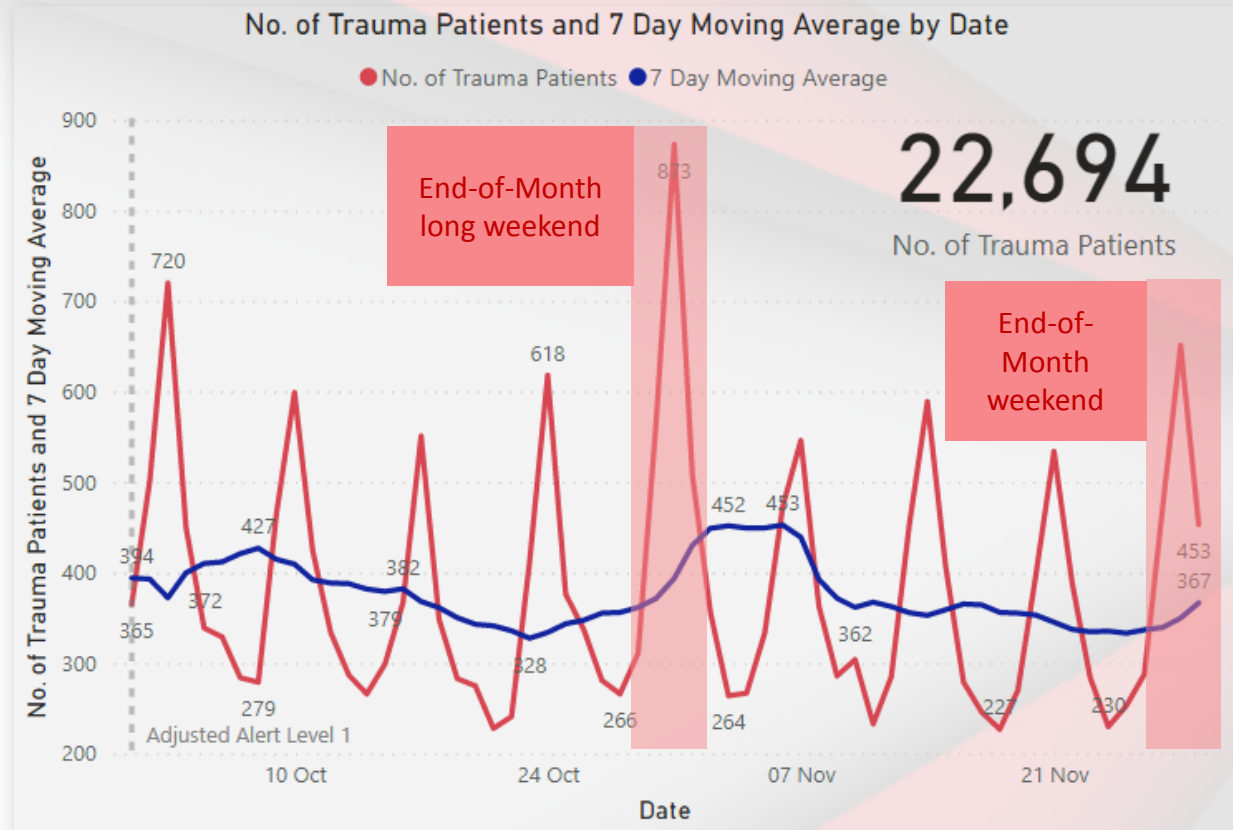
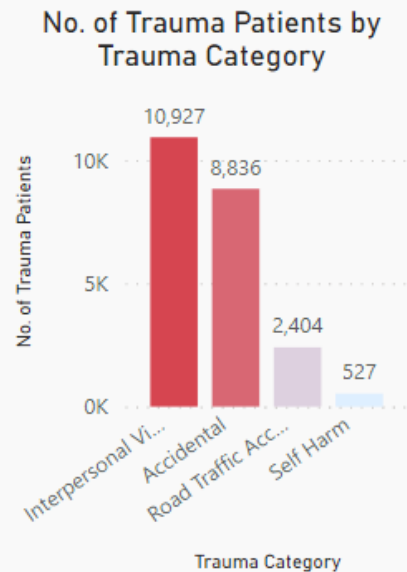
Excluding Specialised Hospitals e.g. Mowbray Maternity, Psychiatric Hospitals, etc

WC Sentinel Trauma Report

Source: **HEC** **IS**

Overview of changes in recent trauma presentations (01 Oct 2021- 29 Nov 2021)

This report shows a sample of 20 hospital emergency centres and their trauma patient numbers over time



Over the last 8 weeks (since the start of Alert Level 1), we have seen a total of **22,694** trauma cases at 20 of our Emergency Centres with ~2943 additional cases over the last week alone.

These trauma presentations continue with a weekend pattern of violence and trauma, and further worsening after a pay-day/end-of-month weekend likely secondary to increased alcohol sales during these periods.

The last end-of-month weekend saw a total of 1410 trauma cases from Friday through to Sunday.

Current COVID-19 Regulation

Date Period	Lockdown Level	Alcohol Regulation	Curfew
>1 Oct 2021	Adjusted Level 1	No restrictions	00:00-04:00

Preparing the People Capacity – 4th Wave

5

Safeguard & protect the well-being of health care workers

Workforce Planning:

- Currently, appointed **863 staff additional for COVID** - contracts extended until end of March 2022 to ensure continued staff capacity on the health platform.
- Appointed **1471 HCW and support staff** which includes **603 interns** for the Vaccination Drive
- A total of **803 applicants** can still be appointed, if needed

COVID: 8 additional appointments

Vaccination Drive:

- 1 new appointment (HCW & Support);
- No new interns appointed

Vaccination Training:

- 6390** registered vaccinators on health platform
- 4292** trained vaccinators to date

2 new registered vaccinators

2 additionally trained vaccinators

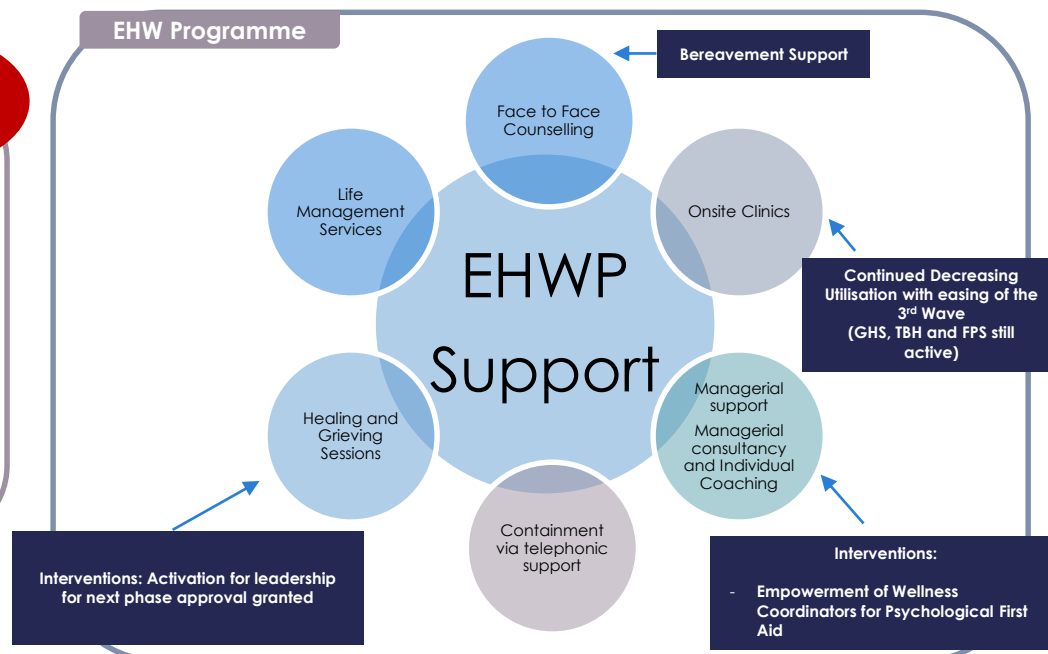
Well-being and Safety:

76,37%
vaccine
coverage

- PPE provision** well managed, stocked and distributed to staff
- Improved OHS Practices:** HIRAs for Metro in November; DoL inspections taking place with improvement reports (no contraventions reported)
- Leave Provisions** are in place to address staff fatigue - **encouraging rest but also Recognition to say Thank You to HCW.**
- Internal Health Comms Series and **Staff Wellbeing to build up resilience** and hope
- Mandatory Vaccination of all HCW** as a key policy position for the Department is being reviewed with expert input.



EHW Programme

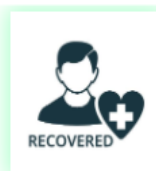


DEPARTMENTAL OVERVIEW OF ONLY COVID-19 CASES AND DEATHS IN HEALTHCARE WORKERS (HCWs)

Totals as at 01 Dec 2021

Cumulative Infections

12,612



12.392

% Recovered

98.26%



192

% Died

1.52%

Active Cases

28

% Active

0.22%

Doctors



1276

Nurse



5,485

Radiographers



151

Pharmacists



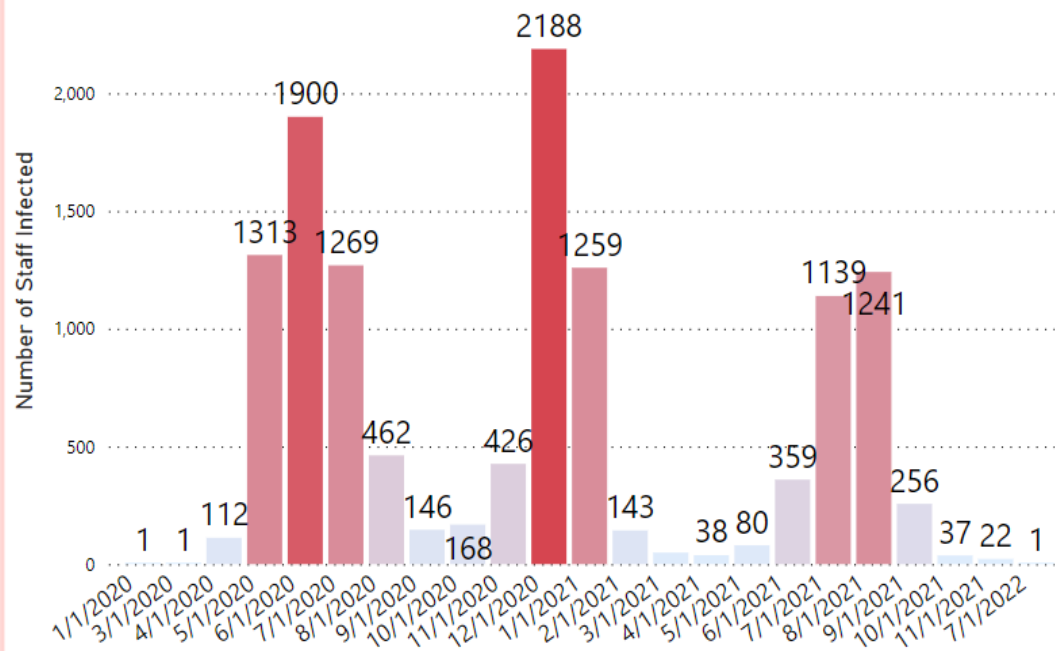
144

Other
categories

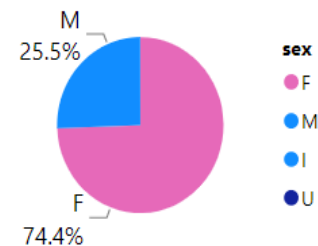


5,556

Total Staff Infected per Month



Gender Distribution



Vaccine Implementation update

Strategic Focus: Adjusting Aim



Promoting Equity

Increase access to registration and vaccination sites

Community-level interventions

Target identified geographic areas



Demand Creation

Retain focus on **>50 years as the most vulnerable** population group

Neutralise misinformation & strengthen pro-vaccine trusted voices

Target **Business, Government & Civil Society** with specific daily targets



Targeted Approach

Focus on **geographic areas** with low vaccine uptake

Maximise reach and efficiencies through **increased outreach** services and **pop-up** sites

Rationalise and retain fixed vaccination sites with high throughput and **where appropriately placed**

Vaccinations as at 01 December 2021 (including 12 – 17 yrs)

National adults
fully vaccinated

14 396 445

**36.17% of adult
pop.**



WC adults fully
vaccinated

2 134 250

**42.88% of adult
pop.**



Vaccinations in the
Western Cape to
date

4 140 609



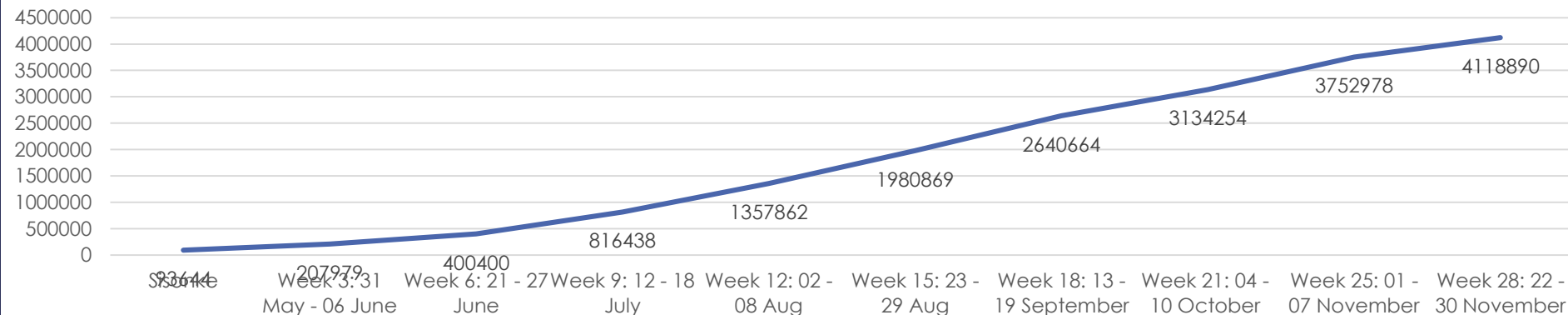
Vaccinations in the
Western Cape- last
24 hours

22 587

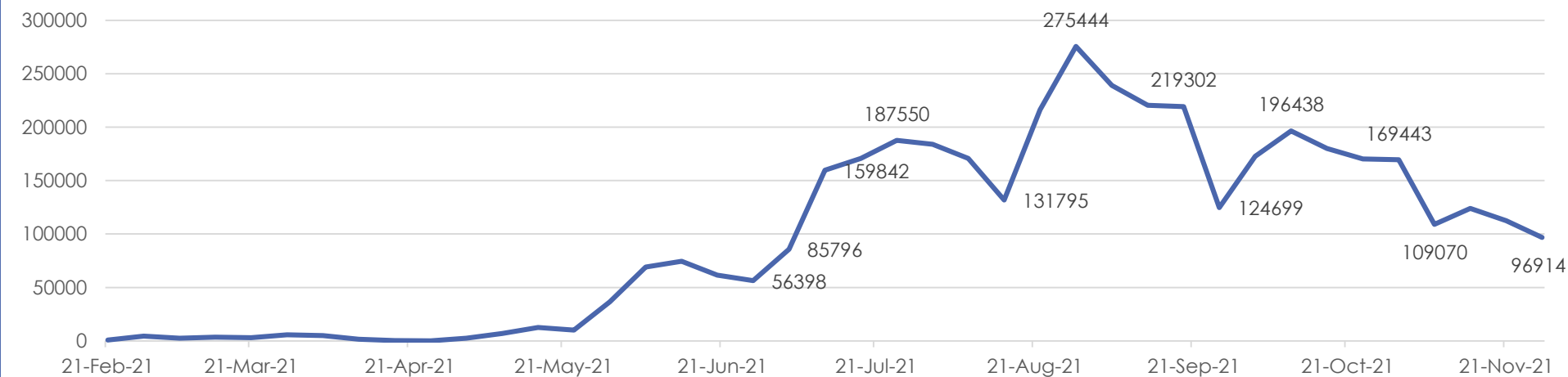


Vaccines Administered

Cumulative Vaccines Administered up to 30 November 2021



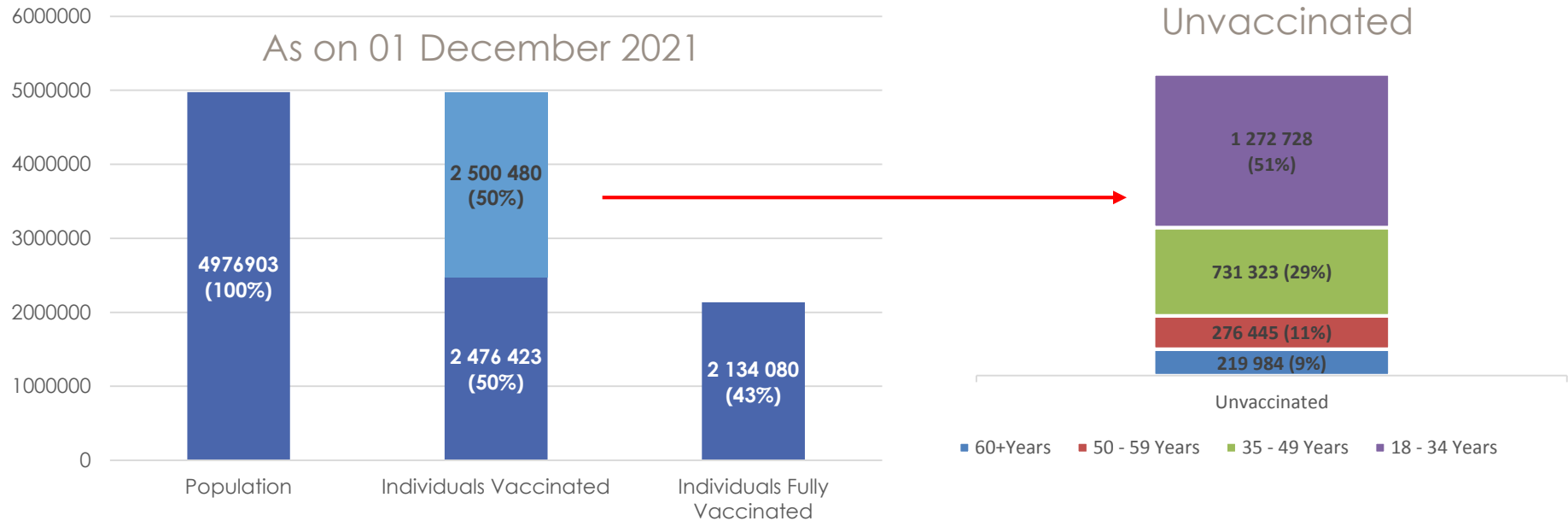
Total Vaccines administered per week



Source: NDoH Dashboard ([Microsoft Power BI](#)) accessed on 01 December 2021 @ 17:00

[Disclaimer: Data displayed in these graphs and tables only contains records captured on EVDS. Totals will be adjusted as back-capturing and data validation is done.]

Current status and the road ahead



As on 01 December 2021:

Total number of individuals (18 Years and older) vaccinated (at least one dose) = **2 467 423 = 50% of >18s**
(EVDS National Dashboard on 01 December 2021)

Total number of individuals (18 Years and older) fully vaccinated = **2 134 080 = 43% of >18s**
(EVDS National Dashboard on 01 December 2021)

Number of unvaccinated persons aged 18 years and older = **2 500 480**

Total number of children (aged 12 – 17 Years) Vaccinated = **65 645 (10%)**

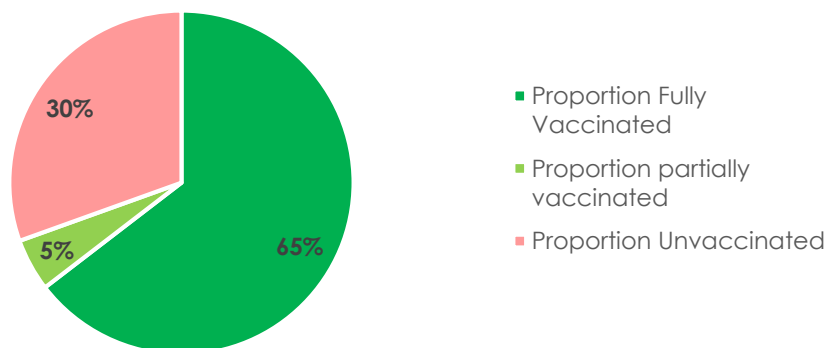
Registration breakdown

As on 01 December 2021, a total of **2 635 886** people in the Western Cape have registered on EVDS, equalling **46.96% of the total eligible population (>12 years)**.

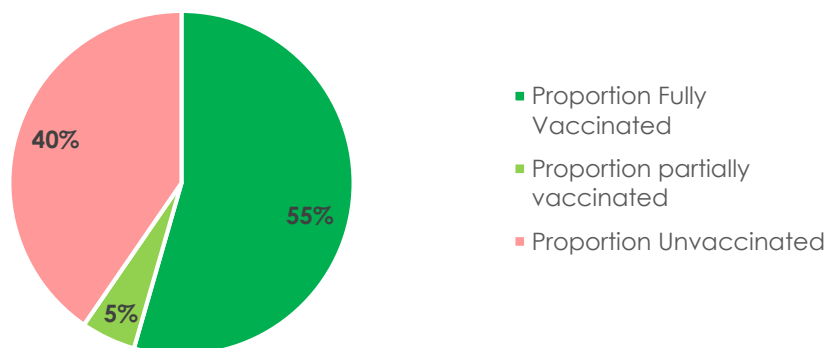
Age Band	Total Registrations	% Individuals Registered	
12 – 17 Years	81 035	12.54%	
18 – 35 Years	830 327	40.47%	
35 – 49 Years	799 984	52.90%	
50 – 59 Years	402 891	59.03%	
60 Years +	521 649	72.48%	
Metro: Sub-district	Proportion >18 years as on 01 December 2021	Rural: District	Proportion >18 years as on 01 December 2021
Eastern	54.38%	Cape Winelands	53.46%
Khayelitsha	33.25%	Central Karoo	41.44%
Klipfontein	49.95%	Garden Route	52.93%
Mitchell's Plain	30.97%	Overberg	61.34%
Northern	54.43%	West Coast	49.91%
Southern	55.21%		
Tygerberg	46.19%		
Western	80.01%		

Vaccinations & Registrations: >50 Years

Vaccinations >60 Years as on
01 December 2021



Vaccinations 50 - 59 Years as on
01 December 2021



Areas of low registration & vaccine uptake

>60 Years:

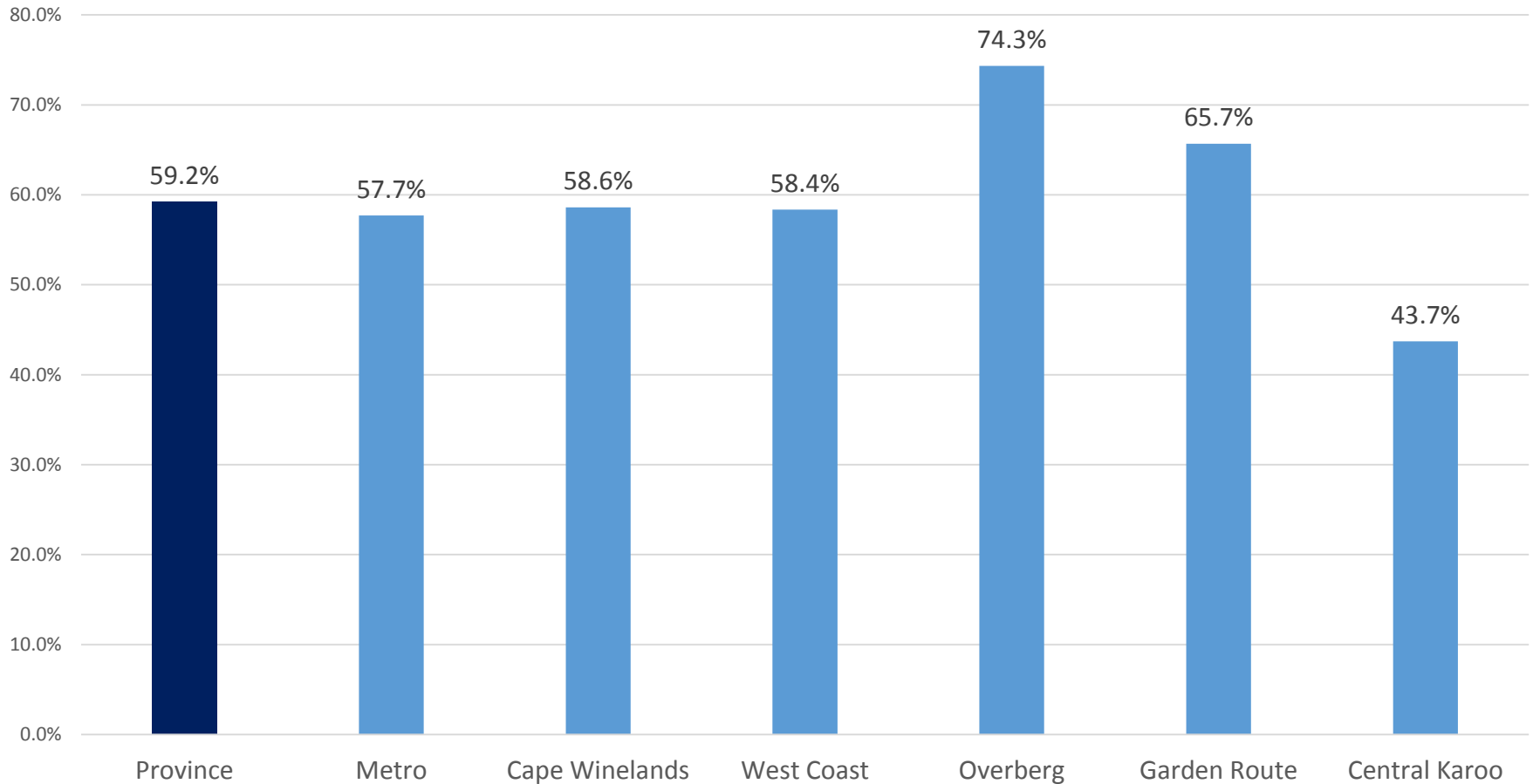
- Central Karoo District
- Khayelitsha Sub-district
- Mitchell's Plain Sub-district

50 – 59 Years

- Central Karoo District
- Khayelitsha Sub-district
- Mitchell's Plain Sub-district
- Tygerberg Sub-district

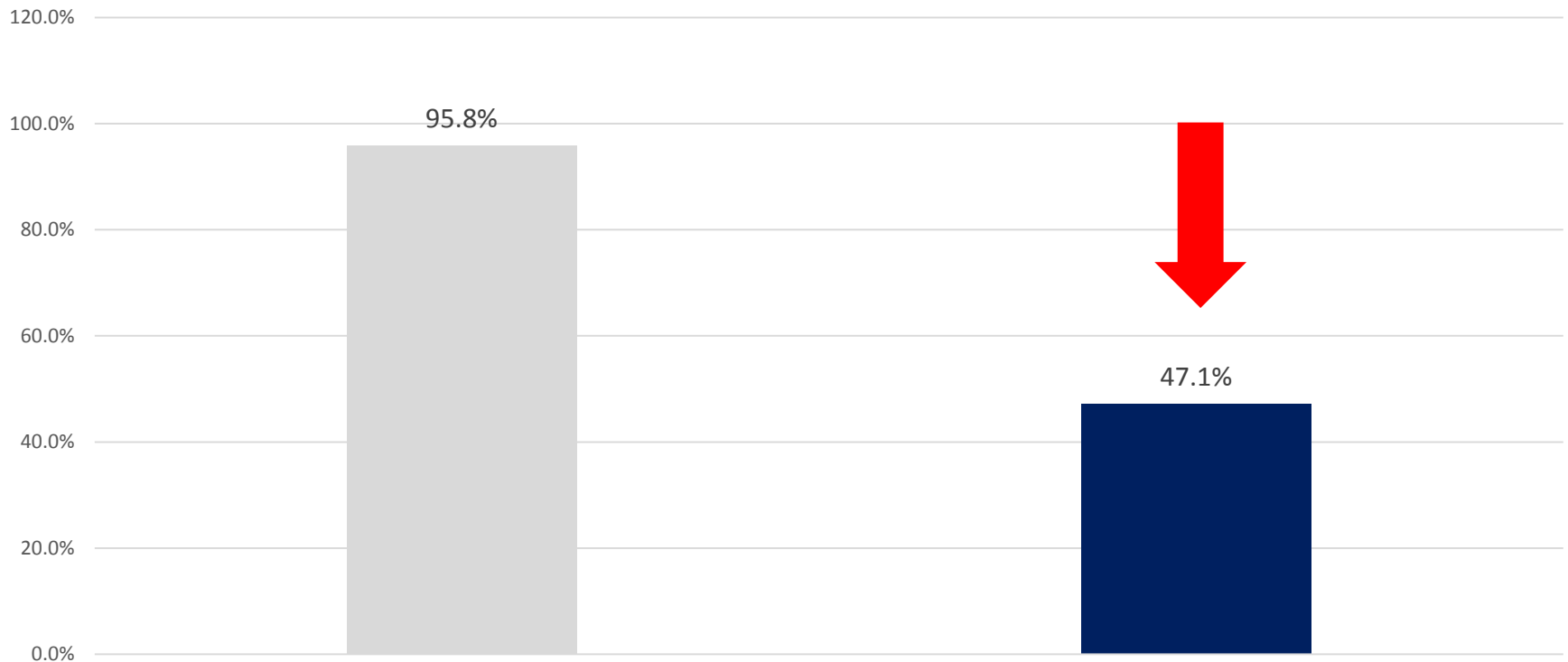
Vaccinations ≥ 50 Fully Vaccinated

WC ≥ 50 fully vaccinated 29 November 2021



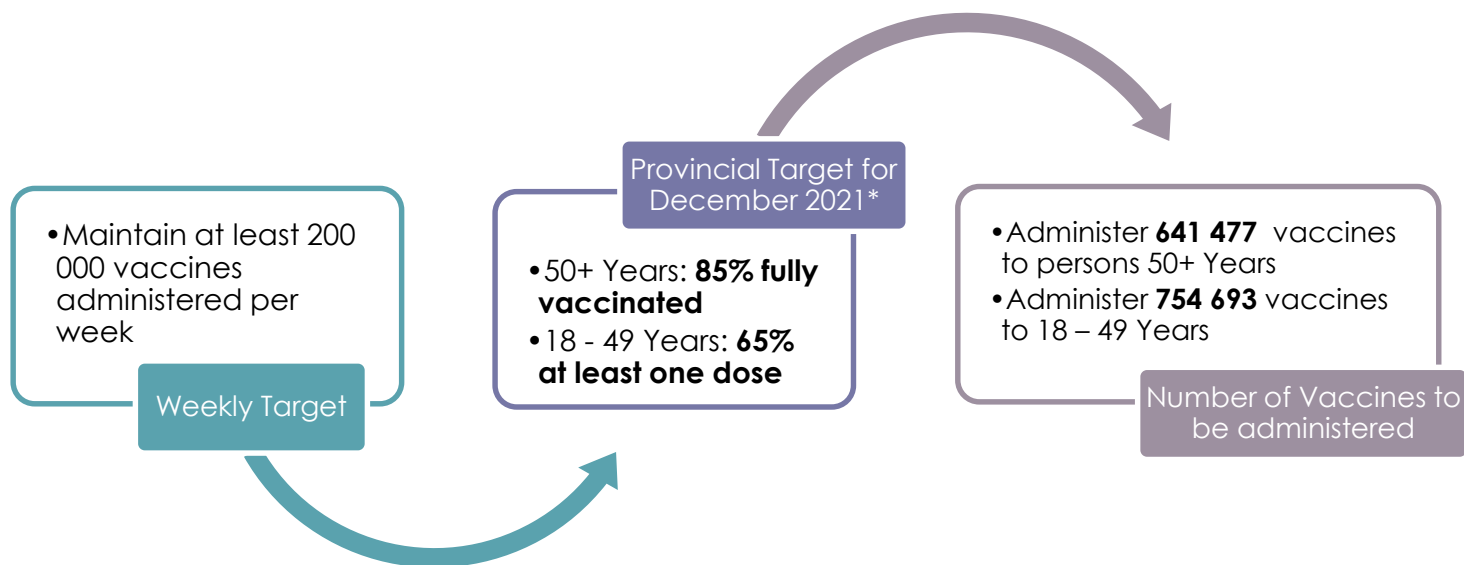
Vaccinations ≥ 50 Fully Vaccinated - Insured vs Uninsured

WC ≥ 50 fully vaccinated
insured vs uninsured_
% of cohort 29 November 2021



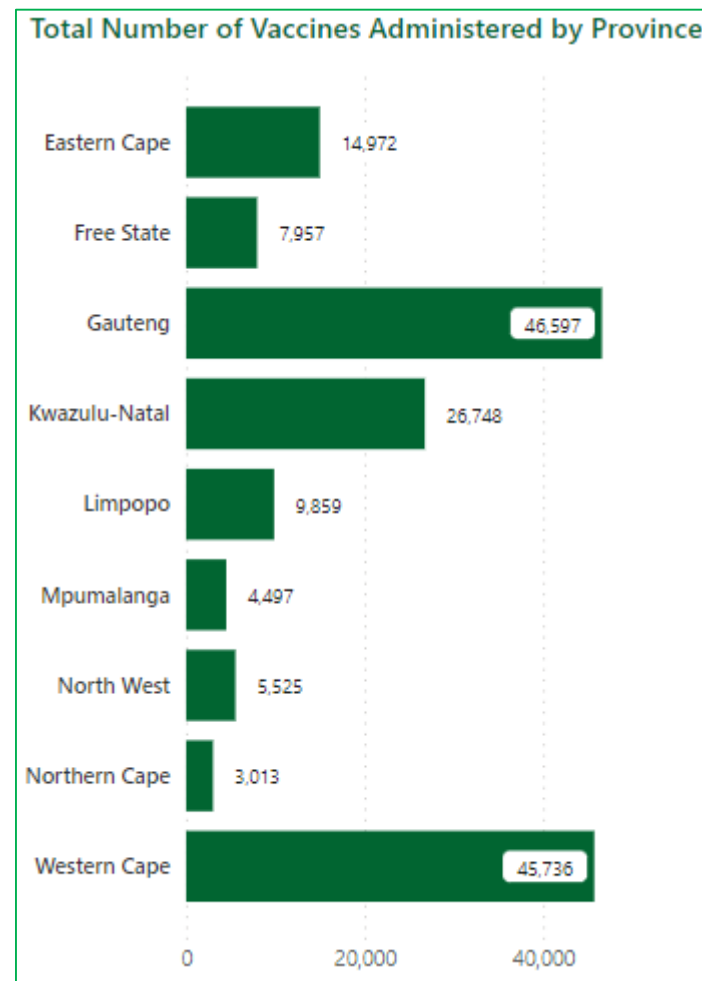
Provincial Targets up to mid-December 2021

Age in years	Total Population	Proportion <u>Fully Vaccinated</u> (Received either 1 dose J&J or 2-dose Pfizer) as on 01 December 2021	Proportion <u>Partially Vaccinated</u> (One dose of two-dose regimen received) as on 01 December 2021	Proportion <u>Unvaccinated</u> as on 01 December 2021
60 Years +	723 160	64.64%	4.94%	30.42%
50 – 59 Years	684 149	54.46%	5.13%	40.41%
50 Years +	1 407 309	59.69%	5.03%	35.28%
35 – 49 Years	1 511 813	45.20%	6.43%	48.73%
18 – 34 Years	2 057 781	29.68%	8.47%	61.85%
18 - 49	3 569 594	36.25%	7.61%	56.14%
18 Years +	4 976 903	42.88%	6.88%	50.24%



Sisonke 2: Booster doses for HCWs (Circular H186 of 2021)

1. The Sisonke 2 programme is being conducted as a **Phase 3b implementation study** and healthcare workers will be required to provide informed consent indicating that they agree to participate in this phase of the study.
2. Implementation commenced on **10 November 2021** at selected vaccination sites.
3. As on 01 December 2021, **45 736** healthcare workers in the Western Cape had received a J&J booster dose.
4. All eligible HCWs who opt out of Sisonke 2 as well as HCWs who were vaccinated with J&J after 17 May 2021, will be able to access a Pfizer booster dose once all necessary approvals have been granted by SAHPRA and NDoH.



Remarks on Vaccine Implementation

- **As a province and a country, we are unlikely to hit the targets we have set, despite having the capacity and the vaccine supply to do so.**
- **The value of the national incentive** (voucher system) for those aged 50 years and older has been increased from R100 to R 200.
- The **primary focus remains** on ensuring that the most **vulnerable groups** are vaccinated (**>50yrs and people >18yrs with co-morbidities**).
- **Booster doses for Immunocompromised clients** will be implemented from 01 December 2021.
- **Ensuring Equity in Access:** Ongoing efforts to remove barriers to access to ensure equitable access.
- **Targeted Mobilisation:** Reaching everyone who has not got around to it yet, as well as everyone who is still unsure or anxious.

Communications



Protection against 4th wave:

Think 4th Wave protection



Go outdoors, get fresh air.

Think protection

1. Vaccinate
2. Wear a mask
3. Fresh air/ventilation
4. Outdoors, no crowding

Think 4th Wave protection



Vaccinate the whole family

Think protection

1. Vaccinate
2. Wear a mask
3. Fresh air/ventilation
4. Outdoors, no crowding

Think 4th Wave protection



Avoid indoor spaces and crowded places.

Think protection

1. Vaccinate
2. Wear a mask
3. Fresh air/ventilation
4. Outdoors, no crowding

Think 4th Wave protection



Travelling? open the windows

Think protection

1. Vaccinate
2. Wear a mask
3. Fresh air/ventilation
4. Outdoors, no crowding

Think 4th Wave protection



Wear a mask

Think protection

1. Vaccinate
2. Wear a mask
3. Fresh air/ventilation
4. Outdoors, no crowding

Bringing vaccinations closer to people – pop-up sites



4th wave risk mitigation: incentivising the vulnerable



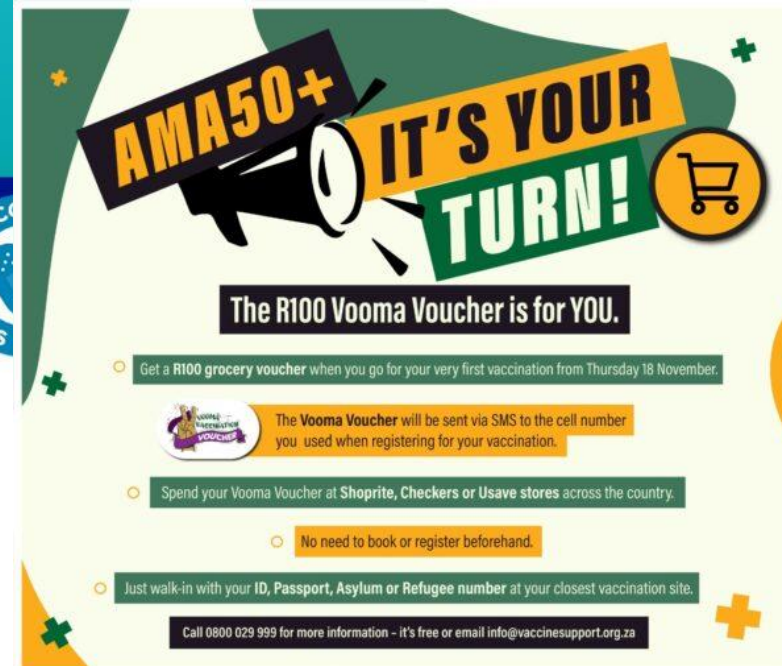
SAVE YOUR SUMMER

If the majority of us are vaccinated with Covid-19 vaccines by December, we will have a much safer summer.

Vaccination is the best way of saving ourselves from illness, death and ongoing disruptions of our lives and work.

- Go for vaccination as a matter of urgency
- Continue to wear a mask (even when vaccinated)
- Ensure open windows, fresh air and good ventilation (even when vaccinated)
- When you have symptoms, stay home

Please call 0860 142 142 for more information on weekly sites or visit our Facebook page <https://www.facebook.com/WCGHealth/>
Also watch local media and municipal pages for details



AMA50+ IT'S YOUR TURN!

The R100 Vooma Voucher is for YOU.

- Get a R100 grocery voucher when you go for your very first vaccination from Thursday 18 November.
- The Vooma Voucher will be sent via SMS to the cell number you used when registering for your vaccination.
- Spend your Vooma Voucher at Shoprite, Checkers or Usave stores across the country.
- No need to book or register beforehand.
- Just walk-in with your ID, Passport, Asylum or Refugee number at your closest vaccination site.

Call 0800 029 999 for more information - it's free or email info@vaccinesupport.org.za

Grocery vouchers extended to 50s



Conclusions

Concluding remarks

1. We **are officially in resurgence** in the **Western Cape** in the context of the **new omicron variant**. We urge everyone to **adhere to protective behaviours, to contain** spread over **the coming days and weeks**, in expectation of a **4th wave**.
2. We have a **tailored step-wise health** and **societal response** and will trigger appropriate responses **to mitigate** the impact of the **imminent 4th wave**.
3. Our biggest weapon **against a big impact of a 4th wave** is **vaccination (especially for >50yr olds)**. We have the capacity to **administer 40 000 vaccines/ day**, but require a massive **whole of society effort** to **generate increased targeted demand**.
4. We need to **focus** our multi-sector **mobilisation efforts** to reach everyone that has **not yet been vaccinated**, in a **targeted and intentional manner, as fast as possible** to in **anticipation of a 4th wave**.

Thank you

K Cloete